

DOCUMENT RESUME

ED 377 927

JC 950 063

TITLE California Community Colleges. Report on Enrollment, 1990-1993.

INSTITUTION California Community Colleges, Sacramento. Office of the Chancellor.

PUB DATE Nov 94

NOTE 107p.

PUB TYPE Statistical Data (110) -- Reports - Descriptive (141)

EDRS PRICE MF01/PC05 Plus Postage.

DESCRIPTORS Community Colleges; \*Enrollment; \*Enrollment Trends; \*Ethnic Groups; \*Full Time Equivalency; Institutional Characteristics; \*School Demography; School Size; \*Student Characteristics; Tables (Data); Two Year Colleges; Two Year College Students

IDENTIFIERS \*California Community Colleges

ABSTRACT

The first in a series of annual reports on community college enrollment in the California Community Colleges (CCC's), this report provides tables and graphs describing CCC enrol'ment between 1990 and 1993 using student data from the Chancellor's Office Management Information System. The first section provides a summary of statewide enrollment statistics and full-time equivalency students (FTES), including data on total enrollment and FTES for 1990-93 and credit/non-credit enrollment for 1970-1993. Section 2 provides statewide summaries of fall enrollments for 1990-93 examined by workload (i.e., full-time, part-time, and non-credit), gender, age, ethnicity (i.e., American Indian, Asian/Pacific Islander, Black, Filipino, Hispanic, and White), enrollment status (i.e., first-time, returning, continuing, transfer, and returning transfer students), and current level of educational attainment (i.e., freshman, sophomore, associate degree, baccalaureate degree, and special admission of a K-12 student). Section 3 presents fall and spring enrollments by college for 1990-93, while section 4 examines 1990-93 fall enrollments by college for the following student characteristics: workload, ethnicity, gender, age, enrollment status, and current level of educational attainment. An appendix provides definitions of variables used in the study. (MAB)

\*\*\*\*\*  
 \* Reproductions supplied by EDRS are the best that can be made \*  
 \* from the original document. \*  
 \*\*\*\*\*

ED 377 927

# REPORT ON ENROLLMENT 1990-1993 CALIFORNIA COMMUNITY COLLEGES

November 1994



Chancellor's Office  
California Community Colleges  
1107 Ninth Street  
Sacramento, California 95814-3607

U.S. DEPARTMENT OF EDUCATION  
Office of Educational Research and Improvement  
EDUCATIONAL RESOURCES INFORMATION  
CENTER (ERIC)

This document has been reproduced as received from the person or organization originating it.  
 Minor changes have been made to improve reproduction quality.

• Points of view or opinions stated in this document do not necessarily represent official OERI position or policy.

"PERMISSION TO REPRODUCE THIS MATERIAL HAS BEEN GRANTED BY

C. McIntyre

TO THE EDUCATIONAL RESOURCES INFORMATION CENTER (ERIC)."

JC 950 063

# **REPORT ON ENROLLMENT 1990-1993 CALIFORNIA COMMUNITY COLLEGES**

*November 1994*

*Prepared by*

**Research and Analysis Unit  
Policy Analysis and Development Division  
Chancellor's Office  
California Community Colleges  
1107 Ninth Street  
Sacramento, California 95814-3607  
(916) 322-4656**

## Table of Contents

Preface: .....	1
 <b>Section 1: Summary of Statewide Enrollment and FTES</b>	
Table 1: Community College Enrollment and FTES, 1990-1993 .....	3
Chart 1: Community College Enrollment and FTES, 1990-1993 .....	3
Table 2: Credit And NonCredit Enrollment, 1970-1993 .....	4
Chart 2: Credit And NonCredit Enrollment, 1970-1993 .....	5
 <b>Section 2: Summary of Fall Enrollment (Statewide)</b>	
Table 3 & Chart 3: By Load .....	7
Table 4 & Chart 4: By Gender .....	8
Table 5 & Chart 5: By Age .....	9
Table 6 & Chart 6: By Ethnicity .....	10
Table 7 & Chart 7: By Status .....	11
Table 8 & Chart 8: By Educational Level .....	12
 <b>Section 3: Enrollment By College, 1990-1993</b>	
Table 9: Fall Enrollment .....	14
Table 10: Spring Enrollment .....	17
 <b>Section 4: Fall Enrollment By College For Student Characteristics</b>	
Table 11: By Load .....	21
Table 12: By Ethnicity .....	27
Table 13: By Gender .....	45
Table 14: By Age .....	55
Table 15: By Enrollment Status .....	73
Table 16: By Educational Level .....	87
 Appendix A: .....	 103

## Preface

This is the first in a series of annual reports on community college enrollment. The data for this report were taken from the student file in the Chancellor's Office Management Information System (MIS). This represents a major effort by staff to provide comprehensive information on district and college students from the reporting system that began in 1990.

A report of this magnitude relies upon the work of community college district personnel who submit unit record data on more than 1.3 million students each term. Our appreciation is extended not only to those individuals, but also to staff in the Chancellor's Office MIS division who provided the basic work files from which this report was prepared.

Chuen-Rong Chan, Specialist in the Chancellor's Office Research and Analysis Unit, analyzed and edited data, organized the structure and format of this report, and developed the various computer programs used to produce the report's tables and graphs.

This report is designed for those individuals at the state and local levels who use data on community college students for planning and analytical purposes. We welcome your comments and suggestions on ways in which the data may be more usefully displayed. These and questions regarding the data may be directed to the Research and Analysis Unit by phone at (916) 322-4656, FAX at (916) 327-5889, or by E-Mail at CCHAN@CC1.CCCCO.EDU.

Charles McIntyre, *Director*  
Research and Analysis Unit

November 1994

**SECTION 1**  
**SUMMARY OF STATEWIDE ENROLLMENT AND FTES**

**Table 1**  
**Community College Total Enrollment and FTES**  
**1990-91 to 1993-94**

YEAR	ENROLLMENT	%CHANGE	FTES	%CHANGE
1990-1991				
Fall	1505381	3.9%		
Annual			925139	5.6%
Spring	1502112			
1991-1992				
Fall	1515261	0.7%		
Annual			952654	3.0%
Spring	1513211	0.7%		
1992-1993				
Fall	1500393	-1.0%		
Annual			926854	-2.7%
Spring	1422086	-6.0%		
1993-1994				
Fall	1376565	-8.3%		
Annual			888667	-4.1%
Spring	1349565	-5.1%		

**Chart 1**  
**California Community College Total Enrollment and FTES**  
**1990-91 to 1993-94**

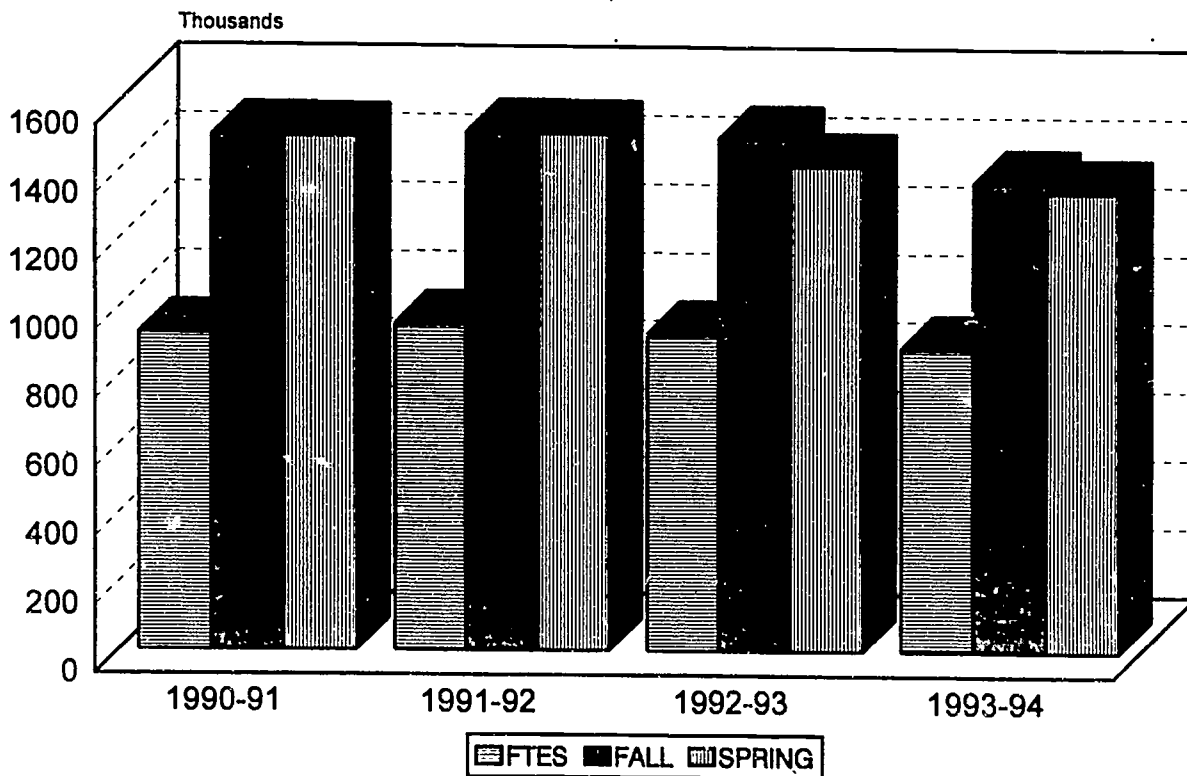


Table 2  
Trends in Headcount Enrollment  
(In thousands)

Year	Total Enrollment		Credit Enrollment		Noncredit Enrollment	
	N	% Change	N	% Change	N	% Change
1970	825		652		173	
1971	837	1.5	695	6.6	142	-17.9
1972	922	10.2	725	4.3	197	38.7
1973	1009	9.4	853	17.7	156	-20.8
1974	1136	12.6	959	12.4	177	13.5
1975	1285	13.1	1104	15.1	181	2.3
1976	1256	-2.3	1075	-2.6	181	0.0
1977	1322	5.3	1118	4.0	204	12.7
1978	1160	-12.3	1049	-6.2	111	-45.6
1979	1248	7.6	1101	5.0	147	32.4
1980	1384	10.9	1190	8.1	194	32.0
1981	1431	3.4	1254	5.4	177	-8.8
1982	1352	-5.5	1188	-5.3	164	-7.3
1983	1248	-7.7	1085	-8.7	163	-0.6
1984	1173	-6.0	1005	-7.4	168	3.1
1986	1174	0.1	1004	-0.1	170	-1.2
1986	1225	4.3	1057	5.3	168	12.5
1987	1284	4.8	1095	3.6	189	8.5
1988	1336	4.0	1131	3.3	205	3.9
1989	1408	5.4	1195	5.7	213	2.3
1990	1505	6.9	1288	7.8	217	1.9
1991	1515	0.7	1314	2.0	201	-7.4
1992	1500	-1.0	1302	-0.9	198	-1.5
1993	1377	-8.2	1186	-9.0	191	-3.5



Chart 2  
Community College Credit And Noncredit Enrollment  
1970-1993

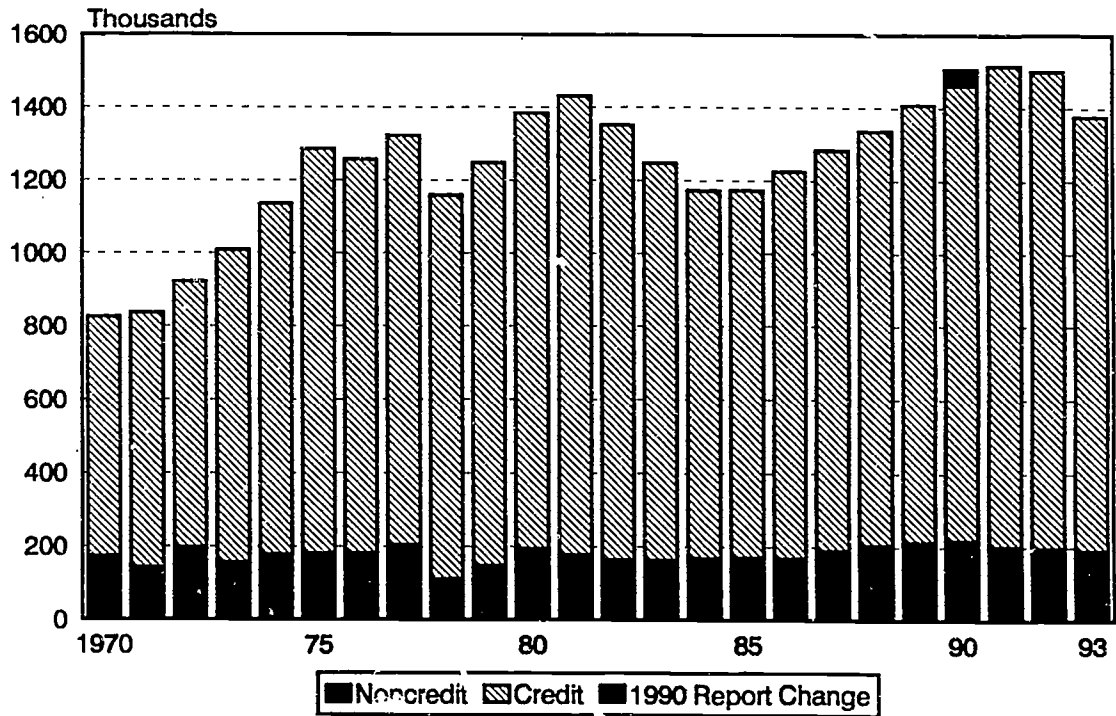
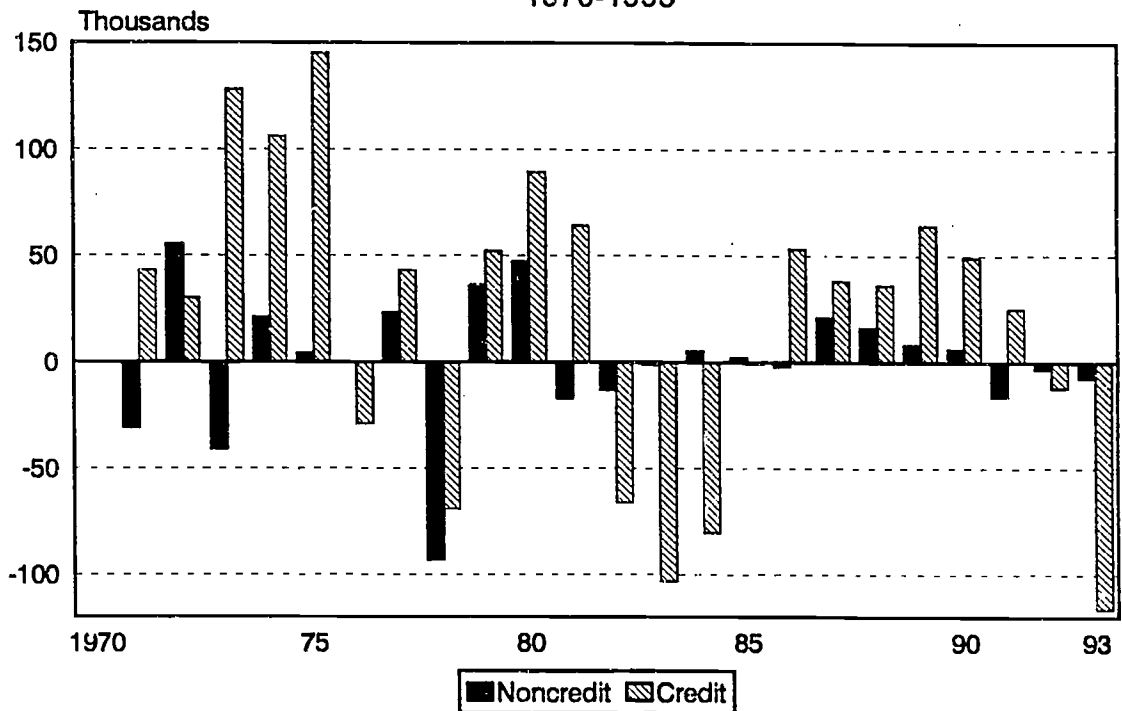


Chart 2  
Community College Credit And Noncredit Enrollment Change  
1970-1993



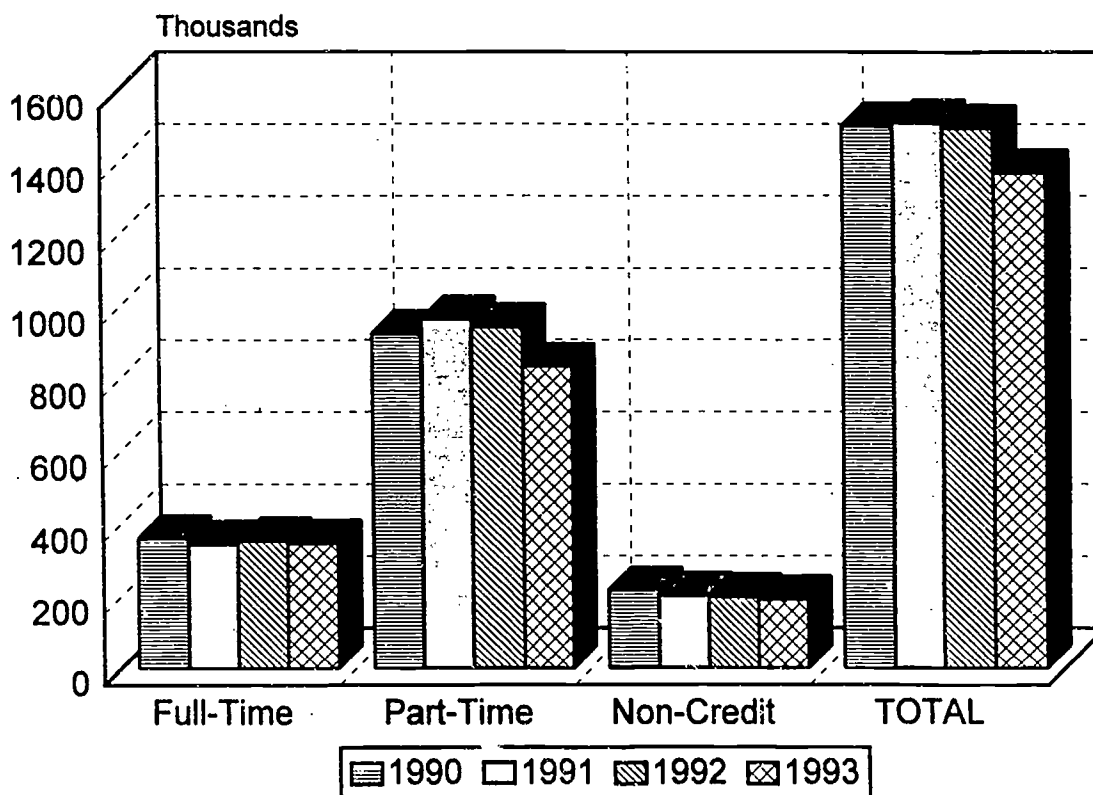
**SECTION 2**

**SUMMARY OF STATEWIDE FALL ENROLLMENT, 1990-1993**

**Table 3**  
**Fall Enrollment by Load**  
**1990-1993**

LOAD	1990	1991	1992	1993	%Chg 90-93
<b>Full-Time</b>	360860	345461	354797	347689	-3.7%
% of Known	24.0%	22.8%	23.6%	25.3%	
<b>Part-Time</b>	927864	968816	947672	838199	-9.7%
% of Known	61.6%	63.9%	63.2%	60.9%	
<b>Non-Credit</b>	216657	200984	197924	190677	-12.0%
% of Known	14.4%	13.3%	13.2%	13.8%	
Unkn	0	0	0	0	
<b>TOTAL</b>	<b>1505381</b>	<b>1515261</b>	<b>1500393</b>	<b>1376565</b>	<b>-8.6%</b>

**Chart 3**  
**Fall Enrollment by Load**  
**1990-1993**

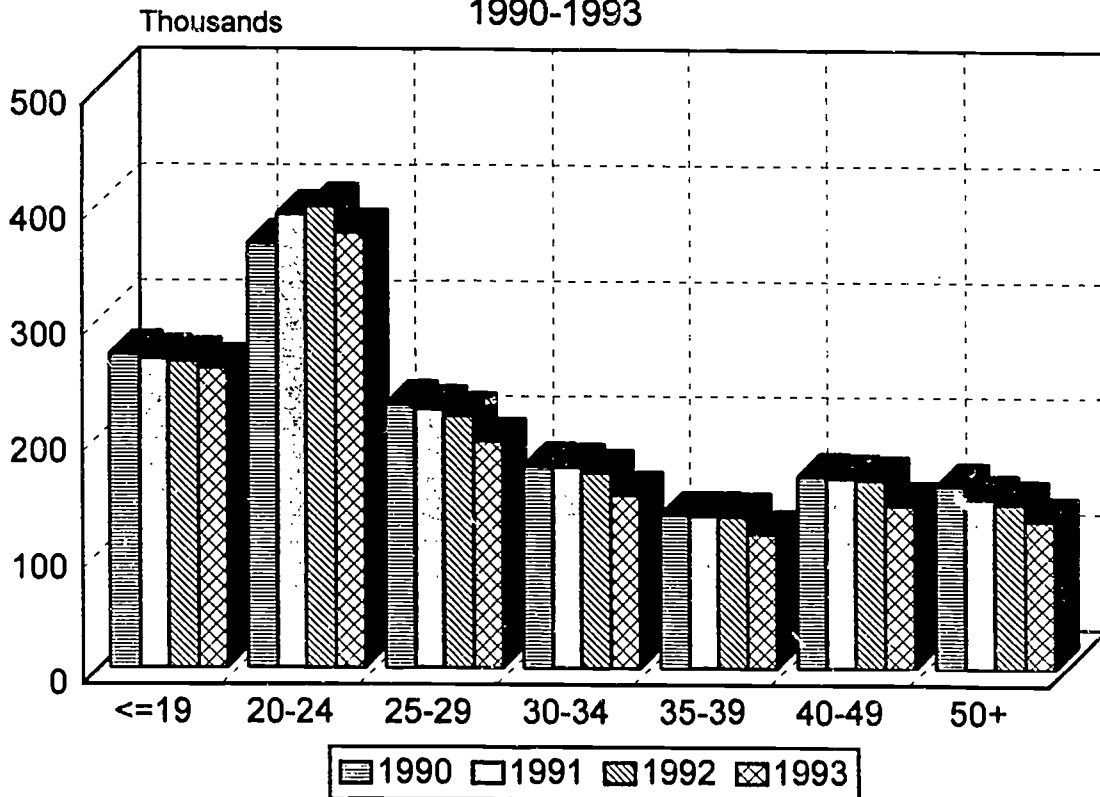


Source: Chancellor's Office, October 15, 1994

Table 4  
Fall Enrollment By Age  
1990-1993

AGE	1990	1991	1992	1993	%Chg 90-93
<=19	270220	266566	264566	258638	-4.3%
% of Known	18.1%	17.8%	17.8%	18.9%	
20-24	366902	392030	398640	376577	2.6%
% of Known	24.5%	26.1%	26.8%	27.6%	
25-29	227412	223449	217744	195689	-13.9%
% of Known	15.2%	14.9%	14.6%	14.3%	
30-34	174579	173703	168749	149729	-14.2%
% of Known	11.7%	11.6%	11.3%	11.0%	
35-39	132554	132225	131246	116350	-12.2%
% of Known	8.9%	8.8%	8.8%	8.5%	
40-49	165996	164388	163102	141478	-14.8%
% of Known	11.1%	11.0%	11.0%	10.4%	
50+	157812	147602	142853	128335	-18.7%
% of Known	10.6%	9.8%	9.6%	9.4%	
Unkn	9906	15298	13493	9769	
TOTAL	1505381	1515261	1500393	1376565	

Chart 4  
Fall Enrollment by Age  
1990-1993

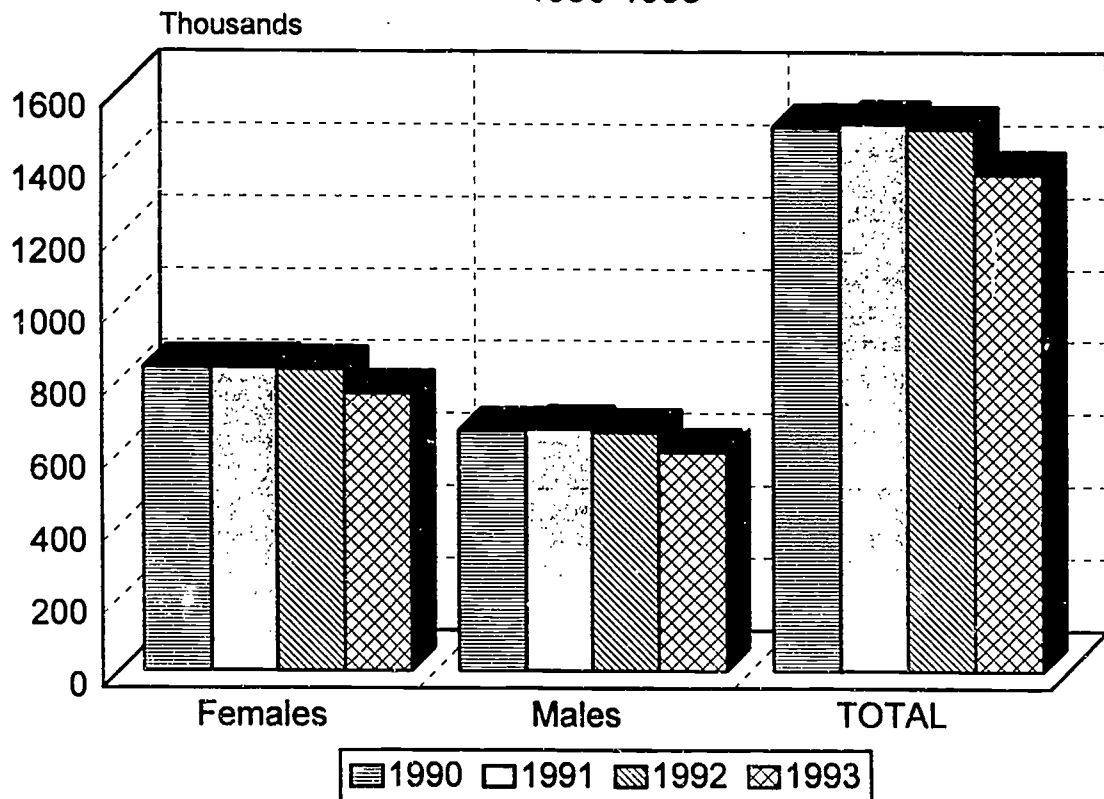


Source: Chancellor's Office, October 15, 1994

**Table 5**  
**Fall Enrollment by Gender**  
**1990-1993**

GENDER	1990	1991	1992	1993	%Chg 90-93
<b>Females</b>	836088	836911	832055	765685	-8.4%
% of Known	55.8%	55.6%	55.8%	55.9%	
<b>Males</b>	662746	667848	658037	603998	-8.9%
% of Known	44.2%	44.4%	44.2%	44.1%	
Unkn	6547	10502	10301	6882	
<b>TOTAL</b>	<b>1505381</b>	<b>1515261</b>	<b>1500393</b>	<b>1376565</b>	

**Chart 5**  
**Fall Enrollment By Gender**  
**1990-1993**

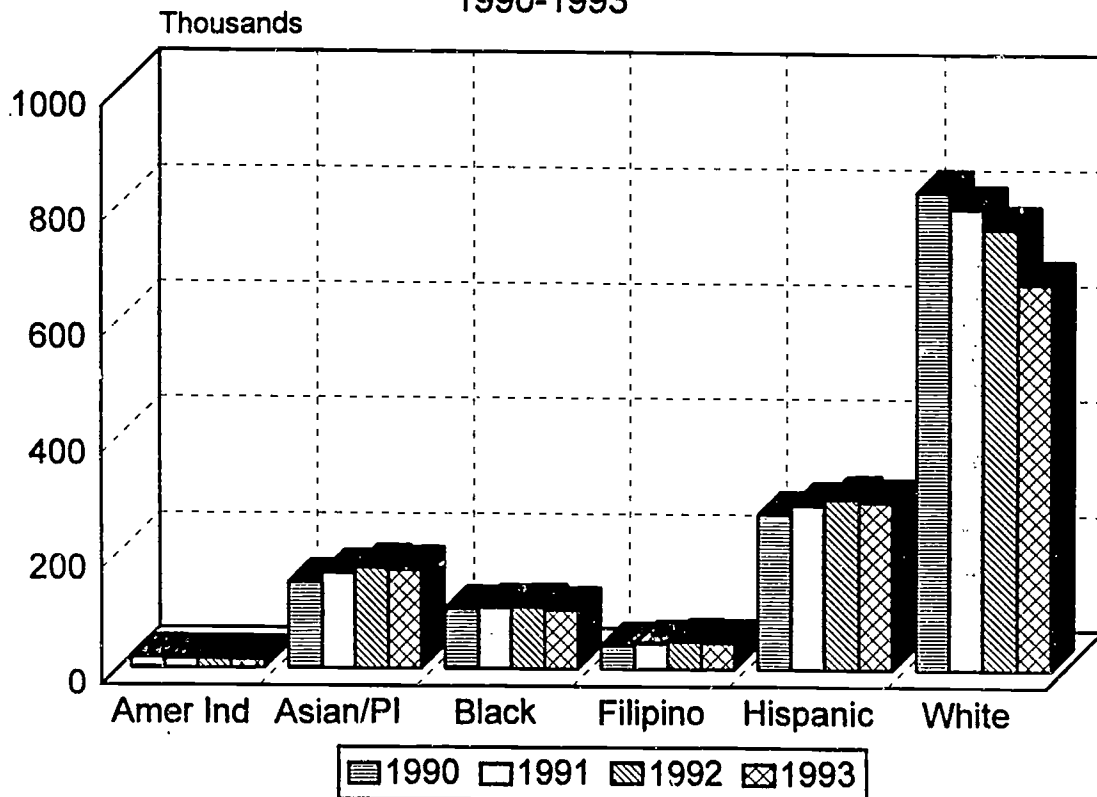


Source: Chancellor's Office, October 15, 1994

**Table 6**  
**Fall Enrollment by Ethnicity**  
**1990-1993**

ETHNICITY	1990	1991	1992	1993	%Chg 90-93
<b>Amer Ind</b>	17508	16882	16722	15470	-11.6%
% of Known	1.2%	1.2%	1.2%	1.2%	
<b>Asian/PI</b>	149306	165471	175049	171633	15.0%
% of Known	10.6%	11.6%	12.4%	13.2%	
<b>Black</b>	103746	106492	107292	101863	-1.8%
% of Known	7.4%	7.5%	7.6%	7.9%	
<b>Filipino</b>	40289	44763	47759	45696	13.4%
% of Known	2.9%	3.2%	3.4%	3.5%	
<b>Hispanic</b>	269886	286422	297387	291739	8.1%
% of Known	19.1%	20.1%	21.1%	22.5%	
<b>White</b>	829486	802403	767107	671873	-19.0%
% of Known	58.8%	56.4%	54.4%	51.8%	
Unkn	73305	72630	68328	57479	
<b>TOTAL</b>	<b>1505381</b>	<b>1515261</b>	<b>1500393</b>	<b>1376565</b>	

**Chart 6**  
**Fall Enrollment by Ethnicity**  
**1990-1993**

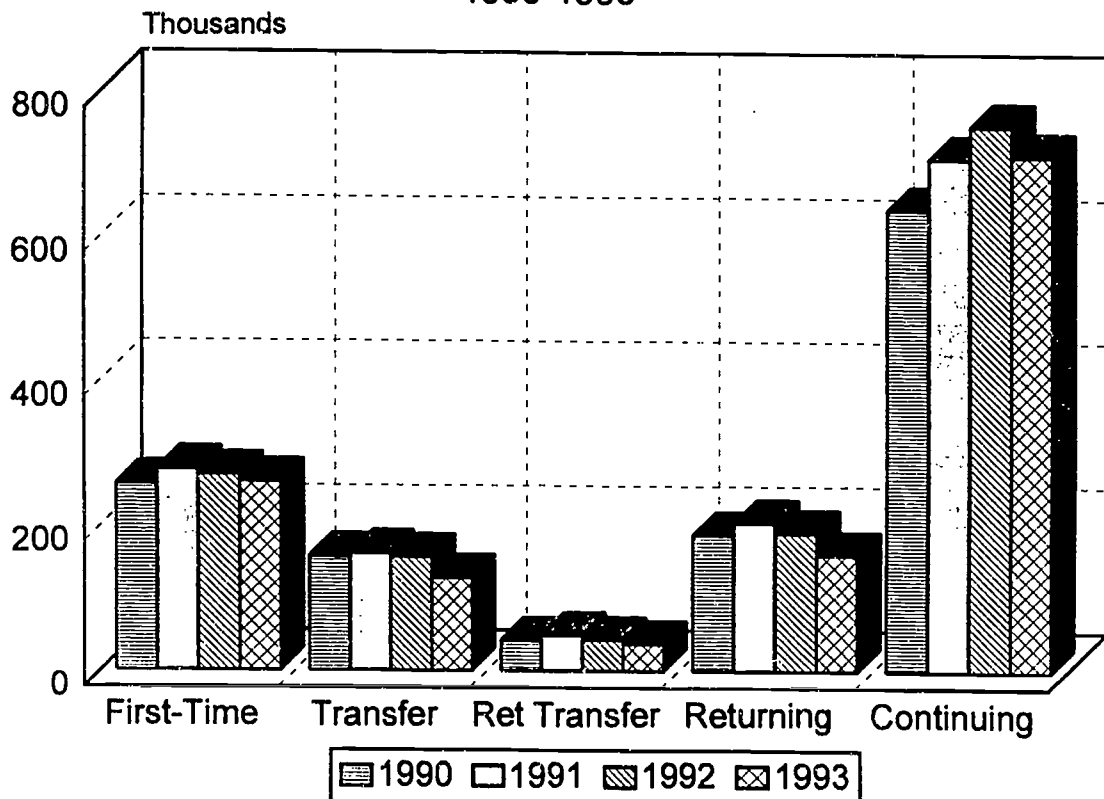


Source: Chancellor's Office, October 15, 1994

**Table 7**  
**Fall Enrollment By Status**  
**1990-1993**

STATUS	1990	1991	1992	1993	%Chg 90-93
<b>First-Time</b>	237391	277549	269813	261007	9.9%
% of Known	18.8%	19.7%	19.0%	20.0%	
<b>Transfer</b>	157725	162134	157049	128611	-18.5%
% of Known	12.5%	11.5%	11.1%	9.9%	
<b>Ret Transfer</b>	41774	49161	42486	37470	-10.3%
% of Known	3.3%	3.5%	3.0%	2.9%	
<b>Returning</b>	188432	205497	191284	161275	-14.4%
% of Known	14.9%	14.6%	13.5%	12.4%	
<b>Continuing</b>	640575	711151	756054	714878	11.6%
% of Known	50.6%	50.6%	53.4%	54.9%	
<b>Unkn</b>	239484	109769	83707	73324	
<b>TOTAL</b>	1505381	1515261	1500393	1376565	

**Chart 7**  
**Fall Enrollment By Status**  
**1990-1993**

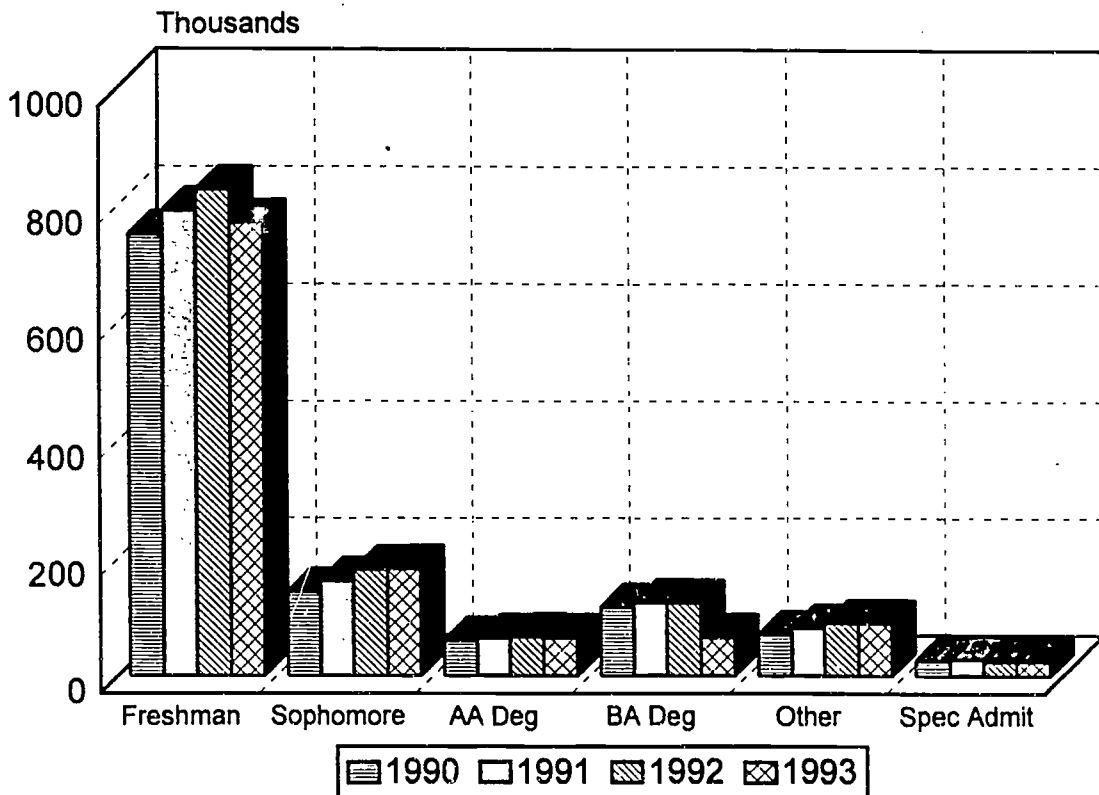


Source: Chancellor's Office, October 15, 1994

**Table 8**  
**Fall Enrollment By Educational Level**  
**1990-1993**

EDUC	1990	1991	1992	1993	%Chg 90-93
<b>Freshman</b>	753617	794904	830305	773746	2.7%
% of Known	64.2%	63.1%	62.9%	64.3%	
<b>Sophomore</b>	144066	163274	182197	182997	27.0%
% of Known	12.3%	13.0%	13.8%	15.2%	
<b>AA Degree</b>	60735	65252	66992	65416	7.7%
% of Known	5.2%	5.2%	5.1%	5.4%	
<b>BA Degree</b>	116950	125277	124671	65798	-43.7%
% of Known	10.0%	9.9%	9.4%	5.5%	
<b>Other</b>	70931	82000	90167	90393	27.4%
% of Known	6.0%	6.5%	6.8%	7.5%	
<b>Spec Admit</b>	27080	28880	25315	25206	-6.9%
% of Known	2.3%	2.3%	1.9%	2.1%	
Unkn	332002	255674	180746	173009	
<b>TOTAL</b>	<b>1505381</b>	<b>1515261</b>	<b>1500393</b>	<b>1376565</b>	

**Chart 8**  
**Fall Enrollment By Educational Level**  
**1990-1993**



Source: Chancellor's Office, October 15, 1994



**SECTION 3**  
**ENROLLMENT BY COLLEGE, 1990-1993**

Table 9: Fall Enrollment

College/Center	1990	1991	1992	1993
Alameda	6,125	6,178	5,968	5,658
Allan Hancock	13,353	13,531	15,926	15,395
American River	24,214	23,192	23,162	21,824
Antelope	10,084	10,229	10,845	9,730
Bakersfield	13,810	13,171	13,680	13,294
Barstow	2,958	3,979	3,300	2,517
Butte	13,202	12,181	11,907	11,313
Cabrillo	12,504	.	13,480	12,328
Canada	7,315	7,612	6,804	5,667
Canyons	6,502	6,533	6,670	6,486
Cerritos	21,106	21,598	22,750	20,889
Cerro Coso	5,026	5,162	5,277	4,854
Chabot	.	15,338	14,939	14,179
Chaffey	13,924	14,759	16,163	14,970
Citrus	11,547	11,763	13,663	11,232
Coastline	15,439	15,271	12,053	12,953
Columbia	3,364	3,406	3,381	2,353
Compton	5,069	5,667	5,696	4,559
Contra Costa	8,837	8,837	9,425	8,454
Cosumnes River	11,711	12,304	12,000	11,812
Crafton Hills	6,352	6,549	5,048	4,948
Cuesta	7,922	7,792	8,155	7,408
Cuyamaca	4,629	5,134	5,099	4,591
Cypress	14,162	14,388	14,681	13,891
De Anza	28,039	25,850	25,002	24,271
Desert	10,912	11,487	10,975	9,549
Diablo Valley	22,872	23,549	23,398	20,783
El Camino	26,920	25,501	25,321	23,724
Evergreen	10,530	11,592	11,595	9,843
Feather River	1,314	1,419	1,264	1,043
Foothill	21,322	16,194	15,465	15,013
Fresno	.	19,334	19,334	17,999
Fullerton	20,119	20,130	20,901	18,781
Gavilan	4,594	4,254	1,731	4,154
Glendale	19,523	20,034	20,153	18,892
Golden West	15,411	15,672	15,308	13,969
Grossmont	17,840	17,728	16,780	15,197
Hartnell	10,446	10,387	11,835	6,765
Imperial Valley	.	2,654	6,399	6,445
Irvine Valley	9,518	10,819	10,329	9,875
Kings River	.	5,227	6,190	6,222
LA City	17,653	17,740	17,666	15,873
LA East	16,439	15,382	15,759	14,738
LA Harbor	10,201	10,326	10,404	8,323
LA ITV	380	518	676	462
LA Mission	7,463	8,386	8,170	6,429
LA Pierce	19,860	19,529	18,933	15,865
LA Southwest	6,945	7,299	6,123	5,831
LA Trade Tech	14,405	15,055	14,511	13,304
LA Valley	18,931	19,615	19,520	17,389
LA West	10,408	10,212	9,244	7,823
Lake Tahoe	2,402	2,746	2,706	2,441
Laney	10,468	11,647	11,581	11,137

Table 9: Fall Enrollment

College/Center	1990	1991	1992	1993
Las Positas	.	5,904	5,658	5,535
Lassen	3,442	3,541	3,359	2,788
Long Beach	27,919	24,913	23,284	22,310
Los Medanos	9,318	8,888	8,539	7,481
Marin	.	9,920	10,577	9,225
Marin CED	.	3,072	2,620	3,190
Mendocino	4,804	4,914	4,792	3,491
Merced	11,025	11,553	11,209	10,521
Merritt	6,671	7,017	6,492	5,489
Mira Costa	14,948	13,572	13,688	12,987
Mission	11,122	12,468	12,102	10,655
Modesto	13,469	16,266	16,399	15,480
Monterey Peninsula	.	6,372	9,578	8,560
Moorpark	11,743	11,931	12,060	10,992
Mt San Antonio	35,434	33,080	31,149	29,510
Mt. San Jacinto	7,948	8,162	8,225	7,908
Napa	.	7,791	7,933	7,605
North Orange Adult	28,115	25,272	24,986	19,670
Ohlone	8,963	10,273	10,094	8,695
Orange Coast	26,201	26,258	24,965	22,943
Oxnard	6,634	6,176	6,578	5,486
Palo Verde	1,142	1,213	1,903	1,858
Palomar	20,788	22,607	25,229	23,927
Pasadena	18,104	29,618	29,168	24,457
Porterville	3,909	3,156	3,218	3,032
Rancho Santiago	30,204	33,678	31,262	27,371
Rancho Santiago CED	19,920	18,933	17,938	18,687
Redwoods	8,830	8,159	7,820	7,157
Rio Hondo	16,205	12,759	13,228	14,839
Riverside	20,736	21,813	22,662	21,075
SF Center	37,771	34,589	33,841	31,870
SF City	29,771	30,155	30,290	27,674
Sacramento City	19,558	18,905	18,719	18,657
Saddleback	23,858	24,452	23,739	21,737
San Bernardino	13,677	14,450	10,295	10,850
San Diego Adult	.	35,538	34,779	35,294
San Diego City	14,785	15,105	14,647	13,539
San Diego Mesa	24,170	23,066	22,578	21,303
San Diego Miramar	7,814	8,268	8,343	7,723
San Joaquin Delta	20,431	19,574	18,014	17,373
San Jose	10,833	12,613	10,667	10,422
San Mateo	15,359	15,493	13,736	12,261
Santa Barbara	11,724	12,065	12,585	11,269
Santa Barbara CED	11,336	11,491	11,200	10,919
Santa Monica	24,129	26,085	25,890	24,209
Santa Rosa	30,603	31,216	30,282	26,518
Sequoias	9,662	9,323	9,533	8,626
Shasta	11,461	9,697	12,149	10,343
Sierra	12,055	14,600	15,195	13,833
Siskiyou	.	3,354	3,230	2,849
Skyline	9,024	9,047	8,785	7,812
Solano	12,546	12,602	12,303	10,457

Table 9 Fall Enrollment

College/Center	1990	1991	1992	1993
Southwestern	14,312	15,571	17,361	15,980
Taft	1,066	.	1,102	1,335
Ventura	12,513	11,841	11,987	10,474
Victor Valley	8,678	9,595	9,157	8,947
Vista	4,761	4,859	4,272	3,192
West Hills	2,403	3,224	3,008	2,937
West Valley	14,470	15,737	14,727	12,770
Yuba	11,169	9,932	10,933	9,017
<b>Estimated Statewide Total</b>	<b>1,505,381</b>	<b>1,515,261</b>	<b>1,500,393</b>	<b>1,376,565</b>

Table 10: Spring Enrollment

College/Center	1991	1992	1993
Alameda	5,311	5,494	4,805
Allan Hancock	14,523	14,427	14,971
American River	23,029	23,565	21,160
Antelope	10,502	10,702	10,312
Bakersfield	14,572	13,195	14,000
Barstow	2,770	2,913	2,630
Butte	13,829	13,001	12,038
Cabrillo	13,432	14,075	12,799
Canada	7,787	7,543	6,244
Canyons	6,179	6,481	6,571
Cerritos	19,938	22,001	20,206
Cerro Coso	4,799	5,218	4,760
Chabot	.	13,565	13,431
Chaffey	11,903	13,234	13,770
Citrus	.	11,930	10,280
Coastline	14,364	14,738	12,765
Columbia	3,323	3,323	2,473
Compton	4,644	5,603	5,466
Contra Costa	8,921	9,043	8,452
Cosumnes River	12,019	12,800	11,830
Crafton Hills	6,309	6,967	5,606
Cuesta	8,384	8,202	7,849
Cuyamaca	4,875	4,956	4,821
Cypress	14,346	14,944	14,220
De Anza	25,862	23,037	21,724
Desert	11,270	11,794	9,606
Diablo Valley	23,112	23,506	21,646
El Camino	25,442	25,674	23,936
Evergreen	12,535	13,349	11,912
Feather River	1,636	1,518	1,176
Foothill	17,559	14,089	13,727
Fresno	.	17,694	17,492
Fullerton	19,999	20,566	20,109
Gavilan	4,675	4,478	1,750
Glendale	20,464	20,453	20,667
Golden West	15,679	15,542	14,309
Grossmont	17,075	16,297	15,326
Hartnell	10,290	10,641	9,394
Imperial Valley	2,737	2,655	6,729
Irvine Valley	9,590	10,636	11,005
Kings River	.	4,887	5,425
LA City	17,355	18,151	16,792
LA East	14,989	15,706	14,734
LA Harbor	10,102	9,910	9,551
LA ITV	504	518	543
LA Mission	7,578	7,820	7,320
LA Pierce	19,295	19,881	18,176
LA Southwest	6,883	6,903	6,036
LA Trade Tech	14,192	14,883	14,270
LA Valley	19,328	20,175	18,842
LA West	9,297	9,497	8,610
Lake Tahoe	2,412	2,598	2,606
Laney	11,473	11,871	11,175

Table 10: Spring Enrollment

College/Center	1991	1992	1993
Las Positas	.	4,949	4,960
Lassen	3,936	4,075	3,215
Long Beach	27,606	25,896	22,462
Los Medanos	9,045	8,858	8,571
Marin	.	10,661	9,968
Marin CED	.	.	2,616
Mendocino	4,679	5,142	3,997
Merced	12,209	13,159	11,375
Merritt	6,981	6,593	5,584
Mira Costa	15,103	14,706	13,382
Mission	11,640	13,246	10,890
Modesto	14,198	16,505	15,663
Monterey Peninsula	.	10,797	9,585
Moorpark	11,637	11,436	10,953
Mt San Antonio	34,150	32,341	30,863
Mt San Jacinto	7,068	7,647	7,513
Napa	.	8,893	8,281
North Orange Adult	28,208	24,867	23,272
Ohlone	9,277	9,497	8,931
Orange Coast	26,033	26,509	23,509
Oxnard	6,626	6,640	6,154
Palo Verde	1,369	1,591	1,974
Palomar	21,115	25,931	24,403
Pasadena	27,427	27,196	27,403
Porterville	3,427	3,454	3,406
Rancho Santiago	28,838	31,835	27,086
Rancho Santiago CED	21,470	21,032	21,046
Redwoods	8,458	8,035	7,494
Rio Hondo	17,169	12,887	15,071
Riverside	20,464	22,634	21,826
SF Center	39,246	34,445	33,784
SF City	31,582	32,073	29,954
Sacramento City	19,131	19,661	18,462
Saddleback	23,984	24,125	22,821
San Bernardino	14,511	13,178	11,744
San Diego Adult	.	34,097	33,927
San Diego City	14,614	15,976	14,495
San Diego Mesa	23,317	22,625	21,807
San Diego Miramar	9,151	8,987	8,821
San Joaquin Delta	19,879	17,850	18,241
San Jose	12,325	12,194	10,377
San Mateo	15,714	14,634	12,755
Santa Barbara	11,884	12,342	11,817
Santa Barbara CED	.	9,038	8,171
Santa Monica	23,822	24,682	23,189
Santa Rosa	33,466	32,369	29,977
Sequoias	8,673	9,370	8,710
Shasta	12,995	13,975	11,200
Sierra	13,375	13,996	13,203
Siskiyou	2,272	3,631	3,753
Skyline	9,203	9,066	7,983
Solano	12,320	12,113	10,972

Table 10: Spring Enrollment

College/Center	1991	1992	1993
Southwestern	15,044	15,642	16,440
Taft	.	.	1,367
Ventura	12,472	11,404	10,915
Victor Valley	9,254	9,662	9,199
Vista	5,507	4,805	3,289
West Hills	2,700	3,242	3,142
West Valley	13,859	15,467	13,483
Yuba	.	11,601	10,588
<b>Estimated Statewide Total</b>	<b>1,502,112</b>	<b>1,513,211</b>	<b>1,422,086</b>

**SECTION 4**

**FALL ENROLLMENT BY COLLEGE FOR STUDENT CHARACTERISTICS**



Table 11: Fall Enrollment By Load

College/Center		1990	1991	1992	1993
Alameda	Full-time	1,752	1,833	1,879	1,823
	Part-time	4,373	4,345	4,089	3,835
Allan Hancock	Full-time	2,222	2,310	2,280	2,337
	Part-time	7,178	7,133	9,508	8,047
	Noncredit	3,953	4,088	4,138	5,011
American River	Full-time	5,475	5,653	5,331	5,161
	Part-time	18,738	17,539	17,831	16,663
	Noncredit	1	.	.	.
Antelope	Full-time	1,917	1,908	2,551	2,412
	Part-time	7,939	8,088	8,149	7,318
	Noncredit	228	233	145	.
Bakersfield	Full-time	3,754	3,701	4,011	3,915
	Part-time	9,578	9,028	9,322	9,103
	Noncredit	478	442	347	276
Barstow	Full-time	565	553	573	625
	Part-time	2,185	3,240	2,489	1,766
	Noncredit	208	186	238	126
Butte	Full-time	5,319	4,190	4,637	4,553
	Part-time	6,868	6,994	6,292	5,695
	Noncredit	1,015	997	978	1,065
Cabrillo	Full-time	2,860	.	3,667	3,769
	Part-time	9,644	.	9,813	8,559
Canada	Full-time	1,472	1,465	1,434	1,408
	Part-time	5,843	6,147	5,370	4,259
Canyons	Full-time	1,979	1,921	2,068	2,090
	Part-time	4,522	4,612	4,602	4,396
	Noncredit	1	.	.	.
Cerritos	Full-time	5,869	4,966	5,221	5,090
	Part-time	14,406	15,776	16,690	14,895
	Noncredit	831	856	839	904
Cerro Coso	Full-time	538	618	764	749
	Part-time	3,857	4,093	4,106	3,489
	Noncredit	631	451	407	616
Chabot	Full-time	.	4,617	4,241	4,186
	Part-time	.	10,721	10,698	9,993
Chaffey	Full-time	2,788	3,173	3,774	3,941
	Part-time	9,798	10,650	11,215	9,950
	Noncredit	1,338	936	1,174	1,079
Citrus	Full-time	2,717	2,323	3,519	3,301
	Part-time	6,877	7,506	8,889	7,216
	Noncredit	1,953	1,934	1,255	715
Coastline	Full-time	530	475	586	466
	Part-time	12,744	11,803	11,467	9,205
	Noncredit	2,165	2,993	.	3,192
Columbia	Full-time	332	628	730	678
	Part-time	2,142	1,944	2,002	1,571
	Noncredit	890	834	649	104
Compton	Full-time	1,518	1,697	1,664	1,620
	Part-time	3,483	3,786	3,971	2,939
	Noncredit	68	184	61	.
Contra Costa	Full-time	2,077	2,159	2,310	2,157
	Part-time	6,495	6,261	6,652	5,534
	Noncredit	265	417	463	763

Table 11: Fall Enrollment By Load

College/Center		1990	1991	1992	1993
Cosumnes River	Full-time	2,007	2,109	2,396	2,641
	Part-time	9,704	10,195	9,604	9,171
Crafton Hills	Full-time	1,221	1,376	1,195	1,307
	Part-time	5,131	5,173	3,853	3,641
Cuesta	Full-time	4,206	3,179	3,342	3,091
	Part-time	3,716	4,613	4,813	4,317
Cuyamaca	Full-time	887	1,129	1,230	1,244
	Part-time	3,742	4,005	3,869	3,347
Cypress	Full-time	5,566	4,353	4,944	4,513
	Part-time	8,596	10,035	9,737	9,370
De Anza	Full-time	8,789	7,408	7,409	7,277
	Part-time	18,947	18,442	17,593	15,902
	Noncredit	303	.	.	1,092
Desert	Full-time	1,823	1,978	2,244	2,231
	Part-time	6,813	7,257	6,896	6,221
	Noncredit	2,276	2,252	1,835	1,097
Diablo Valley	Full-time	6,842	6,974	6,987	6,612
	Part-time	16,030	16,575	16,411	14,171
El Camino	Full-time	6,329	6,226	6,521	6,626
	Part-time	20,434	19,232	18,538	17,049
	Noncredit	157	43	262	49
Evergreen	Full-time	2,532	2,553	2,417	2,324
	Part-time	7,998	9,039	9,178	7,519
Feather River	Full-time	306	337	376	307
	Part-time	925	1,022	880	707
	Noncredit	83	60	8	29
Foothill	Full-time	4,233	2,990	3,649	3,706
	Part-time	16,587	12,877	11,805	10,328
	Noncredit	502	327	11	979
Fresno	Full-time	.	6,623	6,840	6,494
	Part-time	.	12,711	12,276	11,264
	Noncredit	.	.	218	241
Fullerton	Full-time	7,551	5,268	6,409	5,965
	Part-time	12,568	14,862	14,492	12,822
Gavilan	Full-time	1,457	1,571	81	1,334
	Part-time	3,137	2,683	1,473	2,820
	Noncredit	.	.	177	.
Glendale	Full-time	5,249	4,175	4,346	4,298
	Part-time	9,106	10,432	9,928	9,064
	Noncredit	5,168	5,427	5,879	5,530
Golden West	Full-time	4,714	4,155	4,391	4,410
	Part-time	10,697	11,403	10,917	9,556
	Noncredit	.	114	.	3
Grossmont	Full-time	6,148	5,916	5,573	5,470
	Part-time	11,692	11,812	11,207	9,727
Hartnell	Full-time	2,472	2,134	2,365	2,209
	Part-time	7,974	8,253	9,470	4,556
Imperial Valley	Full-time	.	177	2,286	2,776
	Part-time	.	2,477	4,113	3,669
Irvine Valley	Full-time	1,743	1,878	2,079	2,161
	Part-time	7,243	8,292	8,221	7,032
	Noncredit	532	649	29	682

Table 11: Fall Enrollment By Load

College/Center		1990	1991	1992	1993
Kings River	Full-time	.	1,738	2,140	2,472
	Part-time	.	2,932	3,526	3,485
	Noncredit	.	557	524	265
LA City	Full-time	6,364	5,312	5,290	5,269
	Part-time	11,210	12,391	12,210	10,604
	Noncredit	79	37	166	.
LA East	Full-time	5,473	4,308	4,561	4,229
	Part-time	10,533	11,040	11,170	10,509
	Noncredit	433	34	28	.
LA Harbor	Full-time	3,222	3,134	3,089	2,806
	Part-time	6,212	6,737	6,492	5,479
	Noncredit	767	455	823	38
LA ITV	Full-time	15	14	11	10
	Part-time	365	504	665	452
LA Mission	Full-time	2,090	2,193	2,115	1,910
	Part-time	4,186	5,677	5,467	4,326
	Noncredit	1,187	516	588	193
LA Pierce	Full-time	6,905	5,924	5,880	4,907
	Part-time	12,955	13,605	13,053	10,958
LA Southwest	Full-time	2,659	2,645	1,909	1,885
	Part-time	4,242	4,570	4,154	3,726
	Noncredit	44	84	60	220
LA Trade Tech	Full-time	4,956	4,474	4,467	4,486
	Part-time	8,960	10,014	10,022	8,745
	Noncredit	489	567	22	73
LA Valley	Full-time	5,264	4,541	4,621	4,079
	Part-time	13,614	15,033	14,847	13,275
	Noncredit	53	41	52	35
LA West	Full-time	3,116	2,515	2,266	1,941
	Part-time	7,244	7,647	6,917	5,882
	Noncredit	48	50	61	.
Lake Tahoe	Full-time	288	357	409	410
	Part-time	2,114	2,389	2,297	2,031
Laney	Full-time	2,323	2,829	2,956	2,810
	Part-time	8,145	8,818	8,532	8,244
	Noncredit	.	.	93	83
Las Positas	Full-time	.	776	885	961
	Part-time	.	5,128	4,773	4,574
Lassen	Full-time	821	752	755	923
	Part-time	2,333	2,362	2,248	1,652
	Noncredit	288	427	356	213
Long Beach	Full-time	7,242	5,638	5,763	5,730
	Part-time	16,181	17,508	15,917	14,651
	Noncredit	4,496	1,767	1,604	1,929
Los Medanos	Full-time	1,389	1,529	1,601	1,578
	Part-time	7,929	7,359	6,938	5,903
Marin	Full-time	.	2,452	2,550	2,049
	Part-time	.	7,468	8,027	7,176
Marin CED	Noncredit	.	3,072	2,620	3,190
Mendocino	Full-time	973	831	888	871
	Part-time	3,534	3,900	3,717	2,488
	Noncredit	297	183	187	132

Table 11: Fall Enrollment By Load

College/Center		1990	1991	1992	1993
Merced	Full-time	2,100	3,182	3,254	3,188
	Part-time	5,947	5,607	5,195	4,424
	Noncredit	2,978	2,764	2,760	2,909
Merritt	Full-time	1,306	1,445	1,382	1,169
	Part-time	5,365	5,572	4,911	4,123
	Noncredit	.	.	199	197
Mira Costa	Full-time	2,742	1,959	2,632	2,791
	Part-time	6,970	6,982	6,831	5,942
	Noncredit	5,236	4,631	4,225	4,254
Mission	Full-time	2,048	1,839	1,959	1,957
	Part-time	9,074	9,726	9,434	8,414
	Noncredit	.	903	709	284
Modesto	Full-time	2,504	4,031	4,338	4,334
	Part-time	9,405	10,387	10,500	9,496
	Noncredit	1,560	1,848	1,561	1,650
Monterey Peninsula	Full-time	.	1,007	2,129	1,635
	Part-time	.	5,365	7,449	5,521
	Noncredit	.	.	.	1,404
Moorpark	Full-time	5,069	3,953	4,718	4,208
	Part-time	6,674	7,978	7,342	6,784
Mt San Antonio	Full-time	7,194	7,367	7,372	7,304
	Part-time	17,067	16,613	16,448	15,554
	Noncredit	11,173	9,100	7,329	6,652
Mt San Jacinto	Full-time	1,478	1,596	1,720	1,658
	Part-time	4,880	5,314	5,420	5,100
	Noncredit	1,590	1,252	1,085	1,150
Napa	Full-time	.	1,758	1,245	1,254
	Part-time	.	6,033	5,124	4,497
	Noncredit	.	.	1,564	1,854
North Orange Adult	Noncredit	28,115	25,272	24,986	19,670
Ohlone	Full-time	2,738	2,769	2,895	2,608
	Part-time	6,225	7,504	7,199	6,087
Orange Coast	Full-time	8,858	8,305	8,054	7,944
	Part-time	17,343	17,953	16,911	14,999
Oxnard	Full-time	1,647	1,270	1,573	1,539
	Part-time	4,987	4,906	5,005	3,947
Palo Verde	Full-time	200	138	238	227
	Part-time	896	1,075	1,635	1,572
	Noncredit	46	.	30	59
Palomar	Full-time	6,636	5,952	6,093	5,957
	Part-time	14,152	16,629	15,651	14,558
	Noncredit	-	26	3,485	3,412
Pasadena	Full-time	5,666	7,111	6,804	6,568
	Part-time	9,159	17,077	17,441	15,273
	Noncredit	3,279	5,430	4,923	2,616
Porterville	Full-time	895	918	936	1,007
	Part-time	2,943	2,156	2,147	1,907
	Noncredit	71	82	135	118
Rancho Santiago	Full-time	5,485	5,737	6,016	5,882
	Part-time	24,719	27,941	25,246	21,489
Rancho Santiago CED	Noncredit	19,920	18,933	17,938	18,687

Table 11: Fall Enrollment By Load

College/Center		1990	1991	1992	1993
Redwoods	Full-time	2,342	2,315	2,391	2,453
	Part-time	5,908	5,397	5,041	4,379
	Noncredit	580	447	388	325
Rio Hondo	Full-time	4,063	2,719	3,501	3,431
	Part-time	12,142	10,040	9,727	10,479
	Noncredit	.	.	.	929
Riverside	Full-time	5,856	6,148	5,134	5,893
	Part-time	14,799	15,525	16,427	14,801
	Noncredit	81	140	101	381
SF Center	Part-time	.	.	29	.
	Noncredit	37,771	34,589	33,812	31,870
SF City	Full-time	10,423	7,411	8,804	8,932
	Part-time	19,348	22,744	21,486	18,742
Sacramento City	Full-time	5,131	5,095	5,194	5,182
	Part-time	14,427	13,810	13,525	13,475
Saddleback	Full-time	5,876	5,151	4,977	4,641
	Part-time	13,609	15,005	14,545	12,766
	Noncredit	4,373	4,296	4,217	4,330
San Bernardino	Full-time	2,752	3,059	2,597	2,829
	Part-time	10,925	11,391	7,698	8,021
San Diego Adult	Noncredit	.	35,538	34,779	35,294
San Diego City	Full-time	4,027	3,605	3,146	3,298
	Part-time	10,758	11,500	11,501	10,241
San Diego Mesa	Full-time	7,488	5,841	5,218	5,137
	Part-time	16,682	17,225	17,360	16,166
San Diego Miramar	Full-time	1,354	1,232	1,125	1,217
	Part-time	6,460	7,036	7,218	6,506
San Joaquin Delta	Full-time	5,953	5,722	5,869	6,286
	Part-time	13,449	12,926	11,100	10,056
	Noncredit	1,029	926	1,045	1,031
San Jose	Full-time	1,985	2,308	2,099	2,120
	Part-time	8,848	10,305	8,568	8,302
San Mateo	Full-time	3,981	4,168	4,093	3,883
	Part-time	11,378	11,325	9,643	8,378
Santa Barbara	Full-time	4,551	4,665	4,843	4,706
	Part-time	7,173	7,400	7,742	6,563
Santa Barbara CED	Noncredit	11,336	11,491	11,200	10,919
Santa Monica	Full-time	5,500	6,104	6,627	6,636
	Part-time	16,739	16,795	16,980	15,367
	Noncredit	1,890	3,186	2,283	2,206
Santa Rosa	Full-time	7,229	6,664	6,876	6,906
	Part-time	17,757	20,850	19,688	16,096
	Noncredit	3,617	3,702	3,718	3,516
Sequoias	Full-time	4,067	3,731	4,052	4,103
	Part-time	5,490	5,592	5,481	4,523
	Noncredit	105	.	.	.
Shasta	Full-time	3,161	2,664	3,053	3,007
	Part-time	6,442	6,924	7,069	6,492
	Noncredit	1,858	109	2,027	844
Sierra	Full-time	2,303	4,063	4,249	4,071
	Part-time	9,688	10,462	10,899	9,724
	Noncredit	64	75	47	38

Table 11: Fall Enrollment By Load

College/Center		1990	1991	1992	1993
Siskiyou	Full-time	.	871	925	926
	Part-time	.	2,075	1,975	1,584
	Noncredit	.	408	330	339
Skyline	Full-time	1,947	1,990	2,188	2,236
	Part-time	7,077	7,057	6,597	5,576
Solano	Full-time	3,585	3,205	3,435	3,104
	Part-time	8,587	9,338	8,845	7,342
	Noncredit	374	59	23	11
Southwestern	Full-time	4,087	3,395	5,059	5,087
	Part-time	10,225	12,176	12,302	10,893
Taft	Full-time	414	.	523	533
	Part-time	599	.	522	730
	Noncredit	53	.	57	72
Ventura	Full-time	4,035	3,023	3,564	3,271
	Part-time	8,478	8,818	8,423	7,203
Victor Valley	Full-time	2,184	1,951	2,088	1,982
	Part-time	4,840	5,888	5,542	5,232
	Noncredit	1,654	1,756	1,527	1,733
Vista	Full-time	343	298	373	381
	Part-time	3,721	4,004	3,685	2,639
	Noncredit	697	557	214	172
West Hills	Full-time	601	725	727	679
	Part-time	1,802	2,122	1,935	1,778
	Noncredit	.	377	346	480
West Valley	Full-time	4,946	4,487	4,534	4,206
	Part-time	9,524	9,661	8,850	7,625
	Noncredit	.	1,589	1,343	939
Yuba	Full-time	1,547	1,588	2,699	2,720
	Part-time	8,659	8,104	7,980	5,891
	Noncredit	963	240	254	406
<b>Estimated Statewide Total</b>	<b>Full-time</b>	<b>360,860</b>	<b>345,461</b>	<b>354,797</b>	<b>347,689</b>
	<b>Part-time</b>	<b>927,864</b>	<b>968,816</b>	<b>947,672</b>	<b>838,199</b>
	<b>Noncredit</b>	<b>216,657</b>	<b>200,984</b>	<b>197,924</b>	<b>190,677</b>

**Table 12**  
**FALL ENROLLMENT BY ETHNICITY**

Table 12: Fall Enrollment By Ethnicity

College/Center		1990	1991	1992	1993
Alameda	Am Ind/Al	94	66	53	42
	Asian/PI	1,169	1,274	1,434	1,500
	Black	1,825	1,805	1,848	1,757
	Filipino	329	339	353	335
	Hispanic	499	537	557	505
	White	1,779	1,711	1,346	1,105
	Other	85	77	86	85
	Unkn	345	369	291	329
Allan Hancock	Am Ind/Al	197	196	222	189
	Asian/PI	323	361	419	371
	Black	437	458	533	550
	Filipino	230	233	264	244
	Hispanic	2,009	2,514	3,216	3,181
	White	8,399	8,244	9,935	8,678
	Other	201	162	204	138
	Unkn	1,557	1,363	1,133	2,044
American River	Am Ind/Al	659	592	591	502
	Asian/PI	1,170	1,234	1,303	1,401
	Black	1,363	1,459	1,512	1,536
	Filipino	317	345	369	410
	Hispanic	1,697	1,728	1,855	1,905
	White	17,632	16,649	16,200	15,040
	Other	591	623	705	830
	Unkn	785	562	627	200
Antelope	Am Ind/Al	131	131	180	173
	Asian/PI	330	423	447	400
	Black	685	801	918	968
	Filipino	174	236	278	264
	Hispanic	1,100	1,197	1,537	1,512
	White	7,344	7,253	7,357	6,204
	Other	195	140	105	96
	Unkn	125	48	23	113
Bakersfield	Am Ind/Al	339	287	293	295
	Asian/PI	351	339	399	430
	Black	839	790	821	862
	Filipino	226	228	246	242
	Hispanic	2,749	2,945	3,266	3,371
	White	9,062	8,430	8,500	7,982
	Other	88	.	.	.
	Unkn	156	152	155	112
Barstow	Am Ind/Al	43	65	56	47
	Asian/PI	85	96	92	92
	Black	377	382	511	401
	Filipino	42	50	50	36
	Hispanic	499	660	565	533
	White	1,884	2,699	1,999	1,375
	Other	28	27	27	33
	Unkn				
Butte	Am Ind/Al	239	215	219	220
	Asian/PI	608	682	686	668
	Black	175	181	216	207
	Filipino	47	45	46	38
	Hispanic	1,117	964	1,082	1,071
	White	10,523	9,621	9,046	8,503
	Other	27	31	71	75
	Unkn	466	442	541	531



Table 12: Fall Enrollment By Ethnicity

College/Center		1990	1991	1992	1993
Cabrillo	Am Ind/Al	132	.	150	164
	Asian/PI	379	.	458	455
	Black	139	.	162	162
	Filipino	118	.	164	147
	Hispanic	1,495	.	2,017	2,051
	White	10,129	.	10,404	9,215
	Other	.	.	.	131
	Unkn	112	.	125	3
Canada	Am Ind/Al	37	46	49	44
	Asian/PI	593	607	502	459
	Black	302	312	282	264
	Filipino	96	135	111	110
	Hispanic	1,103	1,514	1,325	1,149
	White	5,114	4,932	4,442	3,547
	Other	65	62	73	55
	Unkn	5	4	20	39
Canyons	Am Ind/Al	47	38	46	57
	Asian/PI	279	310	328	311
	Black	137	149	161	166
	Filipino	97	102	133	153
	Hispanic	723	801	960	1,070
	White	5,121	5,049	4,966	4,654
	Other	98	84	76	65
	Unkn	98	84	76	65
Cerritos	Am Ind/Al	357	318	314	268
	Asian/PI	1,823	1,948	2,032	1,878
	Black	1,177	1,239	1,420	1,373
	Filipino	785	837	945	849
	Hispanic	6,154	6,784	7,488	7,461
	White	6,689	6,176	5,799	4,897
	Other	502	559	624	642
	Unkn	3,619	3,737	4,128	3,521
Cerro Coso	Am Ind/Al	105	122	96	132
	Asian/PI	107	126	134	103
	Black	183	205	176	191
	Filipino	64	81	69	73
	Hispanic	262	365	427	347
	White	4,197	4,235	4,345	3,969
	Other	65	.	.	.
	Unkn	43	28	30	39
Chabot	Am Ind/Al	.	167	164	164
	Asian/PI	.	2,245	2,502	2,564
	Black	.	1,641	1,650	1,633
	Filipino	.	1,364	1,391	1,353
	Hispanic	.	2,258	2,246	2,212
	White	.	7,424	6,696	5,942
	Other	.	99	155	179
	Unkn	.	140	135	132
Chaffey	Am Ind/Al	117	133	147	143
	Asian/PI	749	904	1,088	1,019
	Black	1,194	1,379	1,740	1,659
	Filipino	228	281	376	405
	Hispanic	3,091	3,553	4,216	4,339
	White	7,932	7,901	7,957	6,902
	Other	171	153	129	121
	Unkn	442	455	510	382

Table 12: Fall Enrollment By Ethnicity

College/Center		1990	1991	1992	1993
Citrus	Am Ind/Al	97	107	115	92
	Asian/PI	781	961	1,393	1,189
	Black	636	711	797	692
	Filipino	282	346	424	335
	Hispanic	2,356	2,752	3,432	3,142
	White	6,722	6,134	6,689	5,096
	Other	227	254	268	221
	Unkn	446	498	545	465
Coastline	Am Ind/Al	117	119	119	126
	Asian/PI	1,940	2,034	1,716	2,227
	Black	187	173	178	195
	Filipino	169	177	144	148
	Hispanic	1,093	1,321	943	1,166
	White	9,637	9,060	7,808	7,292
	Other	119	93	77	75
	Unkn	2,177	2,294	4,054	1,724
Columbia	Am Ind/Al	44	46	53	61
	Asian/PI	22	23	34	34
	Black	31	26	23	20
	Filipino	8	5	10	9
	Hispanic	106	121	147	129
	White	2,920	3,035	2,959	2,035
	Other	3	3	16	13
	Unkn	230	147	139	52
Compton	Am Ind/Al	21	23	16	9
	Asian/PI	39	94	116	82
	Black	2,800	3,096	3,259	2,631
	Filipino	27	38	34	34
	Hispanic	503	2,146	2,017	1,687
	White	139	236	221	92
	Other	25	17	20	20
	Unkn	1,515	17	13	4
Contra Costa	Am Ind/Al	95	75	97	72
	Asian/PI	988	1,044	1,078	1,039
	Black	2,153	2,027	2,437	2,176
	Filipino	341	398	461	483
	Hispanic	1,267	1,237	1,248	1,179
	White	3,520	3,349	3,321	2,730
	Other	19	64	90	84
	Unkn	454	643	693	691
Cosumnes River	Am Ind/Al	260	254	282	263
	Asian/PI	869	1,128	1,274	1,459
	Black	1,193	1,260	1,226	1,216
	Filipino	344	442	481	458
	Hispanic	1,019	1,080	1,197	1,208
	White	7,564	7,657	6,949	6,564
	Other	326	362	449	516
	Unkn	136	121	142	128
Crafton Hills	Am Ind/Al	101	94	84	74
	Asian/PI	185	193	169	150
	Black	210	198	175	163
	Filipino	32	53	53	52
	Hispanic	789	776	698	727
	White	4,700	4,979	3,713	3,640
	Other	125	114	95	85
	Unkn	210	142	61	57

Table 12: Fall Enrollment By Ethnicity

College/Center		1990	1991	1992	1993
Cuesta	Am Ind/Al	95	101	94	85
	Asian/PI	222	226	244	254
	Black	108	124	127	134
	Filipino	84	92	103	93
	Hispanic	624	704	848	845
	White	6,480	6,274	6,502	5,815
	Other	81	64	69	51
	Unkn	228	207	168	131
Cuyamaca	Am Ind/Al	85	79	91	76
	Asian/PI	149	163	163	160
	Black	142	182	178	165
	Filipino	84	100	127	110
	Hispanic	508	578	627	600
	White	3,592	3,944	3,803	3,365
	Other	47	67	76	86
	Unkn	22	21	34	29
Cypress	Am Ind/Al	217	163	137	137
	Asian/PI	1,664	1,853	2,240	2,443
	Black	419	464	536	548
	Filipino	523	682	811	820
	Hispanic	1,765	2,158	2,397	2,419
	White	8,958	8,529	8,038	7,105
	Other	5	90	111	123
	Unkn	611	449	411	296
De Anza	Am Ind/Al	196	182	191	202
	Asian/PI	4,726	5,183	5,778	6,180
	Black	944	960	940	983
	Filipino	954	1,180	1,322	1,302
	Hispanic	2,064	2,125	2,194	2,393
	White	13,927	13,291	12,140	11,340
	Other	539	410	316	288
	Unkn	4,689	2,519	2,121	1,583
Desert	Am Ind/Al	109	125	129	102
	Asian/PI	190	247	241	189
	Black	464	552	435	337
	Filipino	125	170	166	160
	Hispanic	2,716	2,852	2,912	2,921
	White	6,408	6,642	6,270	5,149
	Other	65	72	66	67
	Unkn	835	827	756	624
Diablo Valley	Am Ind/Al	145	162	148	137
	Asian/PI	1,785	2,047	2,210	2,225
	Black	734	838	860	806
	Filipino	668	828	974	957
	Hispanic	1,454	1,683	1,789	1,761
	White	17,599	17,460	16,817	14,291
	Other	39	132	212	247
	Unkn	448	399	388	359
El Camino	Am Ind/Al	260	219	201	179
	Asian/PI	3,690	3,728	3,827	3,710
	Black	5,177	4,804	4,799	4,655
	Filipino	807	840	871	881
	Hispanic	4,629	4,623	4,833	4,901
	White	11,730	10,466	9,676	8,114
	Other	275	362	502	560
	Unkn	352	459	612	724

Table 12: Fall Enrollment By Ethnicity

College/Center		1990	1991	1992	1993
Evergreen	Am Ind/Al	125	123	128	83
	Asian/PI	2,831	2,947	3,236	3,125
	Black	552	639	580	517
	Filipino	691	762	792	723
	Hispanic	1,923	2,225	2,212	2,008
	White	1,744	2,077	2,270	1,657
	Other	1,041	937	633	369
	Unkn	1,623	1,882	1,744	1,361
Feather River	Am Ind/Al	37	32	37	31
	Asian/PI	15	17	23	15
	Black	22	9	18	10
	Filipino	2	3	2	6
	Hispanic	73	73	61	56
	White	1,137	1,270	1,093	917
	Other	12	12	9	6
	Unkn	16	3	21	2
Foothill	Am Ind/Al	145	110	107	121
	Asian/PI	2,293	1,838	1,945	2,180
	Black	718	574	501	597
	Filipino	301	273	225	278
	Hispanic	1,349	1,150	1,175	1,279
	White	12,855	10,027	9,194	8,587
	Other	232	171	126	119
	Unkn	3,429	2,051	2,192	1,852
Fresno	Am Ind/Al	.	416	387	349
	Asian/PI	.	1,514	1,913	2,024
	Black	.	1,214	1,311	1,278
	Filipino	.	221	238	221
	Hispanic	.	4,655	4,976	4,991
	White	.	10,084	9,303	8,070
	Other	.	244	96	102
	Unkn	.	986	1,110	964
Fullerton	Am Ind/Al	329	253	225	187
	Asian/PI	1,957	2,127	2,517	2,523
	Black	558	568	605	540
	Filipino	295	331	362	351
	Hispanic	3,327	3,746	4,254	4,252
	White	13,000	12,408	12,176	10,258
	Other	.	106	171	186
	Unkn	653	591	591	490
Gavilan	Am Ind/Al	47	37	20	46
	Asian/PI	154	145	61	182
	Black	89	99	41	102
	Filipino	61	58	26	67
	Hispanic	1,396	1,355	665	1,334
	White	2,733	2,446	865	2,271
	Other	59	74	35	81
	Unkn	55	40	18	71
Glendale	Am Ind/Al	140	114	98	83
	Asian/PI	2,273	2,377	2,472	2,308
	Black	308	331	347	302
	Filipino	738	815	937	912
	Hispanic	4,557	4,953	4,737	4,206
	White	10,515	10,493	10,130	9,192
	Other	396	279	192	143
	Unkn	596	672	1,240	1,746

Table 12: Fall Enrollment By Ethnicity

College/Center		1990	1991	1992	1993
Golden West	Am Ind/Al	204	213	228	213
	Asian/PI	2,428	3,050	3,506	3,835
	Black	233	207	207	197
	Filipino	233	214	262	237
	Hispanic	1,330	1,433	1,485	1,437
	White	10,075	9,710	8,978	7,492
	Other	132	93	88	81
	Unkn	776	752	554	477
Grossmont	Am Ind/Al	251	226	213	203
	Asian/PI	944	1,018	1,070	1,142
	Black	528	609	721	722
	Filipino	292	325	362	387
	Hispanic	1,721	1,757	1,785	1,732
	White	13,905	13,483	12,276	10,630
	Other	126	189	240	260
	Unkn	73	121	113	121
Hartnell	Am Ind/Al	109	122	120	77
	Asian/PI	470	438	560	346
	Black	271	273	337	256
	Filipino	357	373	437	398
	Hispanic	2,913	2,932	3,357	2,802
	White	5,519	5,523	6,399	2,687
	Other	78	100	126	84
	Unkn	729	626	499	115
Imperial Valley	Am Ind/Al	.	3	22	26
	Asian/PI	.	11	46	41
	Black	.	1	44	68
	Filipino	.	5	22	31
	Hispanic	.	1,514	4,185	4,664
	White	.	20	308	397
	Other	.	.	11	15
	Unkn	.	5,151	1,761	1,203
Irvine Valley	Am Ind/Al	99	120	71	65
	Asian/PI	1,320	1,566	1,724	1,777
	Black	233	293	178	242
	Filipino	144	191	131	152
	Hispanic	677	868	954	997
	White	6,599	7,291	6,659	6,038
	Other	.	.	120	92
	Unkn	446	490	492	512
Kings River	Am Ind/Al	.	98	100	104
	Asian/PI	.	169	201	201
	Black	.	143	175	169
	Filipino	.	50	57	69
	Hispanic	.	1,927	2,246	2,466
	White	.	2,692	3,034	3,056
	Other	.	135	34	30
	Unkn	.	13	343	127
LA City	Am Ind/Al	66	63	64	79
	Asian/PI	3,054	2,975	3,081	2,634
	Black	2,583	2,505	2,471	2,253
	Filipino	1,107	1,205	1,251	996
	Hispanic	6,599	6,846	6,623	6,083
	White	3,241	3,330	3,388	3,197
	Other	351	244	205	175
	Unkn	652	572	583	456

Table 12: Fall Enrollment By Ethnicity

College/Center		1990	1991	1992	1993
LA East	Am Ind/Al	61	64	57	45
	Asian/PI	3,174	3,072	3,208	2,885
	Black	504	404	394	355
	Filipino	230	223	217	225
	Hispanic	11,128	10,561	10,880	10,346
	White	803	696	665	549
	Other	150	90	81	69
	Unkn	389	272	257	264
LA Harbor	Am Ind/Al	50	55	51	47
	Asian/PI	1,000	1,038	1,098	834
	Black	1,341	1,360	1,316	1,196
	Filipino	590	669	816	719
	Hispanic	2,469	2,699	3,018	2,741
	White	4,074	3,879	3,545	2,445
	Other	117	80	77	61
	Unkn	560	546	483	280
LA ITV	Am Ind/Al	3	5	5	4
	Asian/PI	19	29	43	37
	Black	98	118	142	94
	Filipino	10	13	19	11
	Hispanic	33	69	103	78
	White	181	238	302	195
	Other	6	3	8	5
	Unkn	30	43	54	38
LA Mission	Am Ind/Al	36	50	57	48
	Asian/PI	320	335	359	321
	Black	457	528	466	386
	Filipino	98	114	154	100
	Hispanic	4,172	4,876	4,867	3,951
	White	2,044	2,161	1,977	1,441
	Other	71	60	50	34
	Unkn	265	262	240	148
LA Pierce	Am Ind/Al	151	136	135	110
	Asian/PI	2,358	2,563	2,811	2,473
	Black	737	744	774	713
	Filipino	479	582	585	553
	Hispanic	2,235	2,470	2,488	2,416
	White	12,496	11,819	10,973	8,637
	Other	490	402	344	300
	Unkn	914	813	823	663
LA Southwest	Am Ind/Al	6	2	4	4
	Asian/PI	66	89	68	52
	Black	4,744	4,893	4,452	4,194
	Filipino	15	19	18	12
	Hispanic	1,945	2,155	1,461	1,470
	White	85	72	48	43
	Other	40	26	22	16
	Unkn	44	43	50	40
LA Trade Tech	Am Ind/Al	68	66	63	62
	Asian/PI	1,527	1,426	1,374	1,223
	Black	4,369	4,496	4,649	4,293
	Filipino	362	444	468	427
	Hispanic	5,885	6,542	6,157	5,736
	White	1,583	1,535	1,335	1,162
	Other	201	145	133	108
	Unkn	410	401	332	293

Table 12: Fall Enrollment By Ethnicity

College/Center		1990	1991	1992	1993
LA Valley	Am Ind/Al	96	128	99	105
	Asian/PI	1,755	2,006	2,115	2,049
	Black	1,318	1,392	1,391	1,289
	Filipino	693	857	988	832
	Hispanic	4,126	4,663	4,734	4,540
	White	9,634	9,398	8,953	7,501
	Other	416	310	292	296
	Unkn	893	861	948	777
LA West	Am Ind/Al	37	40	35	38
	Asian/PI	893	899	845	707
	Black	4,951	5,016	4,607	4,005
	Filipino	150	148	149	106
	Hispanic	1,262	1,463	1,318	1,174
	White	2,428	2,024	1,723	1,279
	Other	241	162	156	142
	Unkn	446	460	411	372
Lake Tahoe	Am Ind/Al	45	39	47	49
	Asian/PI	28	50	66	46
	Black	20	16	17	20
	Filipino	25	23	33	26
	Hispanic	313	552	322	321
	White	1,624	1,765	1,987	1,809
	Other	15	13	19	20
	Unkn	332	288	215	150
Laney	Am Ind/Al	125	109	125	117
	Asian/PI	2,112	2,387	2,655	2,771
	Black	3,491	3,932	4,119	4,159
	Filipino	450	477	497	390
	Hispanic	955	1,123	1,094	1,049
	White	2,602	2,757	2,280	2,044
	Other	124	145	157	137
	Unkn	609	717	654	470
Las Positas	Am Ind/Al	.	115	91	87
	Asian/PI	.	237	214	215
	Black	.	94	129	133
	Filipino	.	135	159	162
	Hispanic	.	497	470	512
	White	.	4,768	4,540	4,363
	Other	.	28	24	39
	Unkn	.	30	31	24
Lassen	Am Ind/Al	116	116	96	17
	Asian/PI	154	149	164	86
	Black	178	170	166	144
	Filipino	117	150	141	10
	Hispanic	212	248	243	186
	White	2,647	2,695	2,500	2,296
	Other	14	11	11	27
	Unkn	4	2	2	22
Long Beach	Am Ind/Al	286	265	234	244
	Asian/PI	2,924	3,042	3,139	3,243
	Black	2,903	2,968	2,832	2,949
	Filipino	1,096	1,125	1,223	1,156
	Hispanic	5,739	4,993	4,967	5,116
	White	13,318	11,240	9,735	8,366
	Other	650	645	665	572
	Unkn	1,003	635	489	664

Table 12: Fall Enrollment By Ethnicity

College/Center		1990	1991	1992	1993
Los Medanos	Am Ind/Al	99	83	85	90
	Asian/PI	368	338	370	368
	Black	668	689	637	607
	Filipino	310	342	374	354
	Hispanic	1,160	1,336	1,332	1,264
	White	6,544	5,852	5,424	4,531
	Other	17	41	50	47
	Unkn	152	207	267	220
Marin	Am Ind/Al	.	87	78	62
	Asian/PI	.	592	607	584
	Black	.	314	323	304
	Filipino	.	88	96	92
	Hispanic	.	503	684	635
	White	.	7,905	8,305	7,096
	Other	.	332	411	407
	Unkn	.	99	73	45
Marin CED	Am Ind/Al	.	12	19	11
	Asian/PI	.	213	126	232
	Black	.	47	42	41
	Filipino	.	5	11	8
	Hispanic	.	627	328	487
	White	.	2,039	1,953	2,253
	Other	.	12	4	7
	Unkn	.	117	137	151
Mendocino	Am Ind/Al	174	164	152	128
	Asian/PI	62	67	64	47
	Black	56	36	32	36
	Filipino	17	22	12	6
	Hispanic	309	291	283	254
	White	4,019	4,226	4,177	2,980
	Other	167	108	71	40
	Unkn	.	.	1	.
Merced	Am Ind/Al	125	144	152	114
	Asian/PI	1,015	1,063	1,111	1,084
	Black	541	602	601	608
	Filipino	171	148	140	132
	Hispanic	2,164	2,542	2,413	2,520
	White	6,346	6,451	6,341	5,652
	Other	266	251	241	205
	Unkn	397	352	210	206
Merritt	Am Ind/Al	89	83	73	60
	Asian/PI	692	751	849	629
	Black	2,520	2,361	2,207	2,141
	Filipino	148	158	191	197
	Hispanic	693	809	676	654
	White	2,052	2,174	1,962	1,450
	Other	79	100	84	57
	Unkn	398	581	450	301
Mira Costa	Am Ind/Al	115	123	125	124
	Asian/PI	618	642	757	729
	Black	565	592	544	540
	Filipino	274	257	273	252
	Hispanic	3,305	3,077	2,885	2,796
	White	10,008	8,802	8,951	8,265
	Other	63	79	93	99
	Unkn	.	.	60	182



Table 12: Fall Enrollment By Ethnicity

College/Center		1990	1991	1992	1993
Mission	Am Ind/Al	74	91	106	96
	Asian/PI	2,917	3,179	3,482	3,501
	Black	542	623	521	517
	Filipino	1,038	1,107	1,068	1,084
	Hispanic	1,434	1,540	1,630	1,514
	White	4,690	5,035	4,610	3,647
	Other	118	155	63	80
	Unkn	309	738	622	216
Modesto	Am Ind/Al	143	213	210	201
	Asian/PI	1,148	1,517	1,464	1,405
	Black	217	280	303	330
	Filipino	92	150	163	166
	Hispanic	2,299	2,846	2,957	3,040
	White	9,136	10,785	10,786	9,807
	Other	14	109	204	266
	Unkn	420	366	312	265
Monterey Peninsula	Am Ind/Al	.	66	113	116
	Asian/PI	.	630	856	881
	Black	.	632	842	582
	Filipino	.	214	267	256
	Hispanic	.	483	765	647
	White	.	3,970	6,341	5,628
	Other	.	115	151	99
	Unkn	.	262	243	351
Moorpark	Am Ind/Al	184	167	150	148
	Asian/PI	460	564	656	738
	Black	200	186	198	188
	Filipino	92	146	164	163
	Hispanic	1,031	1,134	1,275	1,198
	White	9,469	9,394	9,128	8,062
	Other	233	226	257	180
	Unkn	74	114	232	315
Mt San Antonio	Am Ind/Al	262	231	230	261
	Asian/PI	4,296	4,714	4,772	4,891
	Black	2,333	2,180	1,933	1,834
	Filipino	1,282	1,438	1,437	1,411
	Hispanic	9,363	9,326	9,373	9,095
	White	15,140	12,735	11,259	10,211
	Other	177	202	472	442
	Unkn	2,581	2,254	1,673	1,365
Mt San Jacinto	Am Ind/Al	174	189	216	193
	Asian/PI	185	181	183	183
	Black	204	186	232	241
	Filipino	48	61	74	88
	Hispanic	1,263	1,511	1,543	1,555
	White	5,805	5,841	5,637	5,325
	Other	90	85	83	99
	Unkn	179	108	257	224
Napa	Am Ind/Al	.	81	93	75
	Asian/PI	.	205	186	184
	Black	.	348	319	304
	Filipino	.	400	417	387
	Hispanic	.	865	940	1,007
	White	.	5,475	5,370	4,883
	Other	.	63	60	60
	Unkn	.	354	548	705

Table 12: Fall Enrollment By Ethnicity

College/Center		1990	1991	1992	1993
North Orange Adult	Am Ind/Al	169	117	165	116
	Asian/PI	2,853	2,686	2,859	2,107
	Black	489	469	455	289
	Filipino	405	402	424	267
	Hispanic	5,510	4,855	5,146	4,008
	White	11,335	9,773	10,633	8,098
	Unkn	7,354	6,970	5,304	4,785
Ohlone	Am Ind/Al	81	88	97	70
	Asian/PI	1,223	1,544	1,762	1,562
	Black	354	390	389	321
	Filipino	414	604	669	632
	Hispanic	958	1,159	1,178	1,032
	White	5,300	5,734	5,172	4,272
	Other	132	135	115	103
Unkn	501	619	712	703	
Orange Coast	Am Ind/Al	306	360	322	228
	Asian/PI	3,569	4,091	4,630	4,869
	Black	357	395	396	386
	Filipino	355	356	347	347
	Hispanic	2,401	2,618	2,732	2,593
	White	18,058	17,449	15,597	13,650
	Other	258	189	182	176
Unkn	897	800	759	694	
Oxnard	Am Ind/Al	82	59	66	40
	Asian/PI	297	343	360	301
	Black	345	346	403	353
	Filipino	380	411	471	381
	Hispanic	2,525	2,346	2,570	2,373
	White	2,863	2,529	2,580	1,937
	Other	101	91	63	54
Unkn	41	51	65	47	
Palo Verde	Am Ind/Al	29	19	64	39
	Asian/PI	15	26	38	32
	Black	57	72	103	84
	Filipino	4	6	7	8
	Hispanic	548	400	572	616
	White	484	674	1,076	976
	Other	3	7	16	63
Unkn	2	9	27	40	
Palomar	Am Ind/Al	259	278	259	265
	Asian/PI	1,044	926	1,149	1,159
	Black	469	573	623	640
	Filipino	365	440	486	490
	Hispanic	2,067	2,886	4,075	4,089
	White	15,809	16,515	17,544	16,176
	Other	126	249	302	251
Unkn	649	740	791	857	
Pasadena	Am Ind/Al	142	197	178	164
	Asian/PI	3,422	6,584	6,986	6,522
	Black	1,452	2,482	2,415	1,995
	Filipino	604	984	982	949
	Hispanic	5,320	8,131	8,380	7,661
	White	5,394	8,326	7,199	5,512
	Other	673	1,020	1,079	1,011
Unkn	1,097	1,894	1,949	643	

Table 12: Fall Enrollment By Ethnicity

College/Center		1990	1991	1992	1993
Porterville	Am Ind/Al	91	60	59	87
	Asian/PI	102	104	93	91
	Black	65	61	95	45
	Filipino	66	63	77	94
	Hispanic	916	890	928	893
	White	2,643	1,970	1,960	1,812
	Other	21	.	.	.
	Unkn	5	8	6	10
Rancho Santiago	Am Ind/Al	373	560	451	450
	Asian/PI	3,759	4,747	4,818	4,513
	Black	1,071	1,178	1,060	886
	Filipino	324	467	501	389
	Hispanic	6,114	7,825	8,051	7,521
	White	17,162	18,175	15,438	12,720
	Other	253	647	795	702
	Unkn	1,148	79	148	190
Rancho Santiago CED	Am Ind/Al	98	68	107	78
	Asian/PI	1,897	2,305	2,622	2,603
	Black	271	213	269	241
	Filipino	58	42	43	47
	Hispanic	13,045	12,012	10,781	11,628
	White	3,410	3,047	2,952	2,868
	Other	175	207	186	516
	Unkn	966	1,039	978	706
Redwoods	Am Ind/Al	260	336	340	331
	Asian/PI	143	174	143	169
	Black	118	104	107	107
	Filipino	18	34	36	35
	Hispanic	426	414	446	444
	White	7,090	6,677	6,401	5,849
	Other	147	103	63	63
	Unkn	628	317	284	159
Rio Hondo	Am Ind/Al	138	92	101	135
	Asian/PI	1,256	1,168	1,275	1,442
	Black	745	446	389	700
	Filipino	291	265	295	318
	Hispanic	7,961	6,805	7,597	8,450
	White	5,513	3,789	3,142	3,527
	Other	145	124	131	144
	Unkn	156	70	298	123
Riverside	Am Ind/Al	315	330	356	311
	Asian/PI	969	1,160	1,417	1,515
	Black	1,939	2,107	2,317	2,151
	Filipino	348	425	507	505
	Hispanic	3,470	3,880	4,272	4,282
	White	12,939	13,085	12,886	11,518
	Other	521	453	417	352
	Unkn	235	373	490	441
SF Center	Am Ind/Al	106	78	89	69
	Asian/PI	14,421	14,403	13,680	12,687
	Black	2,724	2,506	2,271	2,189
	Filipino	1,452	1,264	1,009	977
	Hispanic	8,195	7,284	7,142	6,897
	White	8,633	6,555	7,168	6,767
	Other	16	15	31	34
	Unkn	2,224	2,484	2,451	2,250

Table 12: Fall Enrollment By Ethnicity

College/Center		1990	1991	1992	1993
SF City	Am Ind/Al	184	173	187	174
	Asian/PI	9,078	9,326	9,840	9,142
	Black	2,558	2,382	2,490	2,445
	Filipino	2,424	2,487	2,755	2,612
	Hispanic	3,580	3,693	3,926	3,951
	White	10,168	10,302	9,417	7,905
	Other	211	249	281	303
	Unkn	1,568	1,543	1,394	1,142
Sacramento City	Am Ind/Al	380	353	341	303
	Asian/PI	2,780	2,999	3,018	3,313
	Black	2,263	2,247	2,263	2,194
	Filipino	339	361	373	462
	Hispanic	2,334	2,363	2,429	2,671
	White	10,475	9,681	9,278	8,812
	Other	791	777	966	843
	Unkn	196	124	51	59
Saddleback	Am Ind/Al	300	295	245	191
	Asian/PI	1,267	1,480	1,570	1,579
	Black	281	281	180	237
	Filipino	208	242	163	241
	Hispanic	1,532	1,838	1,878	1,922
	White	19,476	19,547	18,559	16,538
	Other	.	.	166	140
	Unkn	794	769	978	889
San Bernardino	Am Ind/Al	207	167	118	134
	Asian/PI	669	767	594	686
	Black	2,047	2,214	1,798	1,821
	Filipino	170	203	207	190
	Hispanic	2,953	3,274	2,605	2,815
	White	7,378	7,467	4,719	4,880
	Other	167	153	174	195
	Unkn	86	205	80	129
San Diego Adult	Am Ind/Al	.	351	300	294
	Asian/PI	.	4,828	5,024	4,906
	Black	.	2,803	2,793	2,979
	Filipino	.	923	913	983
	Hispanic	.	10,697	9,908	9,771
	White	.	15,159	14,739	14,997
	Other	.	431	708	952
	Unkn	.	346	394	412
San Diego City	Am Ind/Al	238	178	153	157
	Asian/PI	1,137	1,334	1,511	1,473
	Black	2,892	2,909	2,995	2,758
	Filipino	588	640	602	551
	Hispanic	2,595	2,866	2,903	2,699
	White	6,833	6,454	5,698	4,833
	Other	359	324	276	373
	Unkn	143	400	509	695
San Diego Mesa	Am Ind/Al	318	248	241	264
	Asian/PI	2,077	2,410	2,727	2,789
	Black	1,129	1,106	1,234	1,225
	Filipino	938	948	1,157	1,164
	Hispanic	2,361	2,490	2,507	2,427
	White	16,575	14,730	13,398	12,008
	Other	548	488	432	471
	Unkn	224	646	882	955

Table 12: Fall Enrollment By Ethnicity

College/Center		1990	1991	1992	1993
San Diego Miramar	Am Ind/Al	125	123	123	112
	Asian/PI	564	698	774	793
	Black	394	400	436	412
	Filipino	636	747	825	795
	Hispanic	699	800	838	780
	White	5,159	5,189	4,872	4,366
	Other	127	118	106	132
	Unkn	110	193	369	333
San Joaquin Delta	Am Ind/Al	319	277	279	269
	Asian/PI	2,211	2,343	2,069	2,066
	Black	1,061	1,077	1,078	960
	Filipino	805	849	884	883
	Hispanic	3,375	3,451	3,420	3,334
	White	11,501	10,720	9,563	8,598
	Other	673	439	325	697
	Unkn	486	418	396	566
San Jose	Am Ind/Al	193	162	147	127
	Asian/PI	1,737	2,212	2,216	2,524
	Black	685	695	642	668
	Filipino	307	375	325	340
	Hispanic	1,950	2,201	2,097	2,252
	White	3,040	3,191	2,872	2,835
	Other	1,190	979	636	417
	Unkn	1,731	2,798	1,732	1,259
San Mateo	Am Ind/Al	122	115	72	85
	Asian/PI	1,777	2,023	2,172	2,019
	Black	610	543	471	440
	Filipino	704	807	906	860
	Hispanic	1,712	1,801	1,771	1,728
	White	10,145	9,912	8,090	6,853
	Other	114	117	130	158
	Unkn	175	175	124	118
Santa Barbara	Am Ind/Al	110	96	105	102
	Asian/PI	554	599	700	697
	Black	274	267	295	262
	Filipino	105	103	115	116
	Hispanic	2,229	2,525	2,583	2,446
	White	8,191	8,242	8,554	7,420
	Other	181	142	161	157
	Unkn	80	91	72	69
Santa Barbara CED	Am Ind/Al	99	90	81	100
	Asian/PI	440	457	426	409
	Black	67	83	79	85
	Filipino	43	49	48	50
	Hispanic	2,543	2,550	2,743	2,340
	White	7,660	7,857	7,382	7,442
	Other	141	134	155	184
	Unkn	343	271	286	309
Santa Monica	Am Ind/Al	222	183	153	143
	Asian/PI	3,332	3,985	4,212	4,218
	Black	2,358	2,334	2,573	2,505
	Filipino	413	436	487	490
	Hispanic	2,960	3,617	3,794	3,864
	White	12,736	12,403	11,921	10,416
	Other	233	252	272	305
	Unkn	1,875	2,875	2,478	2,268

Table 12: Fall Enrollment By Ethnicity

College/Center		1990	1991	1992	1993
Santa Rosa	Am Ind/Al	334	341	353	332
	Asian/PI	844	972	967	938
	Black	428	493	517	522
	Filipino	165	175	162	191
	Hispanic	2,295	2,619	2,723	2,667
	White	24,215	24,489	23,616	20,277
	Other	355	346	344	328
	Unkn	1,967	1,781	1,600	1,263
Sequoias	Am Ind/Al	197	148	155	142
	Asian/PI	255	279	318	290
	Black	255	252	285	259
	Filipino	129	146	173	152
	Hispanic	2,241	2,419	2,614	2,722
	White	5,817	5,428	5,397	4,570
	Other	284	137	142	117
	Unkn	484	514	449	374
Shasta	Am Ind/Al	408	318	411	370
	Asian/PI	254	243	251	255
	Black	83	72	81	84
	Filipino	23	16	24	21
	Hispanic	415	330	405	452
	White	9,596	8,239	10,272	8,641
	Other	117	94	122	86
	Unkn	565	385	583	434
Sierra	Am Ind/Al	259	307	324	358
	Asian/PI	218	316	322	308
	Black	98	139	156	145
	Filipino	58	95	97	106
	Hispanic	640	793	913	884
	White	10,579	12,667	13,011	11,607
	Other	202	275	307	326
	Unkn	1	8	65	99
Siskiyou	Am Ind/Al	.	114	125	104
	Asian/PI	.	81	98	100
	Black	.	90	68	52
	Filipino	.	2	3	6
	Hispanic	.	149	141	135
	White	.	2,816	2,706	2,355
	Other	.	6	11	15
	Unkn	.	96	78	82
Skyline	Am Ind/Al	59	56	57	51
	Asian/PI	1,297	1,271	1,347	1,320
	Black	581	567	516	475
	Filipino	1,240	1,281	1,358	1,305
	Hispanic	1,556	1,680	1,751	1,611
	White	4,207	4,109	3,658	2,864
	Other	80	78	89	112
	Unkn	4	5	9	74
Solano	Am Ind/Al	144	116	126	123
	Asian/PI	660	650	703	628
	Black	1,540	1,648	1,646	1,530
	Filipino	966	1,114	1,207	1,007
	Hispanic	1,100	1,189	1,250	1,035
	White	8,008	7,712	7,157	5,941
	Other	102	132	169	157
	Unkn	26	41	45	36

Table 12: Fall Enrollment By Ethnicity

College/Center		1990	1991	1992	1993
Southwestern	Am Ind/Al	106	122	139	112
	Asian/PI	540	638	733	644
	Black	783	818	999	926
	Filipino	1,700	2,029	2,266	2,238
	Hispanic	5,715	6,393	7,696	7,725
	White	4,955	5,034	4,981	3,858
	Other	.	.	36	36
	Unkn	513	537	511	441
Taft	Am Ind/Al	25	.	34	32
	Asian/PI	33	.	32	37
	Black	69	.	63	83
	Filipino	2	.	5	5
	Hispanic	48	.	110	152
	White	873	.	840	1,007
	Other	4	.	6	4
	Unkn	12	.	12	15
Ventura	Am Ind/Al	211	147	150	126
	Asian/PI	335	363	379	374
	Black	278	239	275	199
	Filipino	215	233	256	272
	Hispanic	2,808	2,445	2,595	2,569
	White	8,322	8,089	7,947	6,633
	Other	216	190	138	102
	Unkn	128	135	247	199
Victor Valley	Am Ind/Al	90	109	111	108
	Asian/PI	187	206	177	169
	Black	506	623	658	668
	Filipino	103	160	137	154
	Hispanic	1,257	1,506	1,552	1,684
	White	6,486	6,919	6,462	6,108
	Other	44	41	33	37
	Unkn	5	31	27	19
Vista	Am Ind/Al	46	46	39	30
	Asian/PI	373	348	360	278
	Black	741	869	851	841
	Filipino	63	87	54	44
	Hispanic	226	288	299	336
	White	2,537	2,608	2,250	1,356
	Other	72	94	59	47
	Unkn	703	519	360	260
West Hills	Am Ind/Al	31	49	38	39
	Asian/PI	44	68	56	53
	Black	96	217	193	157
	Filipino	45	75	74	54
	Hispanic	608	1,016	975	1,030
	White	1,567	1,778	1,614	1,587
	Other	3	11	19	11
	Unkn	9	10	39	6
West Valley	Am Ind/Al	135	166	152	123
	Asian/PI	1,416	1,554	1,647	1,679
	Black	374	332	360	312
	Filipino	195	205	214	217
	Hispanic	1,298	1,412	1,421	1,369
	White	10,837	11,042	10,248	8,663
	Other	42	43	33	17
	Unkn	173	983	652	390

Table 12: Fall Enrollment By Ethnicity

College/Center		1990	1991	1992	1993
Yuba	Am Ind/Al	285	249	251	204
	Asian/PI	764	635	670	651
	Black	380	324	361	326
	Filipino	98	93	81	94
	Hispanic	1,540	1,411	1,710	1,487
	White	7,685	6,802	7,324	5,801
	Other	51	58	82	78
	Unkn	366	360	454	376
Estimated Statewide	Am Ind/Al	17,508	16,882	16,722	15,470
	Asian/PI	149,306	165,471	175,049	171,633
	Black	103,746	106,492	107,292	101,863
	Filipino	40,289	44,763	47,759	45,696
	Hispanic	269,886	286,422	297,387	291,739
	White	829,486	802,403	767,107	671,873
	Other	21,855	20,198	20,749	20,812
	Unkn	73,305	72,630	68,328	57,479
Total					



Table 13  
FALL ENROLLMENT BY GENDER

49

45

Table 13: Fall Enrollment By Gender (Females)

College/Center	1990	1991	1992	1993
Alameda	3,464	3,458	3,352	3,044
Allan Hancock	7,738	7,668	8,105	7,759
American River	13,628	13,403	13,259	12,279
Antelope	5,832	6,040	6,454	5,867
Bakersfield	7,975	7,690	8,038	7,743
Barstow	1,359	1,576	1,515	1,187
Butte	7,020	6,545	6,293	6,003
Cabrillo	7,166	.	7,793	7,095
Canada	4,863	4,899	4,516	3,685
Canyons	3,652	3,655	3,762	3,726
Cerritos	11,834	12,240	12,945	11,881
Cerro Coso	2,756	2,996	3,202	2,918
Chabot	.	8,130	7,891	7,551
Chaffey	8,473	8,803	9,764	8,930
Citrus	6,251	6,394	7,672	6,297
Coastline	10,224	9,751	7,468	8,261
Columbia	2,156	2,196	2,017	1,371
Compton	2,893	3,290	3,386	2,775
Contra Costa	5,242	5,379	5,711	5,149
Cosumnes River	7,124	7,458	7,131	6,985
Crafton Hills	3,270	3,389	2,676	2,570
Cuesta	4,246	4,170	4,324	3,930
Cuyamaca	2,343	2,685	2,680	2,434
Cypress	8,327	8,387	8,484	7,816
De Anza	13,953	13,535	13,209	13,092
Desert	5,839	6,069	5,955	5,605
Diablo Valley	12,665	12,881	13,054	11,427
El Camino	14,244	13,571	13,599	12,914
Evergreen	5,594	5,984	6,053	5,328
Feather River	781	867	730	641
Foothill	11,265	8,588	7,852	7,909
Fresno	.	10,462	10,172	9,473
Fullerton	10,515	10,317	10,533	9,604
Gavilan	2,419	2,232	971	2,141
Glendale	11,808	11,981	11,802	10,669
Golden West	7,871	8,215	8,073	7,420
Grossmont	10,145	10,124	9,579	8,655
Hartnell	4,455	4,366	4,657	3,578
Imperial Valley	.	1,591	3,858	3,904
Irvine Valley	5,827	6,496	5,970	5,889
Kings River	.	3,254	3,812	3,752
LA City	9,214	9,401	9,489	8,420
LA East	9,518	8,744	9,040	8,456
LA Harbor	6,193	6,233	6,249	4,896
LA ITV	275	366	494	350
LA Mission	4,809	5,280	5,190	4,108
LA Pierce	10,631	10,502	10,340	8,773
LA Southwest	4,631	4,908	4,213	4,155
LA Trade Tech	6,139	6,669	6,691	6,301
LA Valley	10,748	11,241	10,980	9,623
LA West	6,390	6,263	5,728	4,834
Lake Tahoe	1,405	1,590	1,597	1,459
Laney	5,677	6,316	6,384	6,168
Las Positas	.	3,465	3,210	3,154

Table 13: Fall Enrollment By Gender (Females)

College/Center	1990	1991	1992	1993
Lassen	1,778	1,849	1,774	1,509
Long Beach	15,015	13,510	12,586	12,151
Los Medanos	4,820	4,816	4,745	4,330
Marin	.	6,094	6,485	5,683
Marin CED	.	2,164	1,914	2,273
Mendocino	3,174	3,139	3,225	2,290
Merced	6,682	6,703	6,559	6,260
Merritt	4,190	4,431	4,150	3,511
Mira Costa	8,848	7,858	8,188	7,744
Mission	5,373	6,016	5,703	5,256
Modesto	7,664	9,065	9,163	8,559
Monterey Peninsula	.	3,697	5,125	4,744
Moorpark	6,544	6,589	6,578	6,000
Mt San Antonio	19,499	18,372	17,494	16,555
Mt San Jacinto	4,928	5,068	5,169	4,947
Napa	.	4,560	4,786	4,420
North Orange Adult	17,629	16,029	16,040	12,288
Ohlone	5,095	5,919	5,776	4,963
Orange Coast	13,064	12,976	12,548	11,554
Oxnard	3,508	3,218	3,504	3,059
Palo Verde	689	552	683	613
Palomar	11,443	11,978	14,061	13,300
Pasadena	9,760	15,537	15,255	13,490
Porterville	2,016	1,867	1,871	1,857
Rancho Santiago	13,464	14,856	13,772	11,450
Rancho Santiago CED	8,892	8,319	7,968	8,700
Redwoods	5,014	4,631	4,441	4,081
Rio Hondo	6,824	5,682	6,092	6,000
Riverside	11,905	12,436	13,039	12,218
SF Center	20,672	18,934	18,996	18,054
SF City	16,372	16,628	16,822	14,967
Sacramento City	10,807	10,223	10,173	10,109
Saddleback	14,698	14,997	14,701	13,394
San Bernardino	7,344	7,321	5,477	5,349
San Diego Adult	.	20,943	20,808	21,563
San Diego City	7,793	7,763	7,635	6,836
San Diego Mesa	13,003	12,308	12,080	11,382
San Diego Miramar	3,542	3,678	3,403	3,311
San Joaquin Delta	10,667	10,391	9,799	9,267
San Jose	5,722	6,542	5,526	5,489
San Mateo	7,503	7,735	6,884	5,919
Santa Barbara	5,880	5,977	6,263	5,546
Santa Barbara CED	7,380	7,576	7,376	7,153
Santa Monica	13,976	15,180	15,012	14,729
Santa Rosa	17,290	17,509	17,184	14,966
Sequoias	5,528	5,290	5,384	4,916
Shasta	7,036	5,982	7,532	6,164
Sierra	6,702	8,100	8,381	7,584
Siskiyou	.	1,960	1,863	1,687
Skyline	5,234	5,242	5,058	4,325
Solano	7,108	7,346	7,020	6,081
Southwestern	7,594	8,148	9,134	8,574
Taft	625	.	618	723
Ventura	7,098	6,761	6,817	5,973

Table 13: Fall Enrollment By Gender (Females)

College/Center	1990	1991	1992	1993
Victor Valley	5,406	5,857	5,719	5,751
Vista	3,316	3,346	2,941	2,167
West Hills	1,250	1,835	1,508	1,466
West Valley	8,495	9,247	8,582	7,463
Yuba	6,963	5,982	6,743	5,718
<b>Estimated Statewide Females</b>	<b>836,088</b>	<b>836,911</b>	<b>832,055</b>	<b>765,685</b>

Table 13: Fall Enrollment By Gender (Males)

College/Center	1990	1991	1992	1993
Alameda	2,657	2,712	2,606	2,499
Allan Hancock	5,529	5,769	7,710	7,528
American River	10,353	9,777	9,862	9,510
Antelope	4,252	4,189	4,391	3,863
Bakersfield	5,703	5,481	5,641	5,549
Barstow	1,599	2,403	1,785	1,330
Butte	6,182	5,636	5,614	5,310
Cabrillo	5,336	.	5,687	5,233
Canada	2,452	2,713	2,288	1,955
Canyons	2,850	2,878	2,908	2,760
Cerritos	9,272	9,358	9,805	9,008
Cerro Coso	2,012	2,145	2,052	1,890
Chabot	.	7,208	7,048	6,628
Chaffey	5,451	5,956	6,399	6,040
Citrus	5,225	5,302	5,939	4,916
Coastline	5,071	5,269	4,467	4,521
Columbia	1,208	1,210	1,265	966
Compton	2,176	2,377	2,310	1,784
Contra Costa	3,595	3,458	3,714	3,305
Cosumnes River	4,567	4,841	4,835	4,810
Crafton Hills	3,082	3,119	2,372	2,377
Cuesta	3,661	3,621	3,830	3,478
Cuyamaca	2,286	2,449	2,419	2,157
Cypress	5,832	5,921	6,129	6,002
De Anza	12,244	12,308	11,766	11,104
Desert	5,073	5,418	5,020	3,944
Diablo Valley	10,207	10,668	10,344	9,356
El Camino	12,676	11,930	11,722	10,810
Evergreen	4,936	5,608	5,542	4,515
Feather River	520	551	513	402
Foothill	9,529	6,934	6,532	6,590
Fresno	.	8,872	9,162	8,519
Fullerton	9,601	9,811	10,364	9,182
Gavilan	2,175	2,022	760	2,013
Glendale	7,700	8,053	7,736	6,934
Golden West	7,517	7,388	7,190	6,484
Grossmont	7,695	7,604	7,201	6,542
Hartnell	5,985	6,001	7,158	3,166
Imperial Valley	.	1,058	2,533	2,541
Irvine Valley	3,691	4,320	4,349	3,980
Kings River	.	1,973	2,341	2,467
LA City	8,439	8,339	8,177	7,453
LA East	6,921	6,638	6,719	6,282
LA Harbor	4,008	4,093	4,155	3,427
LA ITV	105	152	182	112
LA Mission	2,654	3,106	2,980	2,321
LA Pierce	9,229	9,027	8,593	7,092
LA Southwest	2,314	2,391	1,910	1,676
LA Trade Tech	8,266	8,386	7,620	7,003
LA Valley	8,181	8,373	8,539	7,166
LA West	4,018	3,949	3,516	2,989
Lake Tahoe	997	1,156	1,109	982
Laney	4,786	5,327	5,169	4,942
Las Positas	.	2,439	2,448	2,381

Table 13: Fall Enrollment By Gender (Males)

College/Center	1990	1991	1992	1993
Lassen	1,663	1,691	1,583	1,274
Long Beach	12,897	11,389	10,677	10,131
Los Medanos	4,498	4,072	3,794	3,151
Marin	.	3,821	4,089	3,539
Marin CEU	.	906	704	915
Mendocino	1,630	1,774	1,534	1,189
Merced	4,343	4,849	4,647	4,260
Merritt	2,480	2,574	2,322	1,951
Mira Costa	6,100	5,714	5,500	5,243
Mission	5,680	6,365	6,200	5,356
Modesto	5,805	7,201	7,213	6,902
Monterey Peninsula	.	2,653	4,448	3,809
Moorpark	5,199	5,342	5,482	4,992
Mt San Antonio	15,935	14,708	13,655	12,955
Mt San Jacinto	2,958	3,086	3,054	2,947
Napa	.	3,230	3,143	3,177
North Orange Adult	10,453	9,241	8,941	6,607
Ohlone	3,867	4,352	4,313	3,730
Orange Coast	13,115	13,209	12,355	11,340
Oxnard	3,126	2,958	3,074	2,427
Palo Verde	453	661	1,220	1,244
Palomar	9,339	10,611	11,163	10,588
Pasadena	7,822	12,761	12,587	10,962
Porterville	1,890	1,289	1,347	1,175
Rancho Santiago	16,695	18,798	17,471	15,892
Rancho Santiago CED	10,793	10,341	9,704	9,758
Redwoods	3,801	3,500	3,298	3,048
Rio Hondo	9,380	7,054	7,125	8,838
Riverside	8,722	9,300	9,621	8,857
SF Center	15,690	13,720	13,044	12,334
SF City	13,399	13,518	13,468	12,684
Sacramento City	8,747	8,676	8,537	8,541
Saddleback	9,160	9,449	9,030	8,338
San Bernardino	6,331	7,061	4,816	5,501
San Diego Adult	.	14,565	13,947	13,703
San Diego City	6,986	7,339	7,006	6,474
San Diego Mesa	11,158	10,755	10,494	9,857
San Diego Miramar	4,268	4,589	4,937	4,384
San Joaquin Delta	9,764	9,183	8,215	8,105
San Jose	5,111	6,071	5,141	4,933
San Mateo	7,856	7,757	6,852	6,328
Santa Barbara	5,841	6,080	6,320	5,722
Santa Barbara CED	3,723	3,770	3,650	3,575
Santa Monica	10,150	10,895	10,876	10,178
Santa Rosa	13,209	13,626	13,031	11,429
Sequoias	4,119	4,027	4,142	3,687
Shasta	4,296	3,577	4,496	3,976
Sierra	5,353	6,500	6,794	6,156
Siskiyou	.	1,394	1,367	1,162
Skyline	3,790	3,805	3,727	3,431
Solano	5,438	5,256	5,283	4,376
Southwestern	6,718	7,423	8,227	7,406
Taft	441	.	484	611

Table 13: Fall Enrollment By Gender (Males)

College/Center	1990	1991	1992	1993
Ventura	5,415	5,080	5,170	4,501
Victor Valley	3,272	3,738	3,438	3,196
Vista	1,399	1,508	1,331	1,022
West Hills	1,147	1,379	1,461	1,466
West Valley	5,938	5,862	5,765	4,972
Yuba	4,206	3,950	4,098	3,299
<b>Estimated Statewide Males</b>	<b>662,746</b>	<b>667,848</b>	<b>658,037</b>	<b>603,998</b>

Table 13: Fall Enrollment By Gender (Unknown)

College/Center	1990	1991	1992	1993
Alameda	4	8	10	115
Allan Hancock	86	94	111	108
American River	233	12	41	35
Antelope	.	.	.	.
Bakersfield	132	.	1	2
Barstow	.	.	.	.
Butte	.	.	.	.
Cabrillo	2	.	.	.
Canada	.	.	.	27
Canyons	.	.	.	.
Cerritos	.	.	.	.
Cerro Coso	258	21	23	46
Chabot	.	.	.	.
Chaffey	.	.	.	.
Citrus	71	67	52	19
Coastline	144	251	3,104	171
Columbia	.	.	99	16
Compton	.	.	.	.
Contra Costa	.	.	.	.
Cosumnes River	20	5	34	17
Crafton Hills	.	41	.	1
Cuesta	15	1	1	.
Cuyamaca	.	.	.	.
Cypress	3	80	68	73
De Anza	1,842	7	27	75
Desert	.	.	.	.
Diablo Valley	.	.	.	.
El Camino	.	.	.	.
Evergreen	.	.	.	.
Feather River	13	1	21	.
Foothill	528	672	1,081	514
Fresno	.	.	.	7
Fullerton	3	2	4	1
Gavilan	.	.	.	.
Glendale	15	.	615	1,289
Golden West	23	69	45	65
Grossmont	.	.	.	.
Hartnell	6	20	20	21
Imperial Valley	.	4,051	8	.
Irvine Valley	.	3	10	6
Kings River	.	.	37	3
LA City	.	.	.	.
LA East	.	.	.	.
LA Harbor	.	.	.	.
LA ITV	.	.	.	.
LA Mission	.	.	.	.
LA Pierce	.	.	.	.
LA Southwest	.	.	.	.
LA Trade Tech	.	.	.	.
LA Valley	2	1	1	.
LA West	.	.	.	.
Lake Tahoe	.	.	.	.
Laney	5	4	28	27
Las Positas	.	.	.	.



Table 13: Fall Enrollment By Gender (Unknown)

College/Center	1990	1991	1992	1993
Lassen	1	1	2	5
Long Beach	7	14	21	28
Los Medanos	.	.	.	.
Marin	.	5	3	3
Marin CED	.	2	2	2
Mendocino	.	1	33	12
Merced	.	1	3	1
Merritt	1	12	20	27
Mira Costa	.	.	.	.
Mission	69	87	199	43
Modesto	.	.	23	19
Monterey Peninsula	.	22	5	7
Moorpark	.	.	.	.
Mt San Antonio	.	.	.	.
Mt San Jacinto	62	8	2	14
Napa	.	1	4	8
North Orange Adult	33	2	5	775
Ohlone	1	2	5	2
Orange Coast	22	73	62	49
Oxnard	.	.	.	.
Palo Verde	.	.	.	1
Palomar	6	18	5	39
Pasadena	522	1,320	1,326	5
Porterville	3	.	.	.
Rancho Santiago	45	24	19	29
Rancho Santiago CED	235	273	266	229
Redwoods	15	28	81	28
Rio Hondo	1	23	11	1
Riverside	109	77	2	.
SF Center	1,409	1,935	1,801	1,482
SF City	.	9	.	23
Sacramento City	4	6	9	7
Saddleback	.	6	8	5
San Bernardino	2	68	2	.
San Diego Adult	.	30	24	28
San Diego City	6	3	6	229
San Diego Mesa	9	3	4	64
San Diego Miramar	4	1	3	28
San Joaquin Delta	.	.	.	1
San Jose	.	.	.	.
San Mateo	.	1	.	14
Santa Barbara	3	8	2	1
Santa Barbara CED	233	145	174	191
Santa Monica	3	10	2	2
Santa Rosa	104	81	67	123
Sequoias	15	6	7	23
Shasta	129	138	121	203
Sierra	.	.	20	93
Siskiyou	.	.	.	.
Skyline	.	.	.	56
Solano	.	.	.	.
Southwestern	.	.	.	.
Taft	.	.	.	1
Ventura	.	.	.	.

Table 13: Fall Enrollment By Gender (Unknown)

College/Center	1990	1991	1992	1993
Victor Valley	.	.	.	.
Vista	46	5	.	3
West Hills	6	10	39	5
West Valley	37	628	380	335
Yuba	.	.	92	.
<b>Estimated Statewide Unknowns</b>	<b>6,547</b>	<b>10,502</b>	<b>10,301</b>	<b>6,882</b>

**Table 14**  
**FALL ENROLLMENT BY AGE**

59

55

Table 14: Fall Enrollment By Age

College/Center		1990	1991	1992	1993
Alameda	19 <=	1,051	1,063	991	952
	20-24	1,828	1,886	2,031	1,965
	25-29	1,005	988	987	965
	30-34	689	728	650	555
	35-39	480	494	455	398
	40-49	540	557	571	466
	50+	504	453	279	273
	Unkn	28	9	4	94
Allan Hancock	19 <=	1,946	1,882	1,926	1,878
	20-24	2,343	2,622	2,749	2,680
	25-29	1,837	1,858	2,145	1,858
	30-34	1,702	1,693	2,188	2,074
	35-39	1,324	1,339	1,806	1,908
	40-49	1,625	1,646	2,321	2,324
	50+	2,490	2,401	2,691	2,595
	Unkn	86	90	100	78
American River	19 <=	4,455	4,260	4,081	3,902
	20-24	6,595	6,723	6,732	6,137
	25-29	3,996	3,738	3,756	3,307
	30-34	2,901	2,703	2,671	2,795
	35-39	2,127	2,089	2,123	2,108
	40-49	2,702	2,536	2,602	2,569
	50+	1,227	1,134	1,157	971
	Unkn	211	9	40	35
Antelope	19 <=	2,044	2,028	2,331	2,310
	20-24	1,895	1,956	2,174	2,122
	25-29	1,517	1,428	1,454	1,156
	30-34	1,476	1,604	1,581	1,338
	35-39	1,173	1,285	1,319	1,130
	40-49	1,382	1,343	1,413	1,241
	50+	597	585	573	433
Bakersfield	19 <=	3,117	3,028	3,213	3,346
	20-24	3,108	3,262	3,638	3,627
	25-29	1,861	1,681	1,763	1,713
	30-34	1,698	1,601	1,551	1,411
	35-39	1,399	1,274	1,336	1,164
	40-49	1,557	1,505	1,434	1,369
	50+	930	820	745	664
	Unkn	140	.	.	.
Barstow	19 <=	402	500	494	458
	20-24	620	719	757	588
	25-29	509	604	523	404
	30-34	437	590	444	358
	35-39	351	520	412	270
	40-49	419	685	430	301
	50+	220	361	240	138
Butte	19 <=	2,793	2,382	2,470	2,636
	20-24	3,759	3,859	3,898	3,634
	25-29	1,656	1,576	1,517	1,338
	30-34	1,352	1,157	1,111	985
	35-39	1,213	1,073	953	886
	40-49	1,480	1,222	1,146	1,037
	50+	949	912	812	797

Table 14: Fall Enrollment By Age

College/Center		1990	1991	1992	1993
Cabrillo	19 <=	2,118	.	2,165	2,297
	20-24	3,275	.	3,785	3,489
	25-29	1,670	.	1,761	1,678
	30-34	1,410	.	1,487	1,207
	35-39	1,399	.	1,446	1,206
	40-49	1,696	.	1,908	1,678
	50+	934	.	926	773
	Unkn	2	.	2	.
Canada	19 <=	862	945	885	941
	20-24	1,401	1,483	1,348	1,186
	25-29	976	1,032	920	750
	30-34	858	848	788	654
	35-39	750	778	638	498
	40-49	1,193	1,198	1,049	822
	50+	1,273	1,325	1,176	795
	Unkn	2	3	.	21
Canyons	19 <=	1,737	1,715	1,747	1,820
	20-24	1,811	1,979	2,020	1,966
	25-29	810	811	801	745
	30-34	684	652	703	691
	35-39	539	532	549	512
	40-49	660	601	614	585
	50+	261	243	235	167
	Unkn	.	.	1	.
Cerritos	19 <=	4,713	4,517	4,752	4,342
	20-24	6,278	6,930	7,421	6,986
	25-29	3,240	3,283	3,393	3,072
	30-34	2,186	2,247	2,326	2,100
	35-39	1,454	1,463	1,613	1,415
	40-49	1,696	1,743	1,848	1,639
	50+	1,539	1,415	1,397	1,335
	Unkn	.	.	.	.
Cerro Coso	19 <=	612	589	881	890
	20-24	734	892	823	749
	25-29	797	832	782	654
	30-34	717	768	729	665
	35-39	528	585	607	530
	40-49	730	784	795	676
	50+	631	695	639	652
	Unkn	277	17	21	38
Chabot	19 <=	.	3,231	3,181	2,958
	20-24	.	4,615	4,611	4,642
	25-29	.	2,315	2,258	2,099
	30-34	.	1,649	1,596	1,413
	35-39	.	1,121	1,060	933
	40-49	.	1,464	1,333	1,178
	50+	.	943	900	956
	Unkn	.	.	.	.
Chaffey	19 <=	2,800	3,047	3,386	3,225
	20-24	3,549	4,042	4,696	4,579
	25-29	2,199	2,189	2,294	2,032
	30-34	1,777	1,830	1,838	1,649
	35-39	1,358	1,370	1,533	1,411
	40-49	1,505	1,621	1,662	1,496
	50+	736	660	754	578
	Unkn	.	.	.	.

Table 14: Fall Enrollment By Age

College/Center		1990	1991	1992	1993
Citrus	19 <=	2,797	2,984	3,236	2,922
	20-24	3,125	3,476	4,383	3,797
	25-29	1,416	1,453	1,740	1,359
	30-34	1,107	1,047	1,180	886
	35-39	859	817	954	709
	40-49	1,093	1,038	1,211	864
	50+	1,138	904	934	667
	Unkn	12	44	25	28
Coastline	19 <=	861	866	687	697
	20-24	1,577	1,699	1,648	1,751
	25-29	2,101	2,075	1,894	1,686
	30-34	1,993	1,990	1,821	1,639
	35-39	1,624	1,566	1,468	1,378
	40-49	2,412	2,496	2,241	2,036
	50+	4,844	4,506	2,287	3,713
	Unkn	27	73	7	53
Columbia	19 <=	505	563	590	621
	20-24	343	449	539	500
	25-29	238	257	253	193
	30-34	301	280	277	207
	35-39	325	289	303	211
	40-49	470	460	475	303
	50+	1,182	1,108	943	318
	Unkn	.	.	1	.
Compton	19 <=	1,237	1,202	1,192	768
	20-24	1,237	1,425	1,504	1,299
	25-29	797	951	917	821
	30-34	586	644	702	654
	35-39	488	525	504	437
	40-49	457	515	503	420
	50+	267	405	374	160
	Unkn	.	.	.	.
Contra Costa	19 <=	1,812	1,600	1,906	1,863
	20-24	1,717	1,800	2,005	1,808
	25-29	1,213	1,156	1,239	1,049
	30-34	943	962	963	849
	35-39	806	788	811	737
	40-49	1,052	1,110	1,122	958
	50+	1,294	1,421	1,379	1,190
	Unkn	.	.	.	.
Cosumnes River	19 <=	2,097	2,139	2,202	2,708
	20-24	2,462	2,675	2,793	2,843
	25-29	1,712	1,712	1,691	1,526
	30-34	1,524	1,726	1,565	1,405
	35-39	1,304	1,359	1,265	1,191
	40-49	1,664	1,739	1,690	1,473
	50+	929	950	765	649
	Unkn	19	4	29	17
Crafton Hills	19 <=	1,236	1,259	1,079	1,292
	20-24	1,460	1,694	1,384	1,433
	25-29	972	1,020	783	648
	30-34	829	831	599	534
	35-39	602	658	452	411
	40-49	779	748	526	462
	50+	474	339	225	168
	Unkn	.	.	.	.

Table 14: Fall Enrollment By Age

College/Center		1990	1991	1992	1993
Cuesta	19 <=	2,313	1,981	2,013	2,078
	20-24	2,811	2,857	2,958	2,599
	25-29	826	885	932	833
	30-34	665	619	683	598
	35-39	482	517	591	515
	40-49	561	593	647	547
	50+	258	268	265	189
	Unkn	6	72	66	49
Cuyamaca	19 <=	906	1,080	1,194	1,088
	20-24	1,045	1,315	1,324	1,187
	25-29	686	673	652	547
	30-34	664	694	629	553
	35-39	457	525	506	448
	40-49	625	612	577	535
	50+	246	235	217	233
Cypress	19 <=	3,290	3,108	3,375	3,426
	20-24	4,637	4,954	4,989	4,857
	25-29	2,067	2,076	2,105	1,987
	30-34	1,341	1,416	1,425	1,203
	35-39	970	971	994	893
	40-49	1,150	1,196	1,177	1,054
	50+	706	660	605	463
	Unkn	1	7	11	8
De Anza	19 <=	4,794	4,190	4,261	4,610
	20-24	6,586	6,718	6,789	6,764
	25-29	4,186	4,140	3,943	3,671
	30-34	2,981	3,029	2,800	2,615
	35-39	2,003	1,947	1,875	1,712
	40-49	2,334	2,194	2,011	1,904
	50+	3,083	2,645	2,378	2,445
	Unkn	2,072	987	945	550
Desert	19 <=	2,411	2,542	2,345	1,904
	20-24	2,509	2,849	2,845	2,357
	25-29	1,534	1,564	1,410	1,310
	30-34	1,291	1,316	1,256	1,171
	35-39	921	1,020	1,049	927
	40-49	1,078	1,131	1,116	1,067
	50+	1,168	1,065	954	813
Diablo Valley	19 <=	5,677	5,621	5,603	5,447
	20-24	6,219	6,588	6,710	6,188
	25-29	2,919	2,928	2,711	2,412
	30-34	2,013	2,074	1,998	1,731
	35-39	1,628	1,727	1,721	1,427
	40-49	2,543	2,795	2,745	2,293
	50+	1,873	1,816	1,910	1,285
El Camino	19 <=	6,175	5,535	5,154	5,032
	20-24	7,814	7,872	7,942	7,704
	25-29	4,650	4,349	4,197	3,737
	30-34	3,085	2,943	2,952	2,679
	35-39	1,822	1,756	1,813	1,777
	40-49	2,145	1,950	2,045	1,829
	50+	1,226	1,096	1,218	966
	Unkn	3			

Table 14: Fall Enrollment By Age

College/Center		1990	1991	1992	1993
Evergreen	19 <=	2,196	2,123	1,891	1,723
	20-24	3,020	3,340	3,430	3,177
	25-29	1,687	1,807	1,897	1,615
	30-34	1,222	1,450	1,455	1,191
	35-39	872	1,030	1,093	820
	40-49	1,046	1,327	1,327	928
	50+	487	515	502	389
Feather River	19 <=	205	260	314	282
	20-24	138	151	174	188
	25-29	109	96	108	72
	30-34	151	144	101	97
	35-39	154	152	150	116
	40-49	198	187	180	144
	50+	349	429	217	141
	Unkn	10	.	20	3
Foothill	19 <=	3,081	1,883	2,130	2,735
	20-24	3,515	3,068	3,018	3,047
	25-29	3,242	2,427	2,286	2,031
	30-34	2,507	1,892	1,861	1,486
	35-39	1,718	1,302	1,345	1,185
	40-49	2,260	1,726	1,716	1,410
	50+	4,520	3,584	2,904	2,976
	Unkn	479	312	205	143
Fresno	19 <=	.	4,333	4,475	4,267
	20-24	.	6,016	6,192	5,947
	25-29	.	2,856	2,750	2,596
	30-34	.	2,153	1,938	1,838
	35-39	.	1,546	1,580	1,369
	40-49	.	1,764	1,779	1,504
	50+	.	665	620	478
Unkn	.	1	.	.	
Fullerton	19 <=	5,262	4,845	4,756	4,411
	20-24	7,111	7,272	7,756	7,064
	25-29	2,740	2,762	2,942	2,632
	30-34	1,732	1,764	1,750	1,606
	35-39	1,100	1,222	1,223	1,086
	40-49	1,459	1,464	1,627	1,346
	50+	708	798	845	638
	Unkn	7	3	2	4
Gavilan	19 <=	1,064	922	502	953
	20-24	1,080	1,133	527	1,038
	25-29	629	586	180	551
	30-34	528	505	138	464
	35-39	493	417	111	410
	40-49	545	476	137	436
	50+	255	215	136	302
Glendale	19 <=	3,622	3,464	3,430	3,047
	20-24	4,931	5,211	5,067	4,387
	25-29	2,820	2,845	2,753	2,016
	30-34	2,117	2,269	2,186	1,375
	35-39	1,658	1,748	1,707	1,048
	40-49	1,973	1,964	1,874	1,219
	50+	1,908	1,999	2,022	570
	Unkn	494	534	1,114	5,230



Table 14: Fall Enrollment By Age

College/Center		1990	1991	1992	1993
Golden West	19 <=	3,020	2,918	2,957	2,874
	20-24	4,755	5,088	5,003	4,767
	25-29	2,663	2,613	2,493	2,302
	30-34	1,502	1,570	1,485	1,300
	35-39	992	1,049	1,027	837
	40-49	1,310	1,322	1,313	1,055
	50+	1,164	1,109	1,030	834
	Unkn	5	3	.	.
Grossmont	19 <=	4,548	3,968	3,721	3,667
	20-24	6,460	6,897	6,421	5,606
	25-29	2,385	2,337	2,230	2,002
	30-34	1,557	1,613	1,535	1,363
	35-39	1,123	1,133	1,091	1,037
	40-49	1,245	1,246	1,259	1,113
	50+	522	534	523	409
	Unkn	.	.	.	.
Hartnell	19 <=	1,623	1,468	1,597	1,463
	20-24	1,839	1,908	1,986	1,815
	25-29	1,287	1,167	1,280	913
	30-34	1,378	1,279	1,483	749
	35-39	1,339	1,360	1,602	634
	40-49	1,683	1,846	2,377	730
	50+	1,254	1,338	1,496	460
	Unkn	43	21	14	1
Imperial Valley	19 <=	.	781	1,482	1,580
	20-24	.	826	1,846	1,876
	25-29	.	325	823	818
	30-34	.	270	746	694
	35-39	.	203	657	645
	40-49	.	185	607	646
	50+	.	64	238	186
	Unkn	.	4,051	.	.
Irvine Valley	19 <=	1,435	1,634	1,724	1,760
	20-24	2,214	2,738	2,896	2,882
	25-29	1,437	1,587	1,653	1,373
	30-34	1,060	1,177	1,122	969
	35-39	796	881	914	690
	40-49	1,241	1,327	1,172	977
	50+	1,316	1,460	840	1,201
	Unkn	19	15	8	23
Kings River	19 <=	.	1,229	1,588	1,997
	20-24	.	1,259	1,551	1,627
	25-29	.	517	629	577
	30-34	.	496	546	505
	35-39	.	436	493	441
	40-49	.	479	587	481
	50+	.	803	784	590
	Unkn	.	8	12	4
LA City	19 <=	1,883	1,961	1,820	1,548
	20-24	5,126	5,230	5,220	4,814
	25-29	3,557	3,580	3,479	3,088
	30-34	2,561	2,558	2,560	2,219
	35-39	1,757	1,742	1,831	1,721
	40-49	1,807	1,788	1,846	1,732
	50+	962	881	910	751

Table 14: Fall Enrollment By Age

College/Center		1990	1991	1992	1993
LA East	19 <=	3,267	2,897	2,578	2,392
	20-24	5,749	5,564	5,878	5,750
	25-29	2,868	2,725	2,884	2,573
	30-34	1,733	1,573	1,715	1,542
	35-39	1,051	1,032	1,053	968
	40-49	1,142	1,044	1,146	1,044
	50+	629	547	505	464
LA Harbor	19 <=	1,799	1,830	1,924	1,794
	20-24	2,799	2,984	3,114	2,755
	25-29	1,477	1,521	1,515	1,313
	30-34	1,078	1,054	1,009	810
	35-39	763	761	794	562
	40-49	1,150	1,131	1,013	654
	50+	1,135	1,045	1,035	435
LA ITV	19 <=	23	32	44	37
	20-24	42	103	116	84
	25-29	76	87	112	73
	30-34	67	84	122	76
	35-39	65	90	101	75
	40-49	79	84	138	89
	50+	28	38	43	28
LA Mission	19 <=	946	1,279	1,266	1,079
	20-24	1,546	1,850	1,971	1,641
	25-29	1,201	1,378	1,270	955
	30-34	1,028	1,088	1,068	831
	35-39	834	914	894	696
	40-49	1,194	1,192	1,082	843
	50+	714	685	619	384
LA Pierce	19 <=	4,637	4,427	4,253	3,761
	20-24	6,701	6,522	6,366	5,298
	25-29	3,104	2,982	2,895	2,440
	30-34	1,750	1,920	1,869	1,550
	35-39	1,222	1,236	1,194	1,004
	40-49	1,444	1,504	1,478	1,199
	50+	1,002	938	878	613
LA Southwest	19 <=	906	877	717	632
	20-24	1,759	1,890	1,594	1,545
	25-29	1,291	1,393	1,145	1,188
	30-34	1,038	1,158	952	893
	35-39	741	801	696	674
	40-49	855	880	748	672
	50+	355	300	271	227
LA Trade Tech	19 <=	1,692	2,046	1,717	1,511
	20-24	3,856	4,022	3,942	3,766
	25-29	2,738	2,780	2,738	2,536
	30-34	2,167	2,216	2,177	1,932
	35-39	1,591	1,599	1,564	1,436
	40-49	1,657	1,701	1,694	1,542
	50+	704	691	679	581
LA Valley	19 <=	3,252	3,256	3,169	3,140
	20-24	5,933	6,168	6,163	5,631
	25-29	3,349	3,380	3,316	2,904
	30-34	2,209	2,242	2,265	1,975
	35-39	1,466	1,644	1,633	1,363
	40-49	1,611	1,780	1,806	1,473
	50+	1,111	1,145	1,168	903

Table 14: Fall Enrollment By Age

College/Center		1990	1991	1992	1993
LA West	19 <=	1,298	1,356	1,092	950
	20-24	2,708	2,852	2,635	2,262
	25-29	1,980	1,876	1,774	1,541
	30-34	1,387	1,316	1,247	1,111
	35-39	1,018	970	894	700
	40-49	1,203	1,145	991	822
	50+	814	697	611	437
Lake Tahoe	19 <=	269	320	301	328
	20-24	472	505	512	521
	25-29	374	433	369	319
	30-34	405	419	377	299
	35-39	335	370	420	351
	40-49	395	487	482	405
	50+	152	212	245	218
Laney	19 <=	1,119	1,243	1,286	1,448
	20-24	2,572	2,969	3,144	3,191
	25-29	1,894	2,150	2,132	1,895
	30-34	1,469	1,637	1,525	1,390
	35-39	1,222	1,274	1,200	1,061
	40-49	1,476	1,637	1,543	1,427
	50+	706	733	747	705
	Unkn	10	4	4	20
Las Positas	19 <=	.	1,179	1,189	1,271
	20-24	.	1,450	1,607	1,546
	25-29	.	815	799	693
	30-34	.	672	678	550
	35-39	.	542	462	445
	40-49	.	816	585	530
	50+	.	430	338	500
Lassen	19 <=	873	831	809	784
	20-24	651	679	702	585
	25-29	347	373	356	250
	30-34	349	364	321	249
	35-39	351	361	310	233
	40-49	501	534	496	376
	50+	369	398	363	305
Unkn	1	1	2	6	
Long Beach	19 <=	4,167	3,995	3,860	3,825
	20-24	7,053	6,756	6,580	6,519
	25-29	4,577	4,085	3,625	3,428
	30-34	3,494	3,081	2,721	2,659
	35-39	2,514	2,266	2,034	1,884
	40-49	2,846	2,381	2,233	1,978
	50+	2,944	2,111	1,954	1,626
Unkn	324	238	277	391	
Los Medanos	19 <=	1,660	1,749	1,427	1,385
	20-24	1,535	1,716	1,855	1,741
	25-29	1,386	1,260	1,273	1,022
	30-34	1,397	1,343	1,238	1,034
	35-39	1,191	1,023	1,033	901
	40-49	1,574	1,322	1,269	1,015
	50+	575	475	444	383

Table 14: Fall Enrollment By Age

College/Center		1990	1991	1992	1993
Marin	19 <=	.	1,278	1,337	1,237
	20-24	.	2,450	2,550	2,255
	25-29	.	1,483	1,614	1,384
	30-34	.	1,231	1,308	1,129
	35-39	.	946	1,044	843
	40-49	.	1,411	1,526	1,317
	50+	.	1,094	1,171	1,045
	Unkn	.	27	27	15
Marin CED	19 <=	.	239	200	173
	20-24	.	307	181	256
	25-29	.	216	126	215
	30-34	.	214	152	192
	35-39	.	223	146	196
	40-49	.	286	258	295
	50+	.	1,497	1,490	1,777
	Unkn	.	90	67	86
Mendocino	19 <=	663	726	712	679
	20-24	558	617	617	535
	25-29	473	492	414	331
	30-34	561	559	496	353
	35-39	666	692	618	404
	40-49	1,118	1,108	1,158	738
	50+	765	720	771	450
	Unkn	.	.	6	1
Merced	19 <=	1,889	2,124	1,978	2,000
	20-24	2,032	2,255	2,342	2,380
	25-29	1,668	1,614	1,580	1,374
	30-34	1,415	1,504	1,407	1,237
	35-39	1,090	1,146	1,081	933
	40-49	1,372	1,381	1,308	1,158
	50+	1,540	1,527	1,512	1,436
	Unkn	19	2	1	3
Merritt	19 <=	1,056	896	814	710
	20-24	1,303	1,516	1,506	1,384
	25-29	1,039	1,133	1,044	878
	30-34	916	970	878	717
	35-39	728	804	746	622
	40-49	1,011	1,077	995	804
	50+	613	599	493	353
	Unkn	5	22	16	21
Mira Costa	19 <=	2,729	2,607	2,388	2,453
	20-24	3,529	3,529	3,505	3,555
	25-29	2,168	1,931	1,998	1,782
	30-34	1,669	1,422	1,430	1,335
	35-39	1,300	1,024	1,070	937
	40-49	1,421	1,146	1,291	1,076
	50+	2,132	1,913	1,943	1,840
	Unkn	.	.	63	9
Mission	19 <=	817	841	927	987
	20-24	2,418	2,392	2,451	2,525
	25-29	2,666	2,709	2,377	2,096
	30-34	2,004	2,146	2,164	1,795
	35-39	1,226	1,395	1,375	1,201
	40-49	1,385	1,465	1,454	1,255
	50+	586	623	645	746
	Unkn	20	897	709	50

Table 14: Fall Enrollment By Age

College/Center		1990	1991	1992	1993
Modesto	19 <=	2,975	3,464	3,464	3,471
	20-24	3,115	3,986	4,305	4,158
	25-29	1,901	2,249	2,261	1,958
	30-34	1,712	2,054	2,026	1,843
	35-39	1,407	1,644	1,676	1,552
	40-49	1,556	1,895	1,787	1,720
	50+	801	974	880	778
	Unkn	2	.	.	.
Monterey Peninsula	19 <=	.	1,019	1,318	1,228
	20-24	.	1,554	1,939	1,556
	25-29	.	1,114	1,393	1,051
	30-34	.	802	1,261	990
	35-39	.	674	1,131	945
	40-49	.	728	1,575	1,313
	50+	.	456	958	1,467
	Unkn	.	25	3	10
Moorpark	19 <=	3,402	3,359	3,472	3,521
	20-24	3,491	3,819	4,037	3,664
	25-29	1,390	1,284	1,331	1,214
	30-34	1,004	1,008	1,012	858
	35-39	809	853	792	651
	40-49	1,121	1,094	975	771
	50+	522	512	439	312
	Unkn	4	2	2	1
Mt San Antonio	19 <=	8,241	7,722	6,797	6,680
	20-24	8,884	9,210	9,315	9,167
	25-29	4,448	4,063	3,828	3,540
	30-34	3,448	3,006	2,759	2,472
	35-39	2,684	2,332	2,208	1,981
	40-49	3,324	2,932	2,713	2,389
	50+	4,405	3,815	3,529	3,281
Mt San Jacinto	19 <=	1,405	1,488	1,536	1,472
	20-24	1,376	1,562	1,733	1,653
	25-29	1,023	1,086	1,084	990
	30-34	908	1,013	1,030	1,012
	35-39	801	894	947	852
	40-49	977	992	960	940
	50+	1,396	1,117	935	977
	Unkn	62	10	.	12
Napa	19 <=	.	1,278	1,353	1,349
	20-24	.	1,636	1,564	1,489
	25-29	.	1,059	920	865
	30-34	.	967	870	767
	35-39	.	867	789	744
	40-49	.	1,246	1,174	1,083
	50+	.	738	1,262	1,308
	Unkn	.	.	1	.
North Orange Adult	19 <=	4,475	3,673	3,241	2,162
	20-24	5,274	4,859	4,589	3,185
	25-29	3,404	2,946	2,950	2,305
	30-34	2,586	2,246	2,164	1,783
	35-39	1,896	1,673	1,763	1,486
	40-49	2,545	2,379	2,457	1,928
	50+	7,935	7,496	7,822	6,821

Table 14: Fall Enrollment By Age

College/Center		1990	1991	1992	1993
Ohlone	19 <=	1,929	2,076	2,169	2,046
	20-24	2,198	2,631	2,760	2,545
	25-29	1,367	1,557	1,478	1,162
	30-34	1,135	1,257	1,179	975
	35-39	845	976	930	785
	40-49	1,025	1,194	1,102	819
	50+	464	582	476	363
Orange Coast	19 <=	5,738	5,389	5,178	4,917
	20-24	9,173	9,208	8,725	8,139
	25-29	4,364	4,379	4,201	3,796
	30-34	2,599	2,736	2,546	2,267
	35-39	1,512	1,577	1,605	1,484
	40-49	1,725	1,862	1,749	1,554
	50+	1,090	1,107	961	786
Oxnard	19 <=	1,002	918	982	1,050
	20-24	1,553	1,631	1,805	1,525
	25-29	1,150	997	1,025	853
	30-34	883	806	841	652
	35-39	673	611	604	505
	40-49	855	791	839	582
	50+	518	422	482	319
Palo Verde	19 <=	357	325	362	391
	20-24	152	140	203	223
	25-29	154	134	239	261
	30-34	114	154	301	262
	35-39	115	147	243	248
	40-49	153	199	353	315
	50+	96	110	201	156
Unkn	1	4	1	2	
Palomar	19 <=	4,472	4,761	5,089	5,171
	20-24	5,164	5,905	6,428	6,011
	25-29	3,015	3,188	3,307	3,066
	30-34	2,385	2,526	2,612	2,378
	35-39	1,966	2,105	2,069	1,985
	40-49	2,438	2,662	2,749	2,525
	50+	1,347	1,453	2,975	2,785
Unkn	1	7	.	6	
Pasadena	19 <=	4,303	6,550	6,502	5,696
	20-24	5,552	9,338	9,653	8,896
	25-29	2,468	4,069	4,028	3,568
	30-34	1,577	2,670	2,552	2,225
	35-39	1,088	1,789	1,699	1,504
	40-49	1,233	2,104	1,997	1,690
	50+	744	1,214	1,044	863
Unkn	1,139	1,884	1,693	15	
Porterville	19 <=	649	688	736	703
	20-24	631	615	630	689
	25-29	488	373	325	318
	30-34	502	346	375	278
	35-39	481	331	305	258
	40-49	641	395	435	369
	50+	512	408	412	417
Unkn	5	.	.	.	

Table 14: Fall Enrollment By Age

College/Center		1990	1991	1992	1993
Rancho Santiago	19 <=	3,227	3,785	3,713	3,367
	20-24	6,724	7,608	7,819	7,250
	25-29	5,656	5,909	5,453	4,704
	30-34	4,544	4,953	4,313	3,636
	35-39	3,329	3,725	3,129	2,886
	40-49	4,118	4,860	4,168	3,547
	50+	2,595	2,837	2,662	1,956
	Unkn	11	1	5	25
Rancho Santiago CED	19 <=	3,423	2,924	2,571	2,698
	20-24	5,525	5,566	5,224	5,005
	25-29	3,600	3,441	3,339	3,572
	30-34	2,133	1,985	1,966	2,177
	35-39	1,255	1,174	1,145	1,293
	40-49	1,373	1,267	1,257	1,339
	50+	2,611	2,576	2,427	2,603
	Unkn			9	
Redwoods	19 <=	1,550	1,451	1,445	1,649
	20-24	1,712	1,797	1,804	1,803
	25-29	1,039	942	836	722
	30-34	1,004	882	791	618
	35-39	960	881	818	639
	40-49	1,320	1,215	1,119	918
	50+	1,120	918	900	774
	Unkn	125	73	107	34
Rio Hondo	19 <=	2,763	2,318	2,624	2,625
	20-24	4,221	3,830	4,277	4,874
	25-29	2,877	2,260	2,189	2,536
	30-34	2,015	1,525	1,440	1,727
	35-39	1,438	1,019	1,024	1,151
	40-49	1,962	1,228	1,172	1,311
	50+	887	579	502	615
	Unkn	42			
Riverside	19 <=	4,818	4,899	5,526	5,259
	20-24	5,333	5,899	6,108	5,902
	25-29	3,010	3,066	3,050	2,678
	30-34	2,662	2,691	2,612	2,331
	35-39	1,949	2,168	2,197	1,941
	40-49	2,123	2,107	2,118	2,005
	50+	841	982	1,051	958
	Unkn				
SF Center	19 <=	2,454	2,149	1,867	1,682
	20-24	4,705	4,102	3,904	3,596
	25-29	5,229	4,621	4,293	3,922
	30-34	4,911	3,960	4,017	3,921
	35-39	3,875	3,435	3,732	3,382
	40-49	4,857	4,615	5,007	4,795
	50+	8,222	8,281	8,238	8,706
	Unkn	3,518	3,426	2,783	1,866
SF City	19 <=	4,066	3,993	4,032	3,759
	20-24	8,874	8,928	9,309	9,042
	25-29	6,066	5,908	5,858	5,264
	30-34	3,858	4,004	3,853	3,430
	35-39	2,588	2,643	2,599	2,338
	40-49	2,762	2,823	2,811	2,463
	50+	1,543	1,641	1,575	1,207
	Unkn	14	215	253	171

Table 14: Fall Enrollment By Age

College/Center		1990	1991	1992	1993
Sacramento City	19 <=	3,101	2,894	2,751	3,535
	20-24	5,379	5,587	5,697	5,349
	25-29	3,465	3,280	3,240	3,004
	30-34	2,554	2,461	2,352	2,241
	35-39	1,864	1,748	1,718	1,625
	40-49	2,116	1,974	1,991	2,032
	50+	1,078	956	961	864
	Unkn	1	5	9	7
Saddleback	19 <=	3,903	3,671	3,439	3,248
	20-24	5,034	5,456	5,272	5,019
	25-29	2,656	2,792	2,692	2,349
	30-34	2,085	2,167	2,216	1,858
	35-39	1,618	1,698	1,673	1,553
	40-49	2,454	2,537	2,527	2,192
	50+	6,046	6,084	5,899	5,506
	Unkn	62	47	21	12
San Bernardino	19 <=	2,300	2,233	1,370	1,559
	20-24	3,104	3,383	2,679	2,745
	25-29	2,200	2,347	1,669	1,759
	30-34	1,943	2,091	1,555	1,554
	35-39	1,512	1,624	1,184	1,267
	40-49	1,829	1,965	1,358	1,455
	50+	789	807	480	511
	Unkn				
San Diego Adult	19 <=	.	3,949	3,621	3,361
	20-24	.	5,584	5,366	4,952
	25-29	.	4,713	4,494	4,403
	30-34	.	3,768	3,717	3,738
	35-39	.	3,015	2,903	3,068
	40-49	.	4,040	4,031	4,337
	50+	.	10,460	10,640	11,434
	Unkn	.	9	7	1
San Diego City	19 <=	1,752	1,763	1,620	1,610
	20-24	4,422	4,639	4,461	4,066
	25-29	3,103	3,132	3,057	2,703
	30-34	2,116	2,148	2,037	1,932
	35-39	1,381	1,388	1,444	1,367
	40-49	1,404	1,536	1,516	1,405
	50+	600	488	507	456
	Unkn	7	11	5	.
San Diego Mesa	19 <=	4,888	4,295	4,277	4,389
	20-24	8,115	7,900	7,615	7,239
	25-29	4,594	4,358	4,210	3,867
	30-34	2,664	2,689	2,591	2,342
	35-39	1,565	1,533	1,646	1,432
	40-49	1,589	1,584	1,559	1,497
	50+	750	704	675	535
	Unkn	5	3	5	2
San Diego Miramar	19 <=	934	972	1,015	1,004
	20-24	1,923	2,304	2,237	2,114
	25-29	1,601	1,736	1,581	1,532
	30-34	1,239	1,278	1,223	1,233
	35-39	802	857	883	776
	40-49	998	843	1,083	834
	50+	313	277	320	230
	Unkn	4	1	1	.



Table 14: Fall Enrollment By Age

College/Center		1990	1991	1992	1993
San Joaquin Delta	19 <=	4,438	4,235	3,805	3,821
	20-24	4,705	5,000	4,811	4,766
	25-29	2,845	2,584	2,424	2,388
	30-34	2,552	2,412	2,126	1,959
	35-39	2,156	2,015	1,766	1,630
	40-49	2,560	2,301	2,092	1,929
	50+	1,175	1,027	990	856
	Unkn	.	.	.	24
San Jose	19 <=	1,700	1,990	1,234	1,382
	20-24	2,597	3,086	2,856	2,900
	25-29	2,101	2,278	1,997	1,907
	30-34	1,477	1,723	1,521	1,391
	35-39	1,056	1,221	1,150	1,052
	40-49	1,184	1,468	1,253	1,211
	50+	718	847	656	579
	Unkn	.	.	.	.
San Mateo	19 <=	2,941	3,031	2,898	2,790
	20-24	3,572	3,848	3,653	3,328
	25-29	2,206	2,259	2,006	1,758
	30-34	1,692	1,716	1,393	1,296
	35-39	1,271	1,160	1,108	959
	40-49	1,835	1,715	1,436	1,197
	50+	1,842	1,761	1,242	926
	Unkn	.	3	.	7
Santa Barbara	19 <=	3,158	3,336	3,318	3,012
	20-24	3,951	4,164	4,288	4,030
	25-29	1,632	1,603	1,769	1,553
	30-34	1,128	1,080	1,140	960
	35-39	697	742	768	674
	40-49	776	758	886	762
	50+	382	359	409	276
	Unkn	.	23	7	2
Santa Barbara CED	19 <=	593	575	592	450
	20-24	995	956	976	849
	25-29	1,125	1,029	955	913
	30-34	1,256	1,234	1,160	1,132
	35-39	1,116	1,215	1,135	1,155
	40-49	1,929	2,006	2,108	2,035
	50+	4,020	4,240	4,102	4,184
	Unkn	302	236	172	201
Santa Monica	19 <=	4,914	4,842	4,931	4,829
	20-24	7,476	8,157	8,253	8,101
	25-29	4,089	4,167	4,080	3,752
	30-34	2,295	2,523	2,469	2,219
	35-39	1,432	1,556	1,542	1,311
	40-49	1,569	1,716	1,632	1,340
	50+	2,354	3,124	2,983	2,657
	Unkn	.	.	.	.
Santa Rosa	19 <=	4,932	4,807	4,836	4,693
	20-24	5,420	5,804	5,769	5,603
	25-29	3,609	3,696	3,484	3,175
	30-34	3,471	3,491	3,227	2,689
	35-39	3,359	3,437	3,130	2,511
	40-49	5,006	5,175	5,012	3,792
	50+	4,768	4,793	4,767	4,049
	Unkn	38	13	57	6

Table 14: Fall Enrollment By Age

College/Center		1990	1991	1992	1993
Sequoias	19 <=	2,335	2,086	2,371	2,445
	20-24	2,379	2,663	2,610	2,484
	25-29	1,275	1,216	1,226	1,066
	30-34	1,127	1,134	1,143	850
	35-39	896	838	827	688
	40-49	1,071	1,007	992	807
	50+	579	379	364	286
	Unkn				
Shasta	19 <=	2,070	1,882	2,235	2,071
	20-24	1,848	1,844	2,090	1,982
	25-29	1,318	1,128	1,270	1,181
	30-34	1,381	1,207	1,356	1,174
	35-39	1,419	1,212	1,386	1,183
	40-49	1,792	1,565	1,962	1,670
	50+	1,562	849	1,778	1,055
	Unkn	71	10	72	27
Sierra	19 <=	3,021	3,413	3,772	3,615
	20-24	2,903	3,838	4,050	3,937
	25-29	1,327	1,607	1,661	1,482
	30-34	1,268	1,494	1,509	1,275
	35-39	1,108	1,366	1,418	1,214
	40-49	1,635	1,969	1,929	1,615
	50+	793	913	856	695
	Unkn				
Siskiyou	19 <=	.	707	655	624
	20-24	.	446	471	439
	25-29	.	241	263	245
	30-34	.	306	291	235
	35-39	.	388	360	290
	40-49	.	570	523	457
	50+	.	696	667	559
	Unkn				
Skyline	19 <=	1,465	1,427	1,488	1,531
	20-24	2,628	2,690	2,623	2,598
	25-29	1,340	1,376	1,338	1,159
	30-34	929	957	940	813
	35-39	698	709	680	574
	40-49	869	853	799	656
	50+	1,095	1,035	917	426
	Unkn	.	.	.	55
Solano	19 <=	2,313	2,253	2,243	2,069
	20-24	2,637	2,889	3,017	2,719
	25-29	1,866	1,762	1,701	1,340
	30-34	1,681	1,691	1,598	1,289
	35-39	1,407	1,405	1,341	1,100
	40-49	1,819	1,823	1,715	1,409
	50+	823	779	688	531
	Unkn				
Southwestern	19 <=	3,137	3,631	3,867	3,835
	20-24	4,430	5,098	5,804	5,620
	25-29	2,143	2,126	2,363	2,115
	30-34	1,525	1,558	1,820	1,474
	35-39	1,087	1,145	1,291	1,101
	40-49	1,403	1,447	1,614	1,342
	50+	587	566	602	493
	Unkn				

Table 14: Fall Enrollment By Age

College/Center		1990	1991	1992	1993
Taft	19 <=	299	.	316	381
	20-24	182	.	229	285
	25-29	136	.	131	155
	30-34	141	.	114	170
	35-39	100	.	109	115
	40-49	119	.	113	155
	50+	88	.	90	73
	Unkn	.	.	.	.
Ventura	19 <=	2,740	2,216	2,530	2,700
	20-24	3,048	3,127	3,287	2,899
	25-29	1,764	1,639	1,596	1,329
	30-34	1,509	1,430	1,306	1,030
	35-39	1,152	1,175	1,106	865
	40-49	1,440	1,438	1,422	1,076
	50+	860	796	740	574
	Unkn	.	.	.	1
Victor Valley	19 <=	1,947	2,145	1,940	1,954
	20-24	1,551	1,871	1,754	1,695
	25-29	1,215	1,314	1,163	1,112
	30-34	1,167	1,299	1,222	1,160
	35-39	893	1,003	1,026	1,031
	40-49	1,071	1,158	1,188	1,124
	50+	834	805	864	871
	Unkn	.	.	.	.
Vista	19 <=	144	155	196	340
	20-24	450	547	613	580
	25-29	629	694	646	511
	30-34	566	597	621	429
	35-39	573	521	492	349
	40-49	876	907	810	558
	50+	1,416	1,349	877	418
	Unkn	107	89	17	7
West Hills	19 <=	754	859	622	657
	20-24	514	710	718	720
	25-29	299	475	468	440
	30-34	261	406	409	359
	35-39	211	289	278	303
	40-49	240	300	315	263
	50+	112	171	155	180
	Unkn	12	14	43	15
West Valley	19 <=	3,099	2,947	2,903	2,819
	20-24	3,877	3,890	3,900	3,547
	25-29	2,012	1,952	1,712	1,565
	30-34	1,411	1,336	1,236	1,039
	35-39	1,095	1,095	972	928
	40-49	1,698	1,613	1,475	1,196
	50+	1,273	1,343	1,195	1,431
	Unkn	5	1,561	1,334	245
Yuba	19 <=	1,947	1,757	2,029	1,724
	20-24	2,174	2,156	2,496	2,242
	25-29	1,684	1,482	1,480	1,260
	30-34	1,458	1,316	1,399	1,152
	35-39	1,318	1,083	1,163	949
	40-49	1,571	1,443	1,537	1,197
	50+	973	634	728	461
	Unkn	44	61	101	32

Table 14: Fall Enrollment By Age

College/Center	1990	1991	1992	1993
<b>Estimated Statewide</b>				
19 <=	270,220	266,566	264,566	258,638
<b>Total</b>				
20-24	366,902	392,030	398,640	376,577
25-29	227,412	223,449	217,744	195,689
30-34	174,579	173,703	168,749	149,729
35-39	132,554	132,225	131,246	116,350
40-49	165,996	164,388	163,102	141,478
50+	157,812	147,602	142,853	128,335
Unkn	9,906	15,298	13,493	9,769

5

**Table 15**  
**FALL ENROLLMENT BY STATUS**

77

Table 15: Fall Enrollment By Status

College/Center		1990	1991	1992	1993
Alameda	First-time Student	54	886	1,319	1,421
	Transfer	37	1,134	1,151	829
	Returning Transfer	59	74	302	354
	Returning Student	3,339	1,182	711	679
	Continuing	2,635	2,874	2,408	2,293
	Unkn	1	28	77	82
Allan Hancock	First-time Student	2,115	1,808	1,749	1,946
	Transfer	1,155	1,247	3,198	2,050
	Returning Transfer	363	357	331	418
	Returning Student	2,585	2,610	2,782	2,846
	Continuing	3,886	4,422	4,560	4,357
	Unkn	3,249	3,087	3,306	3,778
American River	First-time Student	4,179	3,973	4,092	3,851
	Transfer	3,802	3,262	3,003	3,282
	Returning Transfer	1,265	1,179	1,216	1,111
	Returning Student	3,263	3,184	3,091	2,341
	Continuing	11,561	11,498	11,679	11,032
	Unkn	144	96	81	207
Antelope	First-time Student	2,285	1,769	1,637	1,386
	Transfer	1,075	971	919	602
	Returning Transfer	32	353	298	298
	Returning Student	2,275	2,070	1,265	1,651
	Continuing	4,078	4,724	6,340	5,397
	Unkn	339	342	386	396
Bakersfield	First-time Student	2,273	2,733	2,670	2,395
	Transfer	871	667	563	545
	Returning Transfer	296	292	270	1,200
	Returning Student	2,134	2,683	2,093	978
	Continuing	7,851	6,398	7,546	7,825
	Unkn	385	398	538	351
Barstow	First-time Student	589	998	828	642
	Transfer	489	1,065	533	360
	Returning Transfer	32	41	58	15
	Returning Student	641	765	796	436
	Continuing	1,092	1,050	1,051	1,002
	Unkn	115	60	34	62
Butte	First-time Student	2,425	2,174	2,426	2,348
	Transfer	1,337	1,249	513	534
	Returning Transfer	193	214	54	71
	Returning Student	3,054	2,474	2,511	2,039
	Continuing	5,623	5,643	5,882	5,764
	Unkn	570	427	521	557
Cabrillo	First-time Student	1,847	.	1,870	2,118
	Transfer	1,729	.	1,588	1,292
	Returning Transfer	540	.	524	332
	Returning Student	2,120	.	2,143	1,756
	Continuing	6,169	.	7,355	6,579
	Unkn	99	.	.	251
Canada	First-time Student	1,070	754	576	776
	Transfer	1,642	1,531	1,224	651
	Returning Transfer	82	773	526	552
	Returning Student	614	798	716	658
	Continuing	3,750	3,479	3,585	2,897
	Unkn	157	277	177	133

Table 15: Fall Enrollment By Status

College/Center		1990	1991	1992	1993
Canyons	First-time Student	1,646	1,388	1,337	1,237
	Transfer	665	951	900	762
	Returning Transfer	75	113	90	87
	Returning Student	595	352	403	324
	Continuing	3,460	3,641	3,850	3,973
	Unkn	61	88	90	103
Cerritos	First-time Student	4,993	5,009	5,120	4,436
	Transfer	1,491	1,527	1,560	1,244
	Returning Transfer	459	517	557	443
	Returning Student	1,953	2,109	2,006	1,772
	Continuing	11,150	11,524	12,600	12,020
	Unkn	1,060	912	907	974
Cerro Coso	First-time Student	844	936	917	834
	Transfer	372	474	443	363
	Returning Transfer	47	115	126	586
	Returning Student	734	1,082	944	398
	Continuing	2,743	2,347	2,400	2,220
	Unkn	286	218	447	453
Chabot	First-time Student	.	2,515	2,685	2,790
	Transfer	.	1,565	1,595	1,534
	Returning Transfer	.	1,253	267	180
	Returning Student	.	2,498	1,739	1,806
	Continuing	.	7,468	8,623	7,857
	Unkn	.	39	30	12
Chaffey	First-time Student	3,638	2,277	2,988	2,359
	Transfer	817	1,432	1,632	1,447
	Returning Transfer	1	376	504	341
	Returning Student	5,927	2,754	1,974	1,927
	Continuing	3,450	7,778	8,958	8,830
	Unkn	91	142	107	66
Citrus	First-time Student	64	1,926	2,404	1,684
	Transfer	32	1,424	1,538	955
	Returning Transfer	66	268	370	172
	Returning Student	454	914	1,090	880
	Continuing	9,511	5,657	6,891	6,596
	Unkn	1,420	1,574	1,370	945
Coastline	First-time Student	2,331	2,476	1,404	2,119
	Transfer	4,096	4,349	4,192	3,385
	Returning Transfer	1	4	3	4
	Returning Student	2,594	2,763	2,315	2,195
	Continuing	6,132	5,363	3,862	5,085
	Unkn	285	316	277	165
Columbia	First-time Student	578	618	818	609
	Transfer	210	159	283	119
	Returning Transfer	2	9	4	.
	Returning Student	1,065	1,188	792	408
	Continuing	1,386	1,238	1,395	1,161
	Unkn	123	194	89	56
Compton	First-time Student	1,045	1,091	1,069	672
	Transfer	360	526	540	352
	Returning Transfer	63	108	84	32
	Returning Student	885	892	358	218
	Continuing	2,085	2,494	3,131	3,072
	Unkn	631	556	514	213

Table 15: Fall Enrollment By Status

College/Center		1990	1991	1992	1993
Contra Costa	First-time Student	1,861	1,934	2,076	1,543
	Transfer	1,068	987	958	764
	Returning Transfer	224	223	205	199
	Returning Student	1,467	1,287	953	1,208
	Continuing	3,306	3,736	4,337	3,792
	Unkn	911	670	896	948
Cosumnes River	First-time Student	2,199	2,056	2,179	2,673
	Transfer	2,153	2,059	1,714	2,138
	Returning Transfer	720	1,283	234	565
	Returning Student	1,916	2,083	2,397	1,016
	Continuing	4,524	4,699	5,383	5,033
	Unkn	199	124	93	387
Crafton Hills	First-time Student	607	1,041	1,181	1,312
	Transfer	605	959	591	495
	Returning Transfer	279	460	333	128
	Returning Student	676	1,165	574	751
	Continuing	4,185	2,915	2,369	2,200
	Unkn	.	9	.	62
Cuesta	First-time Student	1,770	1,551	1,606	1,547
	Transfer	1,164	1,108	1,252	1,014
	Returning Transfer	175	157	172	123
	Returning Student	722	714	762	647
	Continuing	4,025	4,109	4,312	4,002
	Unkn	66	153	51	75
Cuyamaca	First-time Student	822	875	814	806
	Transfer	1,201	1,306	1,187	897
	Returning Transfer	197	289	311	270
	Returning Student	367	390	348	310
	Continuing	1,922	2,186	2,373	2,258
	Unkn	120	88	66	50
Cypress	First-time Student	2,546	2,466	2,913	3,786
	Transfer	1,860	1,957	2,292	2,408
	Returning Transfer	419	453	521	483
	Returning Student	1,265	1,191	1,481	1,696
	Continuing	8,069	8,321	7,335	5,282
	Unkn	3	.	139	236
De Anza	First-time Student	5,767	4,514	3,855	4,398
	Transfer	2,145	2,900	3,202	2,850
	Returning Transfer	1,531	1,996	1,191	1,119
	Returning Student	2,048	2,540	2,794	2,535
	Continuing	15,695	13,678	13,709	13,064
	Unkn	853	222	251	305
Desert	First-time Student	3,153	3,020	2,428	1,891
	Transfer	1,539	1,453	1,216	852
	Returning Transfer	309	357	269	193
	Returning Student	1,019	996	779	627
	Continuing	4,262	4,663	5,066	4,804
	Unkn	630	998	1,217	1,182
Diablo Valley	First-time Student	4,729	4,848	5,407	3,729
	Transfer	3,203	3,220	3,111	2,350
	Returning Transfer	885	929	1,029	803
	Returning Student	2,221	2,327	2,380	2,062
	Continuing	11,359	11,863	11,119	11,083
	Unkn	475	362	352	756



Table 15: Fall Enrollment By Status

College/Center		1990	1991	1992	1993
El Camino	First-time Student	5,380	4,721	4,116	4,184
	Transfer	3,488	3,055	2,687	2,254
	Returning Transfer	1,303	972	1,456	1,070
	Returning Student	3,146	2,598	2,432	2,279
	Continuing	13,237	13,880	14,500	13,793
	Unkn	366	275	130	144
Evergreen	First-time Student	2,890	3,098	2,872	2,406
	Transfer	329	318	280	188
	Returning Student	2,086	2,275	2,085	1,534
	Continuing	4,632	5,427	6,021	5,429
	Unkn	593	474	337	286
Feather River	First-time Student	360	384	341	294
	Transfer	300	87	160	130
	Returning Transfer	3	164	6	33
	Returning Student	79	172	290	108
	Continuing	488	530	260	416
	Unkn	84	82	207	62
Foothill	First-time Student	3,618	1,931	1,687	2,039
	Transfer	3,418	2,703	2,863	2,293
	Returning Transfer	1,692	1,835	1,095	617
	Returning Student	1,041	1,209	2,196	2,191
	Continuing	10,746	8,243	7,214	6,918
	Unkn	807	273	410	955
Fresno	First-time Student	.	3,931	4,576	3,885
	Transfer	.	1,639	1,795	912
	Returning Transfer	.	772	930	492
	Returning Student	.	3,035	4,087	1,991
	Continuing	.	9,807	7,822	9,675
	Unkn	.	150	124	1,044
Fullerton	First-time Student	3,730	3,181	2,580	4,526
	Transfer	2,118	2,210	2,013	2,417
	Returning Transfer	675	746	808	473
	Returning Student	1,853	1,786	1,868	2,635
	Continuing	11,610	12,206	10,710	8,621
	Unkn	133	1	2,922	115
Gavilan	First-time Student	992	783	445	777
	Transfer	590	456	105	449
	Returning Transfer	100	136	9	36
	Returning Student	763	449	130	479
	Continuing	2,073	2,344	1,025	2,316
	Unkn	76	86	17	97
Glendale	First-time Student	2,467	2,673	2,311	2,552
	Transfer	1,621	1,158	1,246	893
	Returning Transfer	274	178	157	164
	Returning Student	1,269	1,273	1,138	897
	Continuing	8,709	9,110	9,135	8,610
	Unkn	5,183	5,642	6,166	5,776
Golden West	First-time Student	1,920	2,959	2,873	2,777
	Transfer	4,144	3,927	3,450	2,800
	Returning Transfer	.	2	2	7
	Returning Student	2,162	1,967	1,908	1,517
	Continuing	7,022	6,702	7,003	6,800
	Unkn	163	115	72	68

Table 15: Fall Enrollment By Status

College/Center		1990	1991	1992	1993
Grossmont	First-time Student	3,157	2,743	2,699	2,656
	Transfer	2,970	2,630	2,408	1,953
	Returning Transfer	1,041	864	851	729
	Returning Student	1,584	1,137	973	942
	Continuing	9,021	10,265	9,789	8,827
	Unkn	67	89	60	90
Hartnell	First-time Student	1,948	1,496	1,789	1,468
	Transfer	849	982	1,058	350
	Returning Transfer	181	131	124	76
	Returning Student	1,787	1,937	2,888	1,084
	Continuing	5,570	5,660	5,551	3,563
	Unkn	111	181	425	224
Imperial Valley	First-time Student	.	284	489	931
	Transfer	.	61	168	91
	Returning Transfer	.	113	211	132
	Returning Student	.	375	502	538
	Continuing	.	1,807	4,923	4,630
	Unkn	.	14	106	123
Irvine Valley	First-time Student	1,004	1,238	1,358	1,380
	Transfer	1,801	2,244	1,885	1,503
	Returning Transfer	280	479	599	406
	Returning Student	1,022	1,052	905	576
	Continuing	5,089	5,435	5,099	5,663
	Unkn	322	371	483	347
Kings River	First-time Student	.	1,254	1,847	1,580
	Transfer	.	679	1,000	720
	Returning Transfer	.	110	219	184
	Returning Student	.	396	668	648
	Continuing	.	2,769	1,941	2,863
	Unkn	.	19	515	227
LA City	First-time Student	3,767	3,662	3,213	2,925
	Transfer	1,504	1,718	1,495	1,173
	Returning Transfer	885	748	613	549
	Returning Student	1,159	1,142	717	680
	Continuing	10,249	10,218	11,211	10,226
	Unkn	89	252	417	320
LA East	First-time Student	3,705	2,884	2,409	2,295
	Transfer	1,183	1,072	1,136	1,151
	Returning Transfer	706	545	573	474
	Returning Student	1,127	1,005	845	899
	Continuing	9,477	9,283	10,318	9,490
	Unkn	241	593	478	429
LA Harbor	First-time Student	2,172	1,820	2,075	1,389
	Transfer	1,230	1,255	1,098	814
	Returning Transfer	532	474	411	326
	Returning Student	1,180	1,019	838	528
	Continuing	4,811	5,507	5,597	4,903
	Unkn	276	251	385	363
LA ITV	First-time Student	36	17	13	11
	Transfer	153	247	379	224
	Returning Transfer	40	47	55	93
	Returning Student	81	20	100	42
	Continuing	68	183	123	81
	Unkn	2	4	6	11

Table 15: Fall Enrollment By Status

College/Center		1990	1991	1992	1993
LA Mission	First-time Student	2,430	2,234	1,871	1,323
	Transfer	727	896	819	504
	Returning Transfer	419	477	324	208
	Returning Student	409	384	241	200
	Continuing	3,346	4,141	4,609	3,918
	Unkn	132	254	306	276
LA Pierce	First-time Student	3,624	3,251	3,029	2,560
	Transfer	2,263	2,421	2,117	1,608
	Returning Transfer	1,149	817	909	585
	Returning Student	1,096	986	767	645
	Continuing	11,469	11,667	11,318	9,811
	Unkn	259	387	793	656
LA Southwest	First-time Student	2,205	2,145	1,215	1,370
	Transfer	496	579	450	444
	Returning Transfer	527	437	375	304
	Returning Student	424	466	372	397
	Continuing	3,083	3,604	3,565	3,197
	Unkn	210	68	146	119
LA Trade Tech	First-time Student	4,066	3,985	3,230	2,761
	Transfer	1,102	1,251	1,333	1,176
	Returning Transfer	827	784	701	557
	Returning Student	796	777	749	633
	Continuing	7,465	7,890	8,013	7,853
	Unkn	149	368	485	324
LA Valley	First-time Student	3,081	2,772	2,600	2,483
	Transfer	2,882	2,738	2,831	2,330
	Returning Transfer	999	852	820	652
	Returning Student	2,111	2,123	1,799	1,707
	Continuing	9,713	10,879	11,080	9,817
	Unkn	145	251	390	400
LA West	First-time Student	2,044	1,870	1,417	1,188
	Transfer	1,565	1,618	1,300	1,062
	Returning Transfer	1,216	946	805	577
	Returning Student	768	593	589	481
	Continuing	4,671	4,951	4,915	4,290
	Unkn	144	234	218	225
Lake Tahoe	First-time Student	536	516	429	375
	Transfer	451	435	445	353
	Returning Transfer	53	28	11	3
	Returning Student	853	707	733	601
	Continuing	462	1,014	1,069	1,024
	Unkn	47	46	19	85
Laney	First-time Student	1,749	1,415	2,428	2,509
	Transfer	1,504	1,967	2,303	1,464
	Returning Transfer	147	190	550	476
	Returning Student	1,916	2,019	1,308	1,323
	Continuing	5,090	5,976	4,799	5,103
	Unkn	62	80	193	262
Las Positas	First-time Student	.	930	914	912
	Transfer	.	855	676	631
	Returning Transfer	.	194	146	160
	Returning Student	.	886	609	653
	Continuing	.	2,950	3,262	3,120
	Unkn	.	89	51	59

Table 15: Fall Enrollment By Status

College/Center		1990	1991	1992	1993
Lassen	First-time Student	747	663	663	669
	Transfer	281	248	271	217
	Returning Transfer	41	19	18	30
	Returning Student	602	530	597	371
	Continuing	1,478	1,604	1,319	1,097
	Unkn	293	477	491	404
Long Beach	First-time Student	4,952	5,175	3,851	4,636
	Transfer	2,921	1,870	1,531	2,082
	Returning Transfer	570	681	565	332
	Returning Student	4,883	3,793	3,222	3,173
	Continuing	13,863	13,048	13,354	11,841
	Unkn	730	346	761	246
Los Medanos	First-time Student	2,353	2,222	2,363	1,449
	Transfer	1,440	1,335	1,239	1,015
	Returning Transfer	237	185	320	243
	Returning Student	1,252	882	1,157	1,059
	Continuing	3,454	3,779	3,296	3,509
	Unkn	582	485	164	206
Marin	First-time Student	.	1,000	1,183	1,051
	Transfer	.	1,463	1,662	1,305
	Returning Transfer	.	207	229	200
	Returning Student	.	790	940	665
	Continuing	.	6,322	6,352	5,791
	Unkn	.	138	211	213
Marin CED	Continuing	.	180	151	156
	Unkn	.	2,892	2,469	3,034
Mendocino	First-time Student	890	777	825	641
	Transfer	558	483	490	314
	Returning Transfer	81	87	78	47
	Returning Student	1,208	1,298	1,066	681
	Continuing	1,859	2,020	2,106	1,617
	Unkn	208	249	227	191
Merced	First-time Student	1,880	1,818	1,702	1,338
	Transfer	581	680	596	464
	Returning Transfer	500	549	489	163
	Returning Student	1,289	1,176	904	1,422
	Continuing	3,715	4,233	4,681	4,180
	Unkn	3,060	3,097	2,837	2,954
Merritt	First-time Student	1,372	977	1,387	1,247
	Transfer	1,010	1,438	1,536	938
	Returning Transfer	123	190	280	255
	Returning Student	1,169	1,231	744	645
	Continuing	2,768	3,089	2,491	2,359
	Unkn	229	92	54	45
Mira Costa	First-time Student	5,449	4,538	3,724	3,772
	Transfer	3,765	2,468	2,396	1,891
	Returning Transfer	166	278	304	206
	Returning Student	1,037	1,116	1,372	989
	Continuing	4,188	4,834	5,334	5,947
	Unkn	383	338	558	182

Table 15: Fall Enrollment By Status

College/Center		1990	1991	1992	1993
Mission	First-time Student	1,735	1,477	1,601	1,677
	Transfer	2,570	2,533	2,146	1,746
	Returning Transfer	441	425	260	189
	Returning Student	1,271	1,387	1,485	929
	Continuing	4,797	5,553	5,713	5,447
	Unkn	308	1,093	897	667
Modesto	First-time Student	2,877	2,755	3,824	3,563
	Transfer	469	723	850	789
	Returning Transfer	33	59	51	23
	Returning Student	5,001	3,004	3,029	2,774
	Continuing	4,940	9,320	8,386	8,133
	Unkn	149	405	259	198
Monterey Peninsula	First-time Student	.	1,023	1,384	416
	Transfer	.	987	1,713	847
	Returning Transfer	.	279	511	296
	Returning Student	.	862	1,434	780
	Continuing	.	2,829	3,925	5,903
	Unkn	.	392	611	318
Moorpark	First-time Student	3,704	3,571	823	2,982
	Transfer	50	35	384	505
	Returning Transfer	2	3	14	12
	Returning Student	3,927	3,953	1,836	1,155
	Continuing	4,060	4,369	8,995	6,216
	Unkn	.	.	8	122
Mt San Antonio	First-time Student	4,981	4,426	3,892	3,588
	Transfer	2,758	2,360	2,233	1,541
	Returning Transfer	1,299	856	910	611
	Returning Student	2,067	2,199	2,516	1,713
	Continuing	12,881	13,878	14,021	15,210
	Unkn	11,448	9,361	7,577	6,847
Mt San Jacinto	First-time Student	2,600	3,235	2,222	1,697
	Transfer	1,725	71	512	799
	Returning Transfer	162	5	.	12
	Returning Student	920	1,452	1,510	1,627
	Continuing	2,471	3,382	3,981	3,710
	Unkn	70	17	.	63
Napa	First-time Student	.	1,093	1,981	2,145
	Transfer	.	1,017	619	430
	Returning Transfer	.	98	61	36
	Returning Student	.	3,448	3,104	919
	Continuing	.	1,960	1,986	3,864
	Unkn	.	175	182	211
North Orange Adult	First-time Student	.	.	465	701
	Transfer	.	.	14	11
	Returning Transfer	.	.	27	11
	Returning Student	.	.	318	243
	Continuing	.	.	3,429	2,589
	Unkn	28,115	25,272	20,733	16,115
Ohlone	First-time Student	1,761	1,988	1,924	1,679
	Transfer	1,487	1,833	1,473	1,012
	Returning Transfer	195	265	245	141
	Returning Student	1,240	1,453	1,350	1,068
	Continuing	4,164	4,621	4,982	4,642
	Unkn	116	113	120	153

Table 15: Fall Enrollment By Status

College/Center		1990	1991	1992	1993
Orange Coast	First-time Student	3,016	4,374	4,047	3,766
	Transfer	6,462	5,516	4,591	3,799
	Returning Transfer	.	.	3	3
	Returning Student	3,730	3,569	3,307	3,113
	Continuing	12,788	12,634	12,844	12,100
	Unkn	205	165	173	162
Oxnard	First-time Student	1,879	1,440	644	1,200
	Transfer	30	23	15	101
	Returning Transfer	3	6	10	6
	Returning Student	2,560	2,582	1,302	738
	Continuing	2,162	2,125	4,601	3,340
	Unkn	.	.	6	101
Palo Verde	First-time Student	229	177	417	390
	Transfer	69	214	637	561
	Returning Transfer	17	19	10	61
	Returning Student	175	178	231	248
	Continuing	396	356	362	331
	Unkn	256	269	246	267
Palomar	First-time Student	3,139	3,189	4,627	4,421
	Transfer	3,102	2,996	2,666	2,373
	Returning Transfer	337	314	250	225
	Returning Student	3,660	3,578	3,909	4,521
	Continuing	9,609	11,278	12,577	11,443
	Unkn	941	1,252	1,200	944
Pasadena	First-time Student	3,455	4,745	4,261	5,271
	Transfer	740	2,142	4,511	2,811
	Returning Transfer	1,039	860	382	330
	Returning Student	3,561	2,837	1,863	1,844
	Continuing	6,951	15,407	16,552	13,426
	Unkn	2,358	3,627	1,599	775
Porterville	First-time Student	434	562	586	534
	Transfer	624	155	227	134
	Returning Transfer	58	75	79	266
	Returning Student	547	505	482	266
	Continuing	2,165	1,675	1,733	1,740
	Unkn	81	184	111	92
Rancho Santiago	First-time Student	4,766	5,202	4,341	3,716
	Transfer	5,570	5,435	3,732	3,147
	Returning Transfer	1,478	1,783	1,503	1,948
	Returning Student	5,265	6,184	5,364	4,681
	Continuing	12,896	14,582	16,118	13,692
	Unkn	229	492	204	187
Rancho Santiago CED	First-time Student	9,968	9,102	7,964	7,829
	Returning Student	1,658	1,783	1,427	1,836
	Continuing	7,605	7,207	8,407	8,681
	Unkn	689	841	140	341
Redwoods	First-time Student	2,108	1,677	1,364	1,646
	Transfer	872	614	839	752
	Returning Transfer	249	940	273	98
	Returning Student	1,587	880	1,272	889
	Continuing	3,998	3,794	3,897	3,454
	Unkn	16	254	175	318

Table 15: Fall Enrollment By Status

College/Center		1990	1991	1992	1993
Rio Hondo	First-time Student	3,351	698	2,763	3,701
	Transfer	1,641	210	1,111	1,324
	Returning Transfer	317	32	234	206
	Returning Student	3,802	1,980	2,338	1,968
	Continuing	6,825	7,035	6,648	7,425
	Unkn	269	2,804	134	215
Riverside	First-time Student	4,188	4,125	3,780	1,425
	Transfer	1,895	1,962	1,670	705
	Returning Transfer	552	505	443	216
	Returning Student	2,395	1,954	1,514	843
	Continuing	10,865	12,245	13,814	16,808
	Unkn	841	1,022	1,441	1,078
SF Center	First-time Student	12,423	10,889	9,682	8,146
	Transfer	.	1	.	680
	Returning Transfer	.	.	.	652
	Returning Student	5,528	5,991	5,859	4,966
	Continuing	19,820	17,708	18,300	17,265
	Unkn	.	.	.	161
SF City	First-time Student	3,852	3,529	3,723	3,648
	Transfer	4,591	5,056	3,769	2,699
	Returning Transfer	2,697	2,845	2,438	2,002
	Returning Student	1,817	1,549	1,390	1,393
	Continuing	16,631	16,394	18,129	17,050
	Unkn	183	782	841	882
Sacramento City	First-time Student	2,799	2,431	2,504	3,484
	Transfer	2,995	2,813	2,557	3,180
	Returning Transfer	1,228	1,869	1,120	1,485
	Returning Student	2,402	2,901	3,011	1,611
	Continuing	10,039	8,820	9,444	8,733
	Unkn	95	71	83	164
Saddleback	First-time Student	2,173	2,846	2,590	2,617
	Transfer	2,816	3,036	2,599	1,969
	Returning Transfer	528	631	725	598
	Returning Student	2,903	2,969	2,890	2,161
	Continuing	15,162	14,618	14,298	14,131
	Unkn	276	352	637	261
San Bernardino	First-time Student	1,249	2,375	1,717	1,809
	Transfer	1,221	1,886	1,267	1,437
	Returning Transfer	549	976	506	434
	Returning Student	1,202	2,432	1,717	1,462
	Continuing	9,456	6,781	5,088	5,566
	Unkn	.	.	.	142
San Diego Adult	First-time Student	.	14,415	13,646	13,653
	Returning Student	.	6,291	6,584	6,333
	Continuing	.	14,832	14,549	15,308
San Diego City	First-time Student	1,840	1,432	1,978	1,858
	Transfer	2,187	1,661	1,711	1,468
	Returning Transfer	465	209	207	311
	Returning Student	2,653	3,452	2,373	1,982
	Continuing	6,712	7,350	8,335	7,716
	Unkn	928	1,001	43	204

Table 15: Fall Enrollment By Status

College/Center		1990	1991	1992	1993
San Diego Mesa	First-time Student	2,853	2,162	3,298	2,274
	Transfer	3,659	2,492	2,681	2,749
	Returning Transfer	594	246	277	610
	Returning Student	4,086	4,672	3,317	2,749
	Continuing	11,630	12,447	12,922	11,892
	Unkn	1,348	1,047	83	1,029
San Diego Miramar	First-time Student	783	700	1,010	909
	Transfer	1,063	797	875	910
	Returning Transfer	270	102	153	292
	Returning Student	1,645	2,189	1,934	1,305
	Continuing	3,576	3,920	4,337	4,110
	Unkn	477	560	34	197
San Joaquin Delta	First-time Student	5,663	4,948	4,567	4,972
	Transfer	1,944	1,504	1,229	958
	Returning Transfer	869	915	890	664
	Returning Student	3,287	3,299	2,946	2,647
	Continuing	8,279	8,563	8,324	8,065
	Unkn	389	345	58	67
San Jose	First-time Student	3,080	3,732	3,018	2,957
	Transfer	598	505	381	256
	Returning Student	2,131	2,422	1,813	1,764
	Continuing	4,413	5,247	5,380	5,329
	Unkn	611	707	75	116
San Mateo	First-time Student	2,559	2,071	1,685	1,980
	Transfer	3,107	2,501	2,003	1,239
	Returning Transfer	472	1,393	1,256	951
	Returning Student	1,316	1,627	1,382	1,341
	Continuing	7,791	7,715	7,278	6,612
	Unkn	114	186	132	138
Santa Barbara	First-time Student	2,084	2,183	2,120	1,993
	Transfer	1,521	1,470	1,478	1,249
	Returning Transfer	235	273	270	206
	Returning Student	1,420	1,361	1,462	1,084
	Continuing	6,222	6,385	6,914	6,500
	Unkn	242	393	341	237
Santa Barbara CED	First-time Student	.	4,152	3,623	3,159
	Returning Student	.	5,406	5,583	5,490
	Continuing	.	1,933	1,994	2,270
	Unkn	11,336	.	.	.
Santa Monica	First-time Student	3,759	3,951	3,854	3,865
	Transfer	3,454	3,630	3,277	2,650
	Returning Transfer	913	1,084	1,081	855
	Returning Student	2,095	2,459	2,621	2,241
	Continuing	13,568	12,150	12,797	12,451
	Unkn	340	2,811	2,260	2,147
Santa Rosa	First-time Student	4,500	5,004	4,646	3,945
	Transfer	3,049	2,917	2,456	1,875
	Returning Transfer	670	704	597	426
	Returning Student	5,731	5,665	5,343	4,419
	Continuing	16,147	16,348	16,700	15,209
	Unkn	506	578	540	644



Table 15: Fall Enrollment By Status

College/Center		1990	1991	1992	1993
Sequoias	First-time Student	2,068	1,994	1,993	1,986
	Transfer	790	789	797	552
	Returning Transfer	280	387	316	210
	Returning Student	1,612	1,598	1,349	1,026
	Continuing	4,797	4,451	4,914	4,646
	Unkn	115	104	164	206
Shasta	First-time Student	1,610	2,017	2,267	1,907
	Transfer	378	751	950	720
	Returning Transfer	63	39	23	23
	Returning Student	1,539	1,952	2,387	2,197
	Continuing	5,194	4,548	5,756	5,118
	Unkn	2,677	390	766	378
Sierra	First-time Student	2,511	2,919	3,252	2,689
	Transfer	1,803	2,098	2,129	1,677
	Returning Transfer	298	381	404	234
	Returning Student	1,616	1,892	1,487	1,758
	Continuing	5,824	7,310	7,921	7,250
	Unkn	3	.	2	225
Siskiyou	First-time Student	.	430	404	375
	Transfer	.	231	199	181
	Returning Transfer	.	58	48	37
	Returning Student	.	1,016	832	735
	Continuing	.	1,314	1,552	1,323
	Unkn	.	305	195	198
Skyline	First-time Student	1,614	1,116	949	1,312
	Transfer	2,094	1,623	1,383	964
	Returning Transfer	69	754	613	605
	Returning Student	663	963	865	734
	Continuing	4,563	4,507	4,888	4,122
	Unkn	21	84	87	75
Solano	First-time Student	2,300	2,587	1,879	1,614
	Transfer	1,558	1,043	1,321	964
	Returning Transfer	163	152	253	244
	Returning Student	2,259	2,319	1,920	1,487
	Continuing	6,176	6,330	6,834	6,041
	Unkn	90	171	96	107
Southwestern	First-time Student	2,672	3,612	4,370	4,095
	Transfer	1,530	1,925	403	151
	Returning Transfer	1,277	990	.	.
	Returning Student	1,152	530	2,661	2,215
	Continuing	7,681	8,514	9,866	9,486
	Unkn	.	.	61	33
Taft	First-time Student	331	.	314	348
	Transfer	62	.	89	193
	Returning Transfer	20	.	9	19
	Returning Student	191	.	204	179
	Continuing	443	.	446	546
	Unkn	19	.	40	50
Ventura	First-time Student	2,613	2,187	850	2,341
	Transfer	229	208	352	291
	Returning Transfer	26	10	7	10
	Returning Student	4,914	4,934	2,154	1,660
	Continuing	4,731	4,502	8,606	5,974
	Unkn	.	.	18	198

Table 15: Fall Enrollment By Status

College/Center		1990	1991	1992	1993
Victor Valley	First-time Student	2,299	2,353	2,121	1,735
	Transfer	786	870	94	606
	Returning Transfer	98	109	70	108
	Returning Student	1,222	1,231	1,511	1,152
	Continuing	3,673	4,464	5,027	4,812
	Unkn	600	568	334	534
Vista	First-time Student	641	294	627	642
	Transfer	1,092	1,320	1,337	716
	Returning Transfer	60	124	154	109
	Returning Student	831	917	570	365
	Continuing	2,126	2,168	1,501	1,154
	Unkn	11	36	83	206
West Hills	First-time Student	377	856	870	1,038
	Transfer	95	274	285	329
	Returning Transfer	3	97	102	100
	Returning Student	352	231	276	253
	Continuing	885	1,244	1,197	634
	Unkn	691	522	278	583
West Valley	First-time Student	2,480	2,379	2,357	2,085
	Transfer	1,767	2,064	1,962	1,527
	Returning Transfer	403	552	400	312
	Returning Student	1,836	1,932	1,412	1,126
	Continuing	7,274	6,916	7,017	6,345
	Unkn	710	1,894	1,579	1,375
Yuba	First-time Student	2,113	2,153	2,097	1,557
	Transfer	910	1,175	1,403	847
	Returning Transfer	260	307	409	345
	Returning Student	2,578	1,894	1,904	1,908
	Continuing	4,894	4,097	4,694	4,134
	Unkn	414	306	426	226
<b>Estimated Statewide Total</b>	<b>First-time Student</b>	<b>257,391</b>	<b>277,549</b>	<b>269,813</b>	<b>261,007</b>
	<b>Transfer</b>	<b>157,725</b>	<b>162,134</b>	<b>157,049</b>	<b>128,611</b>
	<b>Returning Transfer</b>	<b>41,774</b>	<b>49,161</b>	<b>42,486</b>	<b>37,470</b>
	<b>Returning Student</b>	<b>188,432</b>	<b>205,497</b>	<b>191,284</b>	<b>161,275</b>
	<b>Continuing</b>	<b>640,575</b>	<b>711,151</b>	<b>756,054</b>	<b>714,878</b>
	<b>Unkn</b>	<b>239,484</b>	<b>109,769</b>	<b>83,707</b>	<b>73,324</b>

**Table 16**

**FALL ENROLLMENT BY ETHNICITY**

Table 16: Fall Enrollment By Educational Level

College/Center		1990	1991	1992	1993
Alameda	Freshman	4,287	4,175	4,138	3,883
	Sophomore	628	701	735	797
	AA Degree	274	263	235	242
	BA Degree	693	733	527	286
	Other	233	271	243	340
	Spec Admit K-12	.	28	78	98
	Unkn	10	7	12	12
Allan Hancock	Freshman	8,156	8,489	7,461	6,403
	Sophomore	150	133	1,449	1,167
	AA Degree	885	769	1,168	1,048
	BA Degree	847	831	1,538	626
	Other	53	67	561	482
	Spec Admit K-12	77	118	126	88
	Unkn	3,185	3,124	3,623	5,581
American River	Freshman	14,759	13,870	13,736	13,289
	Sophomore	3,360	3,642	3,571	3,572
	AA Degree	2,263	1,817	1,777	1,899
	BA Degree	1,931	1,928	1,975	1,252
	Other	1,273	1,471	1,621	1,570
	Spec Admit K-12	90	82	62	84
	Unkn	538	382	420	158
Antelope	Freshman	7,864	7,729	8,042	6,924
	Sophomore	913	1,052	1,237	1,454
	AA Degree	369	431	457	369
	BA Degree	378	395	401	194
	Other	221	280	322	393
	Spec Admit K-12	339	342	386	396
	Bakersfield	Freshman	8,023	8,255	8,521
Sophomore		2,298	2,025	2,218	2,142
AA Degree		886	909	887	807
BA Degree		862	753	722	427
Other		947	670	802	975
Spec Admit K-12		339	246	302	250
Unkn		455	313	228	81
Barstow	Freshman	1,873	2,661	2,461	1,963
	Sophomore	356	317	229	245
	AA Degree	190	368	281	128
	BA Degree	243	437	243	41
	Other	181	136	52	78
	Spec Admit K-12	115	60	34	62
	Butte	Freshman	8,634	7,611	7,600
Sophomore		2,085	2,163	2,141	2,046
AA Degree		101	84	.	.
BA Degree		226	224	.	.
Other		1,574	1,635	1,633	1,632
Spec Admit K-12		567	427	521	557
Unkn		15	37	12	82
Cabrillo	Freshman	7,574	.	9,864	7,672
	Sophomore	3,034	.	2,326	1,871
	AA Degree	8	.	7	482
	BA Degree	13	.	24	1,199
	Other	1,472	.	1,049	852
	Spec Admit K-12	133	.	162	251
	Unkn	268	13,558	48	1

Table 16: Fall Enrollment By Educational Level

College/Center		1990	1991	1992	1993
Canada	Freshman	3,697	3,609	3,257	3,061
	Sophomore	734	791	765	759
	AA Degree	437	476	449	406
	BA Degree	1,723	1,882	1,647	846
	Other	388	470	438	376
	Spec Admit K-12	126	277	177	172
	Unkn	168	107	71	47
Canyons	Freshman	2,627	4,060	4,452	4,091
	Sophomore	876	1,062	975	1,230
	AA Degree	225	379	336	337
	BA Degree	358	431	411	202
	Other	394	375	348	520
	Spec Admit K-12	61	88	90	103
	Unkn	1,961	138	58	3
Cerritos	Freshman	12,168	14,400	15,580	14,322
	Sophomore	3,488	3,334	3,374	3,277
	AA Degree	423	444	504	458
	BA Degree	950	937	979	387
	Other	2,610	2,390	2,225	2,208
	Spec Admit K-12	636	82	80	81
	Unkn	831	11	8	156
Cerro Coso	Freshman	2,892	3,289	3,209	3,038
	Sophomore	408	367	393	410
	AA Degree	432	497	460	431
	BA Degree	581	701	651	337
	Other	127	75	101	129
	Spec Admit K-12	280	182	399	160
	Unkn	306	51	64	349
Chabot	Freshman	.	9,531	8,974	8,892
	Sophomore	.	2,671	2,795	2,530
	AA Degree	.	607	641	764
	BA Degree	.	921	956	597
	Other	.	1,565	1,538	1,360
	Spec Admit K-12	.	43	35	35
	Unkn	18,791			1
Chaffey	Freshman	4,648	8,713	12,025	10,819
	Sophomore	378	2,072	1,606	2,151
	AA Degree	263	481	514	499
	BA Degree	341	542	553	276
	Other	200	987	305	1,039
	Spec Admit K-12	110	159	108	66
	Unkn	7,984	1,805	1,052	120
Citrus	Freshman	.	.	.	7,721
	Sophomore	.	.	.	1,603
	AA Degree	.	.	.	539
	BA Degree	.	.	.	194
	Other	.	.	.	418
	Spec Admit K-12	.	356	150	92
	Unkn	11,547	11,407	13,513	665
Coastline	Freshman	10,576	9,863	7,589	7,890
	Sophomore	600	546	429	467
	AA Degree	579	680	653	1,011
	BA Degree	1,943	2,237	2,410	1,463
	Other	194	164	151	134
	Spec Admit K-12	285	318	279	165
	Unkn	1,262	1,463	3,528	1,823

Table 16: Fall Enrollment By Educational Level

College/Center		1990	1991	1992	1993
Columbia	Freshman	1,866	1,826	1,892	1,367
	Sophomore	316	353	383	376
	AA Degree	200	196	220	131
	BA Degree	545	447	412	151
	Other	150	201	185	159
	Spec Admit K-12	141	213	107	85
	Unkn	146	170	182	84
Compton	Freshman	3,327	3,775	3,742	2,960
	Sophomore	586	716	783	774
	AA Degree	142	115	121	105
	BA Degree	94	144	114	39
	Other	302	371	427	483
	Spec Admit K-12	618	546	508	124
	Unkn	.	.	1	74
Contra Costa	Freshman	4,787	4,872	5,211	4,575
	Sophomore	877	943	1,066	1,089
	AA Degree	457	482	451	415
	BA Degree	1,188	1,230	1,120	557
	Other	522	563	633	768
	Spec Admit K-12	911	670	896	906
	Unkn	95	77	48	144
Cosumnes River	Freshman	7,887	8,141	8,113	8,153
	Sophomore	1,031	1,194	1,250	1,413
	AA Degree	1,067	1,025	838	815
	BA Degree	1,179	1,347	1,130	494
	Other	322	459	455	523
	Spec Admit K-12	181	104	71	342
	Unkn	44	34	143	72
Crafton Hills	Freshman	4,518	3,642	3,568	3,605
	Sophomore	466	568	680	588
	AA Degree	600	390	268	285
	BA Degree	434	274	273	133
	Other	55	105	223	145
	Spec Admit K-12	52	41	.	59
	Unkn	227	1,529	36	133
Cuesta	Freshman	5,410	5,151	5,443	5,156
	Sophomore	1,037	1,150	1,197	1,137
	AA Degree	388	392	409	365
	BA Degree	396	454	479	211
	Other	360	370	421	462
	Spec Admit K-12	63	58	50	74
	Unkn	268	217	156	3
Cuyamaca	Freshman	3,098	3,523	3,485	3,008
	Sophomore	513	581	582	615
	AA Degree	259	261	244	244
	BA Degree	375	355	341	169
	Other	264	326	381	305
	Spec Admit K-12	120	88	66	33
	Unkn	.	.	.	217
Cypress	Freshman	9,263	8,809	9,643	9,026
	Sophomore	2,336	2,290	2,409	2,609
	AA Degree	16	481	550	586
	BA Degree	21	788	795	407
	Other	2,526	1,926	1,131	1,120
	Spec Admit K-12	.	59	47	28
	Unkn	.	35	106	115

Table 16: Fall Enrollment By Educational Level

College/Center		1990	1991	1992	1993
De Anza	Freshman	9,886	10,172	11,359	11,841
	Sophomore	2,254	3,350	3,941	4,219
	AA Degree	1,345	1,381	1,485	1,562
	BA Degree	4,620	4,711	4,351	2,717
	Other	823	1,422	2,019	2,369
	Spec Admit K-12	854	223	252	306
	Unkn	8,257	4,591	1,595	1,257
Desert	Freshman	8,358	7,956	8,022	6,755
	Sophomore	774	1,486	1,138	1,292
	AA Degree	413	508	465	431
	BA Degree	779	794	684	356
	Other	261	534	443	544
	Spec Admit K-12	91	133	183	155
	Unkn	236	76	40	16
Diablo Valley	Freshman	13,255	13,622	13,105	10,679
	Sophomore	3,211	3,351	3,661	4,006
	AA Degree	1,066	1,108	1,223	1,064
	BA Degree	3,362	3,554	3,496	1,431
	Other	1,180	1,353	1,398	2,074
	Spec Admit K-12	475	362	352	753
	Unkn	323	199	163	776
El Camino	Freshman	17,364	16,091	15,414	15,140
	Sophomore	3,860	4,053	4,259	4,477
	AA Degree	1,222	1,060	1,092	991
	BA Degree	2,462	2,319	2,251	1,055
	Other	1,282	1,448	1,705	1,917
	Spec Admit K-12	710	530	600	144
	Unkn	20	.	.	.
Evergreen	Freshman	4,874	7,605	9,788	8,687
	Sophomore	99	154	267	241
	AA Degree	317	424	107	87
	BA Degree	.	.	93	71
	Other	87	147	257	225
	Spec Admit K-12	593	474	337	243
	Unkn	4,560	2,788	746	289
Feather River	Freshman	826	938	827	361
	Sophomore	87	88	95	.
	AA Degree	82	80	80	.
	BA Degree	192	205	118	.
	Other	19	14	16	.
	Spec Admit K-12	66	81	100	31
	Unkn	42	13	28	651
Foothill	Freshman	6,645	5,478	6,051	6,862
	Sophomore	1,250	1,367	1,441	1,690
	AA Degree	1,080	838	960	896
	BA Degree	6,097	4,820	4,865	3,125
	Other	683	764	755	854
	Spec Admit K-12	812	282	410	955
	Unkn	4,755	2,645	983	631
Fresno	Freshman	.	10,405	12,183	5,605
	Sophomore	.	5,291	3,464	1,072
	AA Degree	.	.	567	477
	BA Degree	.	.	834	219
	Other	.	3,637	2,037	569
	Spec Admit K-12	.	1	120	20
	Unkn	17,122	.	129	10,037

Table 16: Fall Enrollment By Educational Level

College/Center		1990	1991	1992	1993
Fullerton	Freshman	12,268	11,890	13,303	12,038
	Sophomore	3,645	3,449	3,576	3,579
	AA Degree	9	599	789	740
	BA Degree	17	1,029	1,394	552
	Other	4,040	2,970	1,636	1,684
	Spec Admit K-12	127	159	159	161
	Unkn	13	34	44	33
Gavilan	Freshman	3,024	2,747	1,105	2,661
	Sophomore	569	601	342	626
	AA Degree	304	255	45	295
	BA Degree	448	335	65	224
	Other	173	221	158	247
	Spec Admit K-12	76	84	16	97
	Unkn	.	11	.	4
Glendale	Freshman	17,434	12,845	13,443	12,707
	Sophomore	.	2,587	2,098	2,467
	AA Degree	405	423	434	401
	BA Degree	1,345	1,021	993	504
	Other	.	1,575	1,318	1,398
	Spec Admit K-12	324	207	234	246
	Unkn	15	1,376	1,633	1,169
Golden West	Freshman	10,227	10,143	9,889	9,271
	Sophomore	1,845	1,895	1,820	1,875
	AA Degree	667	795	838	722
	BA Degree	1,399	1,643	1,531	659
	Other	875	837	748	745
	Spec Admit K-12	163	132	84	78
	Unkn	235	227	398	511
Grossmont	Freshman	11,145	10,801	9,963	9,025
	Sophomore	3,118	3,209	3,161	2,843
	AA Degree	733	724	641	592
	BA Degree	1,009	964	988	537
	Other	1,768	1,965	1,967	1,867
	Spec Admit K-12	67	65	60	76
	Unkn				257
Hartnell	Freshman	5,462	5,326	6,461	4,285
	Sophomore	910	1,044	955	1,033
	AA Degree	781	846	1,069	447
	BA Degree	2,069	2,141	2,448	335
	Other	445	544	444	475
	Spec Admit K-12	148	158	204	189
	Unkn	631	328	254	1
Imperial Valley	Freshman	.	1,667	4,816	2,705
	Sophomore	.	609	931	638
	Other	.	350	488	291
	Spec Admit K-12	.	18	133	89
	Unkn	6,942	4,061	31	2,725
Irvine Valley	Freshman	6,270	4,729	6,037	6,584
	Sophomore	522	182	1,007	828
	AA Degree	472	476	549	516
	BA Degree	1,846	1,671	2,013	1,197
	Other	100	43	358	229
	Spec Admit K-12	225	273	300	320
	Unkn	83	3,445	65	201



Table 16: Fall Enrollment By Educational Level

College/Center		1990	1991	1992	1993
Kings River	Freshman	.	1,162	4,280	1,729
	Sophomore	.	405	342	159
	AA Degree	.	35	166	93
	BA Degree	.	52	235	48
	Other	.	203	184	64
	Spec Admit K-12	.	33	118	23
	Unkn	4,424	3,337	865	4,106
LA City	Freshman	11,447	11,282	9,634	8,858
	Sophomore	2,051	2,185	3,149	3,063
	AA Degree	702	751	735	686
	BA Degree	1,345	1,478	1,337	501
	Other	1,137	1,204	1,906	2,051
	Spec Admit K-12	145	321	417	320
	Unkn	826	519	488	394
LA East	Freshman	10,663	9,765	9,011	8,258
	Sophomore	2,229	2,264	2,977	2,994
	AA Degree	637	651	695	648
	BA Degree	664	627	561	238
	Other	1,080	1,146	1,724	1,888
	Spec Admit K-12	636	609	478	427
	Unkn	530	320	313	285
LA Harbor	Freshman	6,159	6,287	5,829	4,947
	Sophomore	1,207	1,223	1,493	1,548
	AA Degree	379	431	419	344
	BA Degree	840	932	772	279
	Other	513	526	675	710
	Spec Admit K-12	294	352	385	363
	Unkn	809	575	831	132
LA ITV	Freshman	239	336	279	210
	Sophomore	22	50	153	111
	AA Degree	30	40	79	56
	BA Degree	80	73	90	22
	Other	2	13	67	50
	Spec Admit K-12	3	6	6	11
	Unkn	4	.	2	2
LA Mission	Freshman	4,407	5,095	4,489	3,734
	Sophomore	455	611	1,134	1,111
	AA Degree	235	290	323	233
	BA Degree	418	597	526	197
	Other	135	197	417	438
	Spec Admit K-12	236	341	306	275
	Unkn	1,577	1,255	975	441
LA Pierce	Freshman	13,315	12,721	10,678	9,106
	Sophomore	2,691	2,628	3,338	3,169
	AA Degree	737	751	730	646
	BA Degree	1,676	1,750	1,731	664
	Other	1,007	1,060	1,603	1,565
	Spec Admit K-12	313	544	793	618
	Unkn	121	75	60	96
LA Southwest	Freshman	5,277	5,628	3,799	3,636
	Sophomore	638	705	1,138	1,113
	AA Degree	143	239	246	242
	BA Degree	150	184	154	87
	Other	272	303	607	612
	Spec Admit K-12	432	201	146	119
	Unkn	33	39	33	22

Table 16: Fall Enrollment By Educational Level

College/Center		1990	1991	1992	1993
LA Trade Tech	Freshman	10,445	10,756	8,718	7,888
	Sophomore	1,542	1,428	2,543	2,593
	AA Degree	532	630	641	577
	BA Degree	536	661	585	235
	Other	773	837	1,399	1,555
	Spec Admit K-12	224	443	485	322
	Unkn	353	300	140	134
LA Valley	Freshman	13,007	13,118	11,302	10,336
	Sophomore	2,292	2,346	3,310	3,247
	AA Degree	795	904	944	813
	BA Degree	1,619	1,870	1,945	866
	Other	791	882	1,522	1,668
	Spec Admit K-12	181	316	390	400
	Unkn	246	179	107	59
LA West	Freshman	7,124	6,638	5,303	4,654
	Sophomore	859	977	1,459	1,345
	AA Degree	454	481	496	395
	BA Degree	1,213	1,224	937	380
	Other	247	329	626	654
	Spec Admit K-12	168	261	218	224
	Unkn	343	302	205	171
Lake Tahoe	Freshman	1,801	1,980	2,034	1,710
	Sophomore	85	86	3	183
	AA Degree	154	171	181	153
	BA Degree	278	388	417	221
	Other	13	20	.	48
	Spec Admit K-12	50	73	65	96
	Unkn	21	28	6	30
Laney	Freshman	6,880	7,507	7,653	7,879
	Sophomore	1,019	1,237	1,111	1,151
	AA Degree	462	455	519	507
	BA Degree	1,670	1,837	1,602	862
	Other	428	523	466	430
	Spec Admit K-12	.	80	206	255
	Unkn	9	8	24	53
Las Positas	Freshman	.	3,651	3,359	3,382
	Sophomore	.	853	988	982
	AA Degree	.	279	331	320
	BA Degree	.	562	454	342
	Other	.	465	469	447
	Spec Admit K-12	.	94	57	62
	Unkn	5,252	.	.	.
Lassen	Freshman	1,907	2,099	1,903	1,698
	Sophomore	468	298	350	275
	AA Degree	205	191	168	160
	BA Degree	319	335	288	118
	Other	197	131	154	87
	Spec Admit K-12	260	467	490	351
	Unkn	86	20	6	99
Long Beach	Freshman	16,142	14,915	13,386	13,850
	Sophomore	2,726	2,814	3,050	3,091
	AA Degree	1,662	1,621	1,619	1,604
	BA Degree	2,673	2,372	1,971	1,129
	Other	1,315	1,306	1,344	1,402
	Spec Admit K-12	727	332	754	208
	Unkn	2,674	1,553	1,160	1,026

Table 16: Fall Enrollment By Educational Level

College/Center		1990	1991	1992	1993
Los Medanos	Freshman	5,792	5,750	5,573	5,019
	Sophomore	699	798	923	869
	AA Degree	760	627	593	493
	BA Degree	1,089	853	854	407
	Other	292	321	370	399
	Spec Admit K-12	582	485	164	206
	Unkn	104	54	62	88
Marin	Freshman	.	5,397	5,624	5,084
	Sophomore	.	1,203	1,250	1,247
	AA Degree	.	1,136	1,338	1,250
	BA Degree	.	1,858	1,957	1,256
	Other	.	127	144	152
	Spec Admit K-12	.	138	209	211
	Unkn	10,366	61	55	25
Marin CED	Freshman	.	.	202	277
	AA Degree	.	.	57	51
	BA Degree	.	.	69	53
	Spec Admit K-12	.	.	3	6
	Unkn	6,563	3,072	2,289	2,803
Mendocino	Freshman	2,934	2,886	2,766	2,129
	Sophomore	381	444	425	429
	AA Degree	320	280	327	239
	BA Degree	802	836	787	280
	Other	171	214	251	222
	Spec Admit K-12	180	249	227	191
	Unkn	16	5	9	1
Merced	Freshman	4,378	5,137	4,877	4,460
	Sophomore	1,668	1,497	1,656	1,662
	AA Degree	486	515	459	399
	BA Degree	546	609	566	198
	Other	805	662	755	794
	Spec Admit K-12	204	374	151	123
	Unkn	2,938	2,759	2,745	2,885
Merritt	Freshman	4,412	4,458	4,114	3,802
	Sophomore	521	555	572	548
	AA Degree	299	317	337	289
	BA Degree	1,241	1,366	1,220	638
	Other	196	216	156	142
	Spec Admit K-12	.	92	66	48
	Unkn	2	13	27	22
Mira Costa	Freshman	10,799	9,584	9,203	9,769
	Sophomore	888	990	1,358	1,185
	AA Degree	584	588	610	540
	BA Degree	1,623	1,415	1,440	869
	Other	334	384	519	441
	Spec Admit K-12	720	611	558	180
	Unkn	.	.	.	3
Mission	Freshman	6,478	6,605	6,671	7,008
	Sophomore	802	988	1,180	1,207
	AA Degree	931	991	1,065	905
	BA Degree	2,072	2,233	1,905	700
	Other	289	409	508	467
	Spec Admit K-12	23	115	64	79
	Unkn	527	1,127	709	289

Table 16: Fall Enrollment By Educational Level

College/Center		1990	1991	1992	1993
Modesto	Freshman	8,200	9,131	9,065	9,219
	Sophomore	2,052	2,671	2,614	2,393
	AA Degree	500	585	646	687
	BA Degree	870	925	871	543
	Other	1,064	1,376	1,509	1,384
	Spec Admit K-12	223	628	738	562
	Unkn	560	950	956	693
Monterey Peninsula	Freshman	.	3,304	4,867	4,359
	Sophomore	.	766	877	904
	AA Degree	.	499	950	1,020
	BA Degree	.	989	1,921	1,514
	Other	.	472	502	383
	Spec Admit K-12	.	134	373	336
	Unkn	9,087	208	88	44
Moorpark	Freshman	.	.	7,239	6,780
	Sophomore	.	.	2,038	1,552
	AA Degree	.	.	263	1,241
	BA Degree	.	.	719	347
	Other	.	.	907	331
	Spec Admit K-12	.	.	16	147
	Unkn	11,743	11,931	878	594
Mt San Antonio	Freshman	14,938	14,467	14,240	13,822
	Sophomore	3,842	4,021	4,276	4,423
	AA Degree	1,826	1,616	1,513	1,357
	BA Degree	1,702	1,601	1,363	663
	Other	1,664	1,924	2,034	2,215
	Spec Admit K-12	278	260	273	299
	Unkn	11,184	9,191	7,450	6,731
Mt San Jacinto	Freshman	6,466	6,837	6,707	6,210
	Sophomore	490	552	766	859
	AA Degree	8	1	.	1
	BA Degree	33	.	3	3
	Other	179	187	236	303
	Spec Admit K-12	9	2	.	2
	Unkn	763	583	513	530
Napa	Freshman	.	4,788	3,732	3,471
	Sophomore	.	899	890	887
	AA Degree	.	84	79	82
	BA Degree	.	94	120	95
	Other	.	954	899	846
	Spec Admit K-12	.	210	182	211
	Unkn	8,197	762	2,031	2,013
North Orange Adult	Freshman	.	.	.	655
	Unkn	28,115	25,272	24,986	19,015
Ohlone	Freshman	5,293	5,907	5,837	5,275
	Sophomore	1,195	1,228	1,298	1,463
	AA Degree	489	641	611	496
	BA Degree	1,168	1,543	1,403	558
	Other	559	570	592	697
	Spec Admit K-12	116	113	120	152
	Unkn	143	271	233	54

Table 16: Fall Enrollment By Educational Level

College/Center		1990	1991	1992	1993
Orange Coast	Freshman	17,198	16,503	15,575	13,875
	Sophomore	3,925	4,151	4,078	4,045
	AA Degree	1,017	1,085	1,125	1,079
	BA Degree	2,194	2,598	2,273	1,132
	Other	1,531	1,655	1,683	1,791
	Spec Admit K-12	205	182	180	162
	Unkn	131	84	51	859
Oxnard	Freshman	.	.	4,161	3,342
	Sophomore	.	.	788	815
	AA Degree	.	.	141	244
	BA Degree	.	.	213	129
	Other	.	.	482	415
	Spec Admit K-12	.	.	29	253
	Unkn	6,634	6,176	764	287
Palo Verde	Freshman	590	527	1,038	1,100
	Sophomore	92	125	109	103
	AA Degree	64	103	206	248
	BA Degree	73	127	168	31
	Other	24	35	55	57
	Spec Admit K-12	277	270	249	58
	Unkn	22	26	78	262
Palomar	Freshman	10,600	12,209	13,021	12,753
	Sophomore	3,447	3,345	3,060	3,290
	AA Degree	1,144	1,360	1,320	1,127
	BA Degree	1,962	2,253	2,132	1,089
	Other	2,362	2,205	1,873	2,089
	Spec Admit K-12	1,102	1,134	864	835
	Unkn	171	101	2,959	2,734
Pasadena	Freshman	7,146	13,813	15,208	15,945
	Sophomore	2,647	3,434	3,543	4,112
	AA Degree	172	739	744	724
	BA Degree	488	1,539	1,597	856
	Other	1,406	1,710	1,984	2,255
	Spec Admit K-12	382	790	551	553
	Unkn	5,863	7,593	5,541	12
Porterville	Freshman	2,365	1,926	2,010	2,032
	Sophomore	471	394	362	396
	AA Degree	327	206	237	183
	BA Degree	470	305	332	163
	Other	163	149	161	175
	Spec Admit K-12	81	171	106	65
	Unkn	32	5	10	18
Rancho Santiago	Freshman	18,166	19,888	18,538	15,590
	Sophomore	3,065	3,417	3,646	3,778
	AA Degree	2,391	2,750	2,249	2,251
	BA Degree	4,081	4,708	3,934	2,028
	Other	2,123	2,329	2,494	2,526
	Spec Admit K-12	224	487	191	105
	Unkn	154	99	210	1,093
Rancho Santiago CED	Freshman	17,644	16,849	15,542	10,232
	Sophomore	2	.	15	26
	AA Degree	4	2	.	10
	BA Degree	.	.	.	27
	Other	.	.	4	7
	Spec Admit K-12	195	236	139	338
	Unkn	2,075	1,846	2,238	8,047

Table 16: Fall Enrollment By Educational Level

College/Center		1990	1991	1992	1993
Redwoods	Freshman	5,255	4,978	4,836	4,637
	Sophomore	1,213	1,056	1,051	1,048
	AA Degree	280	356	342	395
	BA Degree	609	694	713	346
	Other	558	454	416	366
	Spec Admit K-12	209	213	171	259
	Unkn	706	408	291	106
Rio Hondo	Freshman	8,738	8,360	7,957	11,000
	Sophomore	1,565	1,252	1,998	1,723
	AA Degree	1,069	1,004	798	818
	BA Degree	1,297	1,009	862	515
	Other	592	435	787	643
	Spec Admit K-12	154	113	133	127
	Unkn	2,790	586	693	13
Riverside	Freshman	14,594	14,669	14,757	13,712
	Sophomore	2,761	3,128	3,321	3,448
	AA Degree	761	862	903	1,213
	BA Degree	952	1,090	1,120	567
	Other	918	1,080	1,189	1,030
	Spec Admit K-12	329	536	916	855
	Unkn	421	448	456	250
SF Center	Freshman	1	3	.	4,976
	AA Degree	.	.	1	137
	BA Degree	.	.	.	442
	Spec Admit K-12	.	.	.	161
	Unkn	37,770	34,586	33,840	26,154
SF City	Freshman	15,168	14,808	15,132	14,862
	Sophomore	4,210	4,357	4,467	4,623
	AA Degree	850	985	977	963
	BA Degree	3,828	4,288	3,698	1,762
	Other	2,784	2,586	2,657	2,708
	Spec Admit K-12	183	782	841	882
	Unkn	2,748	2,349	2,518	1,874
Sacramento City	Freshman	11,136	10,698	10,760	11,392
	Sophomore	2,649	2,912	2,810	2,811
	AA Degree	2,122	1,758	1,627	1,490
	BA Degree	2,367	2,125	2,091	1,411
	Other	1,162	1,332	1,302	1,379
	Spec Admit K-12	51	43	51	133
	Unkn	71	37	78	41
Saddleback	Freshman	15,527	9,552	13,243	13,317
	Sophomore	2,478	648	3,312	2,708
	AA Degree	1,159	949	1,364	1,289
	BA Degree	3,496	2,583	4,100	2,963
	Other	844	207	1,437	1,016
	Spec Admit K-12	244	187	209	211
	Unkn	110	10,326	74	233
San Bernardino	Freshman	9,528	7,243	6,540	7,328
	Sophomore	1,201	1,526	1,777	1,553
	AA Degree	1,255	1,007	671	746
	BA Degree	789	618	563	431
	Other	300	427	711	566
	Spec Admit K-12	274	120	.	138
	Unkn	330	3,509	33	88
San Diego Adult	Unkn	34,143	35,538	34,779	35,294

Table 16: Fall Enrollment By Educational Level

College/Center		1990	1991	1992	1993
San Diego City	Freshman	7,322	7,692	8,165	7,604
	Sophomore	2,287	2,288	2,511	2,504
	AA Degree	833	781	728	671
	BA Degree	1,211	1,119	1,049	522
	Other	1,771	1,666	1,984	1,987
	Spec Admit K-12	849	1,024	5	90
	Unkn	512	535	205	161
San Diego Mesa	Freshman	12,301	11,162	11,630	10,794
	Sophomore	3,978	4,104	4,305	4,172
	AA Degree	1,080	945	911	928
	BA Degree	2,915	2,713	2,715	1,539
	Other	2,498	2,541	2,863	2,831
	Spec Admit K-12	1,160	1,225	9	881
	Unkn	238	376	145	158
San Diego Miramar	Freshman	3,652	3,947	4,299	4,053
	Sophomore	1,288	1,348	1,462	1,450
	AA Degree	525	526	661	547
	BA Degree	908	880	790	545
	Other	776	758	983	922
	Spec Admit K-12	443	574	.	35
	Unkn	222	235	148	166
San Joaquin Delta	Freshman	13,119	12,317	14,199	9,994
	Sophomore	2,778	2,894	1,014	946
	AA Degree	1,804	1,904	1,685	1,379
	BA Degree	1,161	1,038	859	369
	Other	1,037	978	149	106
	Spec Admit K-12	389	345	58	36
	Unkn	143	98	50	4,543
San Jose	Freshman	4,553	8,389	9,221	9,334
	Sophomore	87	164	269	273
	AA Degree	294	433	104	118
	BA Degree	.	.	140	118
	Other	61	117	188	188
	Spec Admit K-12	611	707	75	65
	Unkn	5,227	2,803	670	326
San Mateo	Freshman	8,288	8,268	7,123	6,759
	Sophomore	1,984	2,095	2,068	2,039
	AA Degree	1,163	1,005	936	980
	BA Degree	2,681	2,614	2,189	1,144
	Other	1,016	1,249	1,242	1,136
	Spec Admit K-12	81	186	132	166
	Unkn	91	76	46	37
Santa Barbara	Freshman	7,496	10,043	9,986	8,291
	Sophomore	1,753	69	599	1,638
	AA Degree	425	411	471	457
	BA Degree	1,101	1,112	1,176	544
	Other	694	3	4	99
	Spec Admit K-12	217	393	341	235
	Unkn	38	34	8	5
Santa Barbara CED	Unkn	11,336	11,491	11,200	10,919

Table 16: Fall Enrollment By Educational Level

College/Center		1990	1991	1992	1993
Santa Monica	Freshman	15,425	16,787	16,300	15,867
	Sophomore	2,950	3,267	3,557	3,923
	AA Degree	1,078	1,264	1,215	1,172
	BA Degree	3,369	3,384	3,262	1,516
	Other	885	1,008	1,224	1,362
	Spec Admit K-12	422	375	332	359
	Unkn				10
Santa Rosa	Freshman	17,028	16,613	17,088	15,951
	Sophomore	3,351	3,754	3,620	3,639
	AA Degree	2,011	2,033	2,000	1,837
	BA Degree	4,796	4,988	4,688	2,590
	Other	1,721	1,940	1,966	1,973
	Spec Admit K-12	468	512	515	524
	Unkn	1,228	1,376	405	4
Sequoias	Freshman	5,899	5,404	5,453	4,993
	Sophomore	1,741	1,879	1,899	1,821
	AA Degree	702	273	265	211
	BA Degree	546	481	478	201
	Other	700	1,158	1,289	1,255
	Spec Admit K-12	57	58	124	103
	Unkn	17	70	25	42
Shasta	Freshman	6,293	5,737	7,177	6,477
	Sophomore	1,105	1,101	1,240	1,399
	AA Degree	636	507	595	519
	BA Degree	751	607	1,049	480
	Other	431	497	550	622
	Spec Admit K-12	545	385	434	319
	Unkn	1,700	863	1,104	527
Sierra	Freshman	7,544	8,956	10,067	6,986
	Sophomore	1,985	2,448	1,993	1,912
	AA Degree	404	548	555	553
	BA Degree	925	1,108	1,189	655
	Other	1,069	1,396	1,161	976
	Spec Admit K-12	74	98	130	225
	Unkn	54	46	100	2,518
Siskiyou	Freshman	.	2,480	2,454	1,109
	AA Degree	.	211	231	140
	BA Degree	.	404	338	173
	Spec Admit K-12	.	144	129	69
	Unkn	2,891	115	78	1,358
Skyline	Freshman	5,690	5,636	5,323	4,879
	Sophomore	1,031	1,157	1,213	1,296
	AA Degree	697	586	656	539
	BA Degree	1,131	1,069	912	419
	Other	376	484	570	539
	Spec Admit K-12	20	84	87	116
	Unkn	74	31	24	24
Solano	Freshman	8,002	7,883	7,639	6,519
	Sophomore	1,694	1,623	1,727	1,651
	AA Degree	824	888	1,001	937
	BA Degree	1,120	1,183	1,085	473
	Other	822	867	755	772
	Spec Admit K-12	84	158	96	104
	Unkn				1



Table 16: Fall Enrollment By Educational Level

College/Center		1990	1991	1992	1993
Southwestern	Freshman	9,678	10,091	10,015	9,074
	Sophomore	2,311	2,659	2,691	2,628
	AA Degree	581	629	744	593
	BA Degree	777	975	1,010	421
	Other	920	1,143	1,301	1,363
	Spec Admit K-12	41	73	61	33
	Unkn	4	1	1,539	1,868
Taft	Freshman	712	.	765	962
	Sophomore	192	.	150	168
	AA Degree	62	.	65	89
	BA Degree	33	.	39	27
	Other	44	.	41	29
	Spec Admit K-12	22	.	39	49
	Unkn	1	1,066	3	11
Ventura	Freshman	.	.	6,990	6,342
	Sophomore	.	.	1,777	1,576
	AA Degree	.	.	274	701
	BA Degree	.	.	665	486
	Other	.	.	1,167	745
	Spec Admit K-12	.	.	22	238
	Unkn	12,513	11,841	1,092	386
Victor Valley	Freshman	5,229	7,113	6,746	6,515
	Sophomore	651	845	893	1,026
	AA Degree	432	497	481	436
	BA Degree	283	352	323	182
	Other	193	220	222	254
	Spec Admit K-12	600	568	492	534
	Unkn	1,290	.	.	.
Vista	Freshman	2,221	2,414	2,170	2,049
	Sophomore	125	128	119	113
	AA Degree	215	219	178	172
	BA Degree	2,016	2,029	1,694	640
	Other	13	15	18	10
	Spec Admit K-12	.	36	86	200
	Unkn	171	18	7	8
West Hills	Freshman	1,317	2,451	2,437	2,140
	Sophomore	392	25	9	19
	AA Degree	35	.	.	1
	Other	217	219	246	386
	Spec Admit K-12	431	519	276	290
	Unkn	11	10	40	101
West Valley	Freshman	8,444	8,134	7,772	7,248
	Sophomore	1,801	1,948	1,915	2,034
	AA Degree	767	746	674	615
	BA Degree	2,211	2,151	1,852	786
	Other	826	922	949	967
	Spec Admit K-12	263	193	90	173
	Unkn	158	1,643	1,475	947
Yuba	Freshman	6,273	5,761	6,822	5,863
	Sophomore	1,420	1,624	1,419	1,320
	AA Degree	862	816	903	790
	BA Degree	816	671	745	293
	Other	527	553	523	444
	Spec Admit K-12	414	306	416	226
	Unkn	857	201	105	81

Table 16: Fall Enrollment By Educational Level

College/Center	1990	1991	1992	1993
<b>Estimated Statewide Freshman</b>	<b>753,617</b>	<b>794,904</b>	<b>830,305</b>	<b>773,746</b>
<b>Total</b>	<b>144,066</b>	<b>163,274</b>	<b>182,197</b>	<b>182,997</b>
<b>Sophomore</b>	<b>60,735</b>	<b>65,252</b>	<b>66,992</b>	<b>65,416</b>
<b>AA Degree</b>	<b>116,950</b>	<b>125,277</b>	<b>124,671</b>	<b>65,798</b>
<b>BA Degree</b>	<b>70,931</b>	<b>82,000</b>	<b>90,167</b>	<b>90,393</b>
<b>Other</b>	<b>27,080</b>	<b>28,880</b>	<b>25,315</b>	<b>25,206</b>
<b>Spec Admit K-12</b>	<b>332,002</b>	<b>255,674</b>	<b>180,746</b>	<b>173,009</b>
<b>Unkn</b>				

## Appendix A Definition of Variables Used

### LOAD

- Full-Time: Students taking 12 or more units.
- Part-Time: Students taking less than 12 units.
- NonCredit: Students taking all non-credit courses.

### ENROLLMENT STATUS

- First-Time: A student enrolled in any college for the first time after High School and exclusive of summer term enrollment.
- Transfer: A student enrolled at the reporting college for the first time and who transferred from another institution of higher education.
- Ret. Transfer: A student who has previously attended the reporting college, transferred to another college, and has now returned to the reporting college.
- Returning: A student enrolled at the reporting college after an absence of one or more regular sessions without interim attendance at another college.
- Continuing: A student who is enrolled in the current session and who was enrolled in the previous regular session.

### EDUCATIONAL LEVEL

- Freshman: Student with less than 30 cumulative units (45 for quarter system colleges).
- Sophomore: Students with cumulative units between 30 and 59.99 units (45 and 89.99 units for quarter system colleges).
- AA: Received an Associate Degree.
- BA: Received a Bachelor degree or higher.
- Special Admit: Student currently enrolled in K-12.